

An abstract artwork featuring dark, glossy, angular shapes that resemble liquid or wax, set against a vibrant red background. The shapes are layered and overlapping, creating a sense of depth and movement. The overall composition is dynamic and modern.

EST. 1782
sworders
FINE ART AUCTIONEERS

20th CENTURY
DESIGN

Tuesday 8 October 2019 at 10am





W

C

2



Adam Gabriel Wilkinson
Areena Ang
Fabian Hird
Eliza Plunkett
Jake Walker
Uggi Adalsteins
Larry Bush
Scarlet Griffiths
Okikioluwa Akinfe
Niamh Evans
Gulliver Whitby

Adam Gabriel Wilkinson
Areena Ang
Fabian Hird
Eliza Plunkett
Jake Walker
Uggi Adalsteins
Larry Bush
Scarlet Griffiths
Okikioluwa Akinfe
Niamh Evans
Gulliver Whitby

Private View
Thursday
17th October
18:00 - 20:30

Sworders London
london@sworder.co.uk

WC2N 4EZ
15 Cecil Court

Public Opening
18th - 24th October
Closed Sunday
10:30 - 17:00

20th CENTURY DESIGN

at the Stansted Mountfitchet
Auction Rooms

Tuesday 8 October 2019 at 10am



ORDER OF SALE

Lots 1 - 89 Arts & Crafts and
Art Nouveau Furniture
and Objects

Lots 90 - 307 Art Deco Furniture,
Objects and Lighting

10-minute break

Lots 308 - 637 Modern Furniture and
Design

VIEWING TIMES

| | |
|-------------------|------------|
| Friday 4 October | 9am - 5pm |
| Sunday 6 October | 10am - 1pm |
| Monday 7 October | 9am - 5pm |
| Tuesday 8 October | From 9am |

ONLINE BIDDING

Bid live at www.sworder.co.uk
(3% surcharge)

FURTHER INFORMATION

Contact: **John Black**

Telephone: 01279 817778

Email: auctions@sworder.co.uk

To obtain more images and
condition reports for lots in
this catalogue, please visit our
website www.sworder.co.uk



REMOVAL OF LOTS

All lots should be removed by **5pm on Friday
18 October.**

Furniture lots remaining after this date will be
removed to: Perry Removals, Chapel End, Broxted,
Essex CM6 2BW.

Removal will be at a cost of £20 per lot and storage
will be charged at £2 per lot, per day.

ARTS & CRAFTS AND ART NOUVEAU FURNITURE AND OBJECTS

1-89



1



2



Lot 1

A Linthorpe Pottery bottle vase, c.1882-1883, of tapering form with a dark green glaze incised with flower heads, each trailing a turquoise glaze, and incised with notches to the edges, *chipped, impressed 'Linthorpe', 'Chr Dresser' and 'HT' for Henry Tooth*, 22cm high
£150 - 250

Lot 2

A green pottery vase, attributed to Brannam, impressed with stylised lobsters, *impressed 'Made for Liberty & Co.'*, 30.5cm high, and a Bretby jardinière, with a brown and green-streaked glaze, *stamped 'Bretby'*, 11.5cm high (2)
£100 - 150



3

Lot 3

Two William De Morgan tiles, early and late Fulham period, 1888-1907, each with Persian-inspired designs, *impressed marks*, 15 x 15cm and 15 x 15.5cm (2)
£500 - 700

Lot 4

A Mintons' secessionist jug, tubelined with stylised decoration, *printed mark 'Mintons Ltd., no.5'*, 30.5cm high
£150 - 250



4



5



Lot 5

A Cantagalli Iznik-style pottery teapot, of tapering form with a high handle, *cockerel mark*, 21cm high, and a yellow lustre bowl, *cockerel mark*, 11cm diameter (3)
£200 - 300

Lot 6

A green-glazed pottery vase, dated 1890, incised with grotesques and a putto breaking his harp, below a flared rim with Greek key banding, *incised 'Fatto di Londia in Fabrica De Morgan & Co Agosto 1890', chips to rim*, 19cm high
£150 - 200

Lot 7

Two pottery encaustic tiles, attributed to Achille Boulenger (1826-1901), one decorated with a deer, the other with two doves holding a chalice, *the dove tile stamped to the top edge 'Boulenger'*, 14cm square (2)
£150 - 250

Lot 8

A Della Robbia pottery Madonna and Child tondo, centred with a blue ground with a moulded egg and dart and floral frame, *chipped, unmarked*, 47cm diameter
£300 - 500



8



6



7



Henry Doulton was synonymous with high quality, large scale production of non-porous stoneware drainage pipes. These were the key component of the sewage works which helped modernise Victorian London and saved millions of lives. He was approached by the Lambeth School of Art who persuaded him to establish an Art Pottery in 1862.

Chief amongst the talented decorators were the Barlow family of Bishop's Stortford, Hertfordshire, four of whom worked for Doulton. The best known and perhaps most collected was Hannah Barlow (1851-1961) born in Little Hadham. Her sister, Florence, who also worked for Doulton, was born in Bishop's Stortford.



10

Lot 9

A Doulton Lambeth biscuit barrel, dated 1878, by Florence Barlow, incised with a band of birds amongst rushes, on a silver-plated stand with a hinged cover, impressed marks and incised '907' with artist's monogram, 20.5cm high
£150 - 200



11

Lot 10

A Doulton Lambeth stoneware jardinière, 1881, decorated by Hannah Barlow, with an incised band of grazing sheep within coloured moulded borders, stamped and inscribed marks, 17.5cm high
£400 - 600

Lot 14

A Doulton Lambeth stoneware ewer, dated 1874, by George Tinworth, with incised scrolling bands and stylised leaf motifs, impressed with artist's monogram to the body, lacking metal cover, 22.5cm high
£250 - 350

Lot 15

A Doulton Lambeth stoneware vase, by Mark V Marshall, with scrolled beadwork and flower heads, impressed marks and incised '197 M.V.M.' and 'EP', 28cm high
£120 - 150



9



12



13



14

Lot 11

Two Doulton Lambeth stoneware ewers, 1880 and 1882, both by Eliza Simmance, with incised details on a blue or brown ground, impressed marks and incised artist's monograms, one restored, 19 and 19.5cm high (2)
£400 - 600

Lot 16

A Doulton Lambeth stoneware jug, dated 1877, incised with scrollwork on a blue ground, impressed marks and artist's monogram, 17.8cm high
£100 - 150

Lot 17

A Doulton Lambeth stoneware twin-handled vase, dated 1879, by Eliza Simmance, on a buff ground incised with strapwork leaves, impressed marks and incised '520' and 'E Simmance', 28.5cm high
£300 - 500

Lot 12

A Doulton Lambeth stoneware bowl, dated 1883, by Francis E Lee, incised with scrolling decoration, impressed marks and with artist's monogram, 21cm diameter
£100 - 150

Lot 13

A stoneware biscuit barrel, with a scrolled band and borders, with a plated swing handle, mount and cover, stamped 'D 1880' and incised 'B20179' and 'W', 21cm high
£100 - 150



15



16



17

Lot 18

A Doulton Lambeth ewer, dated 1873, by Arthur B Barlow, on a buff ground incised with leaves, in a blue glaze, *impressed marks and incised with artist's monogram, restored rim*, 23cm high, and a Doulton Lambeth ewer, dated 1875, by Frank A Butcher, with jewelled lozenge panels and leaf prunts, *impressed and incised artist monogram, restored*, 19.5cm high (2)
£150 - 250



18



19

Lot 19

A large Doulton Lambeth 'Art Union of London' stoneware ewer, attributed to Mark V Marshall, incised and tubelined with rambling wild roses and birds, *impressed marks '8157' and 'Art Union of London'*, 48cm high
£400 - 600



20

Lot 20

A monumental Doulton Lambeth stoneware vase, dated 1887, by Florence Barlow, with a shield-shaped panel with two pâte-sur-pâte pheasants, a field mouse and a butterfly on a green ground, incised with bold scrolling leaf designs, *impressed marks, inscribed with the artist's monogram on the panel, cracked and chipped*, 62cm high
£800 - 1,200

Lot 21

A monumental Doulton Lambeth stoneware vase, dated 1887, by Florence Barlow, with pâte-sur-pâte panels of budgerigars, on a buff tooled ground, incised with bold stylised anthemion leaves, *impressed marks and with incised artist's monogram to one panel, restored to rim*, 62.5cm high
£1,000 - 1,500



21



22



23

Lot 22

A pair of Royal Doulton stoneware vases, by Frank Butler, of tulip form with stylised designs in green, blue and brown, *impressed marks, incised 'FHB 209', impressed 'g'*, 27.5cm high (2)
£200 - 300

Lot 23

A Royal Doulton Lambeth stoneware soap dish or bibelot, by Henry Simeon, modelled with a kingfisher perched on the side, *impressed marks 'X 8946/13159'*, 15cm high
£100 - 150



24

Lot 24

A Moorcroft 'Moonlit Blue' bowl, with 'W Moorcroft' in green, impressed marks, 24.5cm diameter
£400 - 600

Lot 25

A Moorcroft 'Moonlit Blue' vase, with a floral cylindrical flared body and fixed on a pewter plinth, stamped 'Made in England, Tudric Moorcroft 01310', 30cm high
£1,000 - 1,500

Lot 26

A Tudric pewter twin-handled bowl, designed by David Veasey for Liberty & Co, with a band of stylised trees and with the verse 'And the mask of the rose is blown and the woodbine spices are wafted abroad', raised on a low foot, stamped 'TUDRIC 011', 31cm diameter
£200 - 300

Lot 27

A WMF pewter dish, modelled as a lady looking into a lily pond, cast '229' and impressed marks, 27cm wide
£100 - 150

Lot 28

A WMF pewter wall plaque, depicting a courting couple beneath fruiting vines, with a ring for suspension, numbered '366A', 23.5cm wide
35cm high
£100 - 150

Lot 29

Emmanuel Villanis (French, 1858-1914), 'Bohemienne', a bronze bust, 28cm high
£250 - 350

Lot 30

An Art Nouveau silvered bronze vase, naturalistically cast with flowers and leaves, signed 'A. Rose' on a low circular foot, 21cm high
£300 - 500



26



25



27



28



29



30



31



32

Lot 31

After Affortunato Gory (French-Italian, 1895-1925), a gilt bronze and ivory figure of a boy wearing a cloak, on a simulated bark plinth, *signed 'Gory'*, 21cm high
£300 - 500

Lot 32

A gilt bronze and ivory figure of a girl, wearing a lamb's head muff, *indistinctly signed 'Tremo'*, on a marble plinth, 20.5cm high
£300 - 500

Lot 33

A WMF silver-plated wall charger, centred with a girl in profile, bordered with stylised flowers, *cast '237' to the reverse*, 50cm diameter
£400 - 600

Lot 34

After Julien Causse, a bronze figure of a maiden, signed, on a marble plinth, 55cm high
£200 - 300



33



34

Lot 35

Jules Cheret (1836-1932)
ALCAZAR D'ÉTÉ LOUISE
BALTHY
Lithograph in colours, 1893,
printed by Chaix, Paris, backed
on linen
124.5 x 88cm
£500 - 700

Lot 36

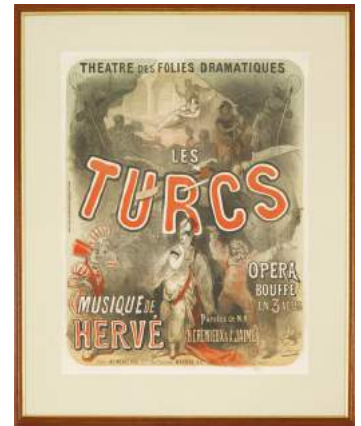
Jules Cheret (1836-1932)
LES TURCS, THÉÂTRE DES
FOLIES DRAMATIQUES
Lithograph in colours, 1869,
printed by Cheret, Paris, linen
backed
image 69 x 52.5cm
£200 - 300

Lot 37

'Alcazar D'Hiver, 1876',
a lithographic printed poster,
designed by Emile Levy,
60.5 x 38cm, mounted and
framed
£150 - 200



35



36



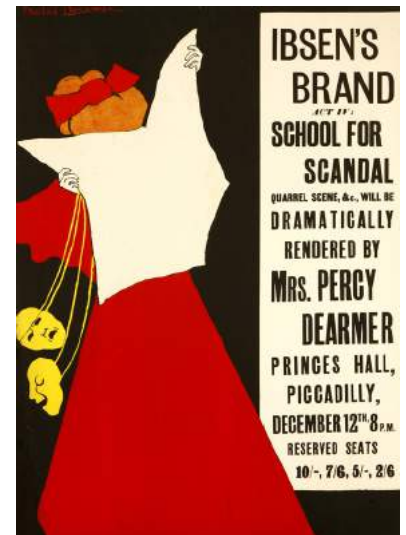
37



38



39



40

Lot 38

Jules Cheret (1836-1932)
VIVIANE, EDEN - THEATRE
Lithograph in colours, 1896, printed
by Chaix, Paris
sheet size 78 x 58cm
£400 - 600

Not examined out of the frame.

Lot 39

Jules Cheret (1836-1932)
A SMILING CLOWN
Signed I.I., pastel on linen
59.5 x 45.5cm
£800 - 1,200

Lot 40

Mabel Dearmer (1872-1915),
a colour lithographic poster for Ibsen's
'Brand' and Sheridan's 'School for
Scandal', at Prince's Hall, Piccadilly,
printed by Waterlow & Sons, 1895,
74 x 49cm
£250 - 350



41



42

Lot 41

An Arts and Crafts wrought iron standard lamp, attributed to the Birmingham Guild, with an extendable shaft, three lights, 184cm high
£250 - 350

Lot 42

A Pilkington Lancastrian orange artichoke vase, with a moulded body, impressed marks and '3362', 16cm high
£100 - 150



43

Lot 43

An Arts and Crafts silver bowl, by William Mammatt & Son, Sheffield 1905, with three scrolled handles raised on a low foot, 27cm diameter, 23ozt
£200 - 300

Lot 44

An Arts and Crafts silver vase, by G L Connell Ltd., Birmingham 1912, with applied rosettes and motto 'There's Gladness in Remembrance', raised on a rope twist rim, 18cm high, 4.2ozt approximately
£120 - 180



44



45

Lot 45

An Arts and Crafts brass charger, early 20th century, embossed with the goddess Abundantia to the central panel, holding baskets overflowing with produce, within a scrollwork border, 48cm diameter
£150 - 250



46

Lot 46

*Sydney March (1875-1968), a pair of bronze busts of Edward VII and Queen Alexandra, cast by Elkington & Co., inscribed 'Elkington & Co., London, Sydney March, 1901', and 'Elkington & Co., London 1901 Sydney March Sc.', 40.5 and 48cm high (2)
£1,200 - 1,500

Lot 47

A Thebes ebonised stool, designed by Leonard Wyburd, probably retailed by Liberty & Co. Ltd., with plain spindles, replaced leather seat, 45cm wide, 44cm deep, 37cm high
£500 - 800



47

Lot 48

A Thebes mahogany stool,
designed by Leonard Wyburd, manufactured by
William Birch and retailed by Liberty Co. Ltd., with
a light leather seat,
43cm wide
43cm deep
37cm high
£500 - 800



48



49

Lot 49

An Arts and Crafts Thebes chair,
with turned supports and a rush seat
£150 - 200

Lot 50

An Arts and Crafts oak
dining chair,
designed by William Birch,
with a string seat,
two planters, and
a three-tier cake stand (4)
£150 - 200



50

Lot 51

A Winfield rocking chair,
with a slung black vinyl seat,
with headrest and arms
£300 - 500



51



52



53

Lot 52

A set of six oak
dining chairs,
by Bruce Talbot,
c.1890, each with
a spindle turned
back, an over-stuffed
upholstered seat and
turned legs,
44cm wide
42cm deep
80cm high (6)
£200 - 400

Lot 53

A pair of
ebonised side
chairs,
after a design
by E W Godwin,
each with fabric
Morris print
seats (2)
£150 - 200

Lot 54

An Aesthetic
ebonised settee,
with turned spindle
galleries, *upholstery
worn*,
185cm wide
£250 - 350



54



55

Lot 55

An Aesthetic ebonised and gilt side table, 107cm wide 55cm deep 73.5cm high, a wall shelf, centred with a bevelled mirror, flanked with painted panels, 61cm wide 71cm high, and an armchair (3)
£150 - 250

Lot 56

An Aesthetic ebonised and gilt side cabinet, with a spindle gallery and shelf over a central drawer and glass cupboard, flanked with open shelves and a pot board below, 138cm wide 47cm deep 160cm high
£250 - 350

Lot 57

An Arts and Crafts oak student's desk, with a pierced three-quarter gallery, a leaded glass cupboard over a slope front, a single drawer and well below, 68cm wide 38cm deep 136.5cm high
£150 - 200



56

Lot 58

A pair of Arts and Crafts oak armchairs, with upholstered backs, seats and arms, 70cm wide 80cm deep 115cm high (2)
£300 - 500

Lot 59

An Art Nouveau mantel clock, the cast metal case modelled as a maiden with flowing hair holding the lozenge-shaped top, with pointed Arabic dial and a marble plinth, 42.5cm high
£150 - 200



57



59

Lot 60

A Russian World War One poster, designed by Sergei Vinogradov (1869-1938), a colour lithographic poster, translates as 'Russian soldiers in captivity want help from us. 31 October - 1 November 1915', with fold lines and some losses, 57 x 42cm
£600 - 900



58



60

Lot 61

A walnut drinks compendium, probably Austro-Hungarian, the central section with a pair of domed doors enclosing a decanter compartment, flanked by two oval pivoting surfaces enclosing twin compartments set with six glass apertures, raised on splayed supports, with a pair of cut glass decanters and labels, 67cm wide 45cm deep 92cm high £300 - 500



61

Lot 62

A Viennese mahogany sideboard, of breakfront form, with a raised three-quarter gallery and a marble top over four drawers, the centre with a well flanked with cupboards, each with an inlaid panel and enclosing three oak drawers, labelled 'Ludwig Schmitt k.u.k. Hof-Kunsttischler, Wien', 167cm wide 59.5cm deep 96cm high £700 - 900



62



63

Lot 63

An Arts and Crafts four-piece silver part-dressing table set, by Bernard Instone, Birmingham, 1927, comprising: two clothes brushes and two hair brushes, the mirror missing, each piece with an enamelled panel, within applied rope twist borders, the fitted case with a label for 'EP Mallory, 1 Bridge Street, Bath', brushes 23.5cm long case 34.5cm wide (4) £200 - 400

Lot 64

An Arts and Crafts oak stick stand, with fret cut sides, four divisions, with a metal liner, 56cm wide 25cm deep 73.5cm high £120 - 150



64



65

Lot 65

An Henry Ryland crystoleum, of a maiden with lilies, 37 x 30cm, framed £100 - 150



66



68



67

Lot 66
An oak and copper casket, of plain form, with beaten copper panels, and iron side handles, *stamped 'R1976/156'*, 64cm wide 45cm deep 41cm high
£200 - 300

Lot 67
A secessionist dresser, in two parts with shelves, flanked with brass-framed, glazed cupboards, 160cm wide 55cm deep 232.5cm high
£250 - 350

Lot 68
A Liberty chair, with turned supports and a fretwork panelled back, *reupholstered*, 56cm wide
£200 - 300

Lot 69
An oak bookcase, with a wide cornice over an open shelf, a glazed cupboard below with decorative copper hinges, 170cm wide 40cm deep 193cm high
£250 - 350

Lot 70
An oak lounge armchair, with a back adjustable to two positions, a pull-out footstool and a drawer for the cushion, 61cm wide 160cm deep seat approximately 38cm high
£200 - 400



70



69



71

Lot 71

An oak mirrored back cabinet, the raised top centred with a leaded glass cupboard, over a bevelled mirror plate, the lower section with canted corners, with two short drawers and a cupboard below, 152.5cm wide 57cm deep 185cm high £250 - 350



74

Lot 72

A pair of brass pricket candlesticks, c.1880, 31cm high (2) £150 - 200



72

Lot 73

An oak dresser, centred with two shelves flanked with two leaded glass panelled cupboards, over two short drawers and a cupboard, 152.5cm wide 44cm deep 182cm high £200 - 400



75

Lot 74

An oak dressing table, the rectangular mirror plate flanked with inlaid and pierced panels, with a central shelf and drawers, over two short and one long drawer, with copper hoop handles, 117.5cm wide 58.5cm deep 157cm high £150 - 250



73

Lot 75

A walnut overmantel mirror, surmounted with a slatted panel, over a bevelled mirror plate, 107.5cm wide 94.5cm high £100 - 150



76

Lot 76

An Arts and Crafts inlaid oak bureau, with a pierced gallery with a shelf, over a slope front and drawer, above a further shelf, 86cm wide 36cm deep 147cm high £300 - 500

Lot 77

An Arts and Crafts inlaid oak, mirrored back sideboard, by Shapland & Petter, profusely inlaid with a stylised design, centred with a bevelled mirror, open spindles to the sides, raised on a lower section with a drawer and two cupboards, with copper and brass handles and hinges, stamped 'S&PB' to lock plate, 137cm wide 58cm deep 193cm high £800 - 1,200



77

Lot 78

An oak bench, in the manner of Arthur Simpson, with a plain top and carved edge on strut supports, 151.5cm wide 29.5cm deep 45.5cm high £200 - 300



78



79

Lot 79

A stained stool, with a spindle gallery 57.5cm wide, a mirror, with an embossed panel, above a bevelled mirror, 29cm wide 52cm high, and a peg box, carved with leaves, initialled to the handle, 22cm wide (3) £120 - 150

Lot 80

An Arts and Crafts oak dresser, in the manner of Shapland & Petter, with bar glazed doors over two drawers and a cupboard, 162cm wide 62cm deep 185cm high £150 - 250

Lot 81

A set of four Thonet bentwood chairs, comprising two singles and two armchairs, each with caned seats (4) £300 - 500



80



81



82



83



84



85

Lot 82

An oak single bedhead and footboard, by Sidney Barnsley, each with arched chamfered frames, with side bars, 106cm wide (4)
£1,000 - 1,500

Provenance:

From the collection of Arthur Mitchell of the brewery firm, Mitchell & Butler. Mitchell lived in Cheltenham at Glenfall House and other works he commissioned are now in the Cheltenham Wilson Art Gallery.



86



87

Lot 83

A set of four Robert 'Mouseman' Thompson oak napkin rings, of octagonal form, carved with the signature mouse, 5cm wide
£100 - 150

Lot 86

An ash spindle back rocking chair, by Neville Neal, after a design by Ernest Gimson, with a rush seat, stamped
£250 - 350



88

Lot 84

A Robert 'Mouseman' Thompson oak stool, the kidney-shaped seat, with the signature mouse, on three legs, 36.5cm wide, 29cm deep, 45cm high
£200 - 400

Lot 87

An Heal's oak reformatory table, with a four-plank plinth top, raised on tapering columns united with a central stretcher, 183cm wide, 76cm deep, 76cm high
£250 - 350

Lot 85

A Robert 'Mouseman' Thompson oak joint stool, with a rectangular seat, 40.5cm wide, 27.5cm deep, 38.5cm high
£300 - 500

Lot 88

An Heal's oak Letchworth armchair, with a string seat, and four others, three with string seats, one rushed (5)
£250 - 350



89

Lot 89

Charles Rennie Mackintosh (1868-1928),

a green painted Windsor chair, designed for Miss Cranston's Dutch Kitchen, Argyle Tearooms, Glasgow, 1906, with a later inscribed top rail 'Secretary's OURS Chair',

35.5cm wide

73cm high

£5,000 - 7,000

Literature: Roger Billcliffe, 'Charles Rennie Mackintosh, The Complete Furniture, Furniture Drawings and Interior Designs', 1st Edition, Guildford, 1979, illustrated p.191.

This chair was donated to the Glasgow 'Ours' Club by the secretary, as was their tradition, and the top rail is carved 'Secretary's OURS chair' accordingly.

'From a communication received from Mr Charles Clarke, 8 Bankside Avenue, Johnstone, it appears that, meeting Mr William Sloan in Glasgow towards the end of 1871, he suggested the desirability of forming a Club or Society for the study of philology or cognate subjects. These gentlemen being schoolmasters, the suggestion was met with hearty approval from their scholastic friends and thus the Club was instituted in 1871 with Mr William Sloan as President and Mr Clarke as Secretary.

The name they gave themselves at first was 'The Philological Society of Glasgow', but even in the first session, this was found too cumbrous and perhaps somewhat pretentious, and on the suggestion of Mr Clarke the name was changed to that we all love, viz: 'OURS'.'

Lyon and Turnbull, Decorative Arts, 17 April 2002, lot 428.

ART DECO FURNITURE, OBJECTS AND LIGHTING

90-307

Lot 90

An Art Deco chrome and phenolic Bakelite desk clock, the square dial stamped 'Foreign', 14.5cm wide 15.5cm high
£150 - 250

Lot 91

An Amsterdam School bronze standard lamp, c. 1920-25, raised on a triform stand, with further applied shafts
£600 - 800

Lot 92

'Sport at the Bauhaus / Jump over the Bauhaus', after T Lux Feininger, an exhibition poster, framed, 84.5 x 60cm
£100 - 150



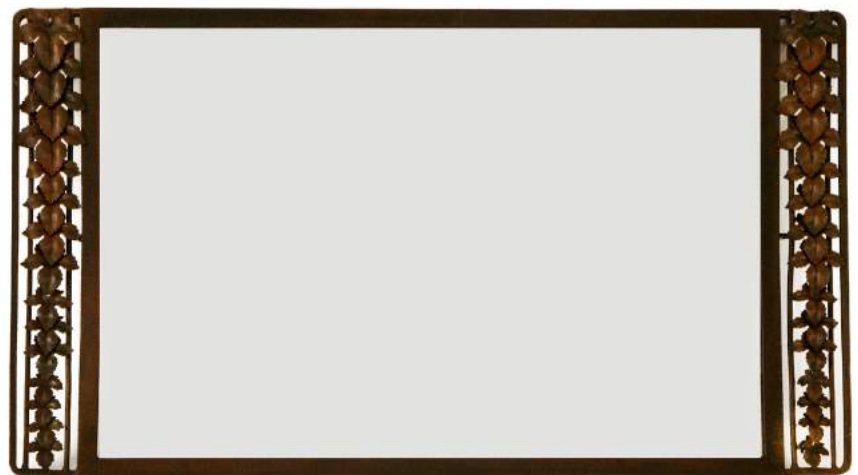
90



91



92



93



94



Lot 93

A French iron mirror, with a bevelled central plate, flanked with maple leaf panels, 110cm wide 63.5cm high
£250 - 350

Lot 94

A pair of mirrored consoles, designed by Jacques Adnet, each with a marble top, supported on a silvered frame, with mirrored vertical and curved panels, 75cm wide 28.5cm deep 100.5cm high (2)
£600 - 800



95

Lot 95

An Art Deco walnut dining suite, comprising:
a draw-leaf dining table, raised on curved supports, 120cm long, 182cm extended 92cm wide 76cm high,
a set of four chairs, each with curved backs and drop-in seats, and
a sideboard, with a pair of cupboards enclosing a cutlery drawer, on curved supports, loose, 136cm wide 48cm deep 98cm high (6)
£400 - 600

Lot 96

An Art Deco walnut three-tier side table, with a veneered top, raised on curved supports, 81.5cm wide 37cm deep 72.5cm high
£200 - 300



96



97



99

Lot 97

An Art Deco-style patinated spelter table lamp, after a design by Max Le Verrier, lacking a shade, inscribed 'Le Verrier', on a marble plinth, 32.5cm high
£100 - 150

Lot 98

A French oak lounge suite, by R Bouillet, Vincennes, comprising a long bench and three armchairs, each piece with a solid back and seat, ring turned supports, *labelled*, bench 243cm wide 65cm deep 91cm high, armchair 74cm wide 65cm deep 90cm high (4)
£1,000 - 1,500

Lot 99

Gyula Maugsch (Hungarian, 1882-1946), a bronze nude, inscribed 'Maugsch', on a marble plinth, 38cm high
£150 - 200



98

Lot 100

A French Laurel and Hardy poster, 'Sous Les Verrous' (Pardon Us), 1931, a colour lithographic poster printed 'Imprimerie Affiches et Publicite, 11 rue Castex, Paris', linen backed, 160cm x 121cm
126cm x 166cm overall
£1,500 - 2,000



100

Lot 101

An Art Deco burr walnut dining suite, comprising:
a table,
with a rectangular top, canted corners, raised on plinth supports,
188cm long
96cm wide
71cm high,
six cloud back dining chairs,
with cream leather seats, tapering supports and claw feet, and
a burr walnut sideboard,
with a serpentine front and a central cupboard, flanked with drawers and further cupboards, with silvered handles,
153cm wide
51cm deep
107.5cm high (8)
£2,000 - 3,000



101



102



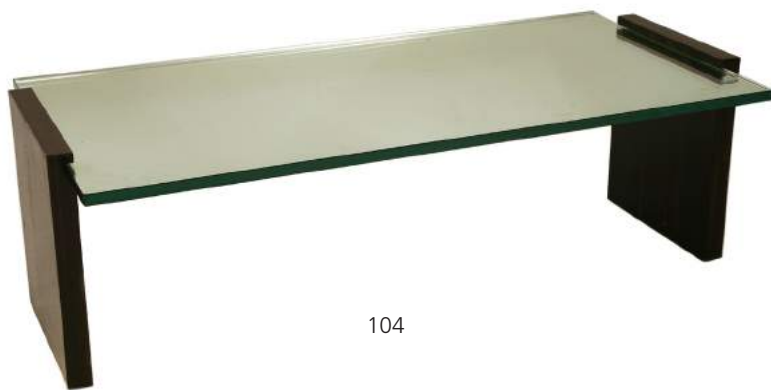
103

Lot 102

An Art Deco burr maple sideboard, with a bow front raised central section, opening to reveal a pink-tinted glass-lined interior, flanked with cupboards on a 'U' shaped stand, 174cm wide 58cm deep 111.5cm high £400 - 600

Lot 103

A French silvered standard lamp, with three lights, on a ribbed dome stand, lacking shade, 73.5cm high £200 - 400



104



105

Lot 104

A calamander mirrored glass coffee table, designed by Jacques Adnet, 124cm wide 60cm deep 40.5cm high £800 - 1,200

Lot 105

A Dunhill comprehensive games compendium, comprising a chess set, dominoes, draughts, sets of playing cards, miniature roulette wheel and board, various counters, chips and pens, 61cm wide 38cm deep 18cm high £300 - 500

Lot 106

An Art Deco walnut Strohmenger baby grand piano, gilt labelled 'no.19902', cast 'registration no. 777260', 136cm wide 124cm deep 94cm high, and a matched duet stool, 93cm wide (2) £500 - 700



106



107



108

Lot 107

A pair of Eileen Gray-style adjustable lamp tables, after the E1027 design, each with a glass adjustable top, 32cm diameter (2)
£250 - 350

Lot 108

An Art Deco Jaeger-LeCoultre 'Luxhora Duoface' electric chrome table clock, 1930s, with a spherical shade with nine different positions, fitted with a light and a double-faced clock with a printed rectangular dial, on an hexagonal plinth, 28cm high
£800 - 1,200

Lot 109

A Bulle electric mantel clock, veined onyx with an octagonal dial, inscribed 'Bulle Clock', and numbered '27553', 16.5cm wide, 25.5cm high
£300 - 500



109



110

Lot 110

An Art Deco-style four-fold dressing screen, the panels formed of varnished fabric in geometric, floral and curvilinear design within a black border, each panel 60.5cm wide x 183.5cm high
£200 - 300

Lot 111

An Heal's teak garden table and four chairs, designed by Sir Ambrose Heal in 1923, 90.5cm square
69.5cm high (5)
£250 - 350



111

Lot 112

A bistro table, with a stained rectangular top, cast 'Fischel' to the stand, 80cm wide
50cm deep
75cm high
£200 - 300



112

Lot 113

An Art Deco mahogany mirror, with a dogtooth inlaid frame with ivory and ebony details, and a bevelled plate, 88 x 57cm
£100 - 200



113



115

Lot 114

An Art Deco oak side table,
with stepped supports,
49cm wide
63cm high,
together with a similar low table,
45cm wide
51cm high (2)
£150 - 250



114

Lot 115

*Roger Broders (French, 1883-1953)
FOUR ART DECO COSTUME STUDIES
Pen and ink
each 19 x 10.5cm, mounted and framed (4)
£400 - 600



116

Lot 116

An Art Deco walnut side table,
the circular top over ebonised supports, united by an
undertier,
60cm diameter
45.5cm high
£120 - 150

Lot 117

An Asprey onyx desk stand,
silver-mounted by George Betjeman & Sons, London, 1922,
inlaid with tesserae banding,
19cm wide
14cm deep
8.5cm high
£200 - 300



117



118



119



120



121



122



123



124

Lot 118

A Clarice Cliff vase,
shape no. 362, with two bands of diamond details,
printed 'Bizarre' mark,
19.5cm high
£150 - 200

Lot 119

A Clarice Cliff 'Canterbury Bells' single-handed
Isis vase,
printed 'Fantasque Bizarre' mark,
28.5cm high
£350 - 450

Lot 120

A pair of Clarice Cliff cottage bookends,
printed 'Wilkinson Ltd., England, Clarice Cliff',
14cm high (2)
£200 - 300

Lot 121

A Clarice Cliff 'Patina Country' Isis vase,
with a faint printed 'Bizarre' mark,
24.5cm high
£150 - 250

Lot 122

A Clarice Cliff 'Delicia Citrus' coronet jug,
printed 'Bizarre' mark,
17.7cm high
£100 - 150

Lot 123

A Clarice Cliff 'Double V' vase,
shape no. 37, the hexagonal baluster body painted
with arched panels, printed 'Bizarre' mark,
37.5cm high
£200 - 300

Lot 124

A Clarice Cliff 'Berries' café au lait vase,
shape no. 362, printed 'Bizarre' mark,
20.5cm high
£200 - 300



125



126

Lot 125

A Clarice Cliff 'Gibraltar' Athens jug,
printed 'Fantasque Bizarre' mark,
18.5cm high
£150 - 200

Lot 126

A Clarice Cliff 'Red Trees and House'
Viking boat centrepiece,
printed 'Bizarre Fantasque' mark,
40.5cm long
25cm high
£300 - 500



127



128



129

Lot 127

A Clarice Cliff 'Orange Trees and House' vase,
shape no. 386, printed 'Fantasque'
mark,
30.5cm high
£600 - 800

Lot 129

A Clarice Cliff 'Red Trees and House' Isis vase,
printed 'Fantasque' mark,
24.5cm high
£300 - 500

Lot 128

A Clarice Cliff 'Orange Trees and House' Athens jug,
printed 'Fantasque Bizarre' mark,
15.5cm high
£150 - 200

Lot 130

A Clarice Cliff 'United Services' three-piece cruet set,
two printed with 'Bizarre' marks
and the guardsman 'Newport Pottery England',
10cm high (3)
£200 - 300



130



131

Lot 131
A Clarice Cliff 'Chintz' vase,
shape no. 120, printed
'Fantasque Bizarre' mark,
26.5cm high
£250 - 350

Lot 132
A Clarice Cliff 'Rudyard'
single-handled Lotus vase,
printed 'Bizarre' mark,
29cm high
£400 - 600

Lot 133
A Clarice Cliff 'Secrets' single-
handled Lotus vase,
printed 'Bizarre' mark,
29cm high
£400 - 600

Lot 134
A Clarice Cliff 'Orange
Chintz' single-handled Lotus
vase,
printed 'Fantasque Bizarre'
mark,
29cm high
£400 - 600

Lot 135
A Clarice Cliff 'Japan' vase,
shape no. 365, printed 'Bizarre'
mark,
20.5cm high
£300 - 500

Lot 136
A pair of Clarice Cliff 'Lydiat'
vases,
shape no. 565, painted with
flowers, printed 'Bizarre' mark,
15.8cm (2)
£100 - 150



132



133



134



135



136



Lot 137

A Clarice Cliff 'Gayday' Beehive honeypot and cover, inscribed 'Gayday', printed 'Bizarre' mark, 9.5cm high (2)
£100 - 150

Lot 139

A Clarice Cliff 'Broth' Dolphin jug, printed 'Fantasque' and 'Honeyglaze', restored rim, 25cm high
£100 - 200

Lot 140

A Clarice Cliff 'Secrets' sugar sifter, of conical shape, stamped 'Fantasque Bizarre', with a cork stopper, 13.5cm high
£500 - 700

Lot 138

A Clarice Cliff 'Patina' Beehive honeypot and cover, printed 'Bizarre Provisional Patent no. 23385' and 'Lawley's' retail label, 9.5cm high (2)
£100 - 150



137



138



139



140



141

Lot 141

A Clarice Cliff 'Tralee' daffodil bowl, shape no. 475, with printed 'Bizarre' mark, 32cm wide
£150 - 200

Lot 142

Three Clarice Cliff 'Lodore' plates, 23cm diameter (3)
£100 - 150



142



143



144



145



146



147



148

Lot 143

A Clarice Cliff 'Idyll' coronet jug,
printed 'Bizarre' and 'Honeyglaze' marks,
16cm high
£100 - 150

Lot 144

A Clarice Cliff 'Gardenia' café au lait vase,
shape no. 341, printed 'Bizarre' mark,
13.5cm high
£150 - 200

Lot 145

A Clarice Cliff Fantasque Bizarre
'Summerhouse' vase,
printed mark and incised '14D 6', restored,
15cm high
£500 - 700

Lot 146

A Clarice Cliff 'Autumn' sugar basin,
shape no. 516, with an electroplated cover
and extending tongs, printed mark,
9.5cm high
£100 - 150

Lot 147

A Clarice Cliff 'Blue Autumn' vase,
shape no. 184, printed 'Fantasque Bizarre'
mark,
14.7cm high
£250 - 350

Lot 148

A Clarice Cliff 'Orange Roof Cottage' vase,
shape no. 186, printed 'Fantasque Bizarre'
mark, restored rim,
14.5cm high
£150 - 200



149



150



151



152

Lot 149

A Clarice Cliff vase,
shape no.186, printed 'Fantasque' mark,
14.5cm high
£200 - 300

Lot 150

A Clarice Cliff 'Red Trees and House'
conical sugar bowl and cream jug,
both printed 'Fantasque Wilkinson' marks, one
smudged,
sugar bowl 7.2cm diameter
cream jug 6cm high (2)
£150 - 200

Lot 152

A Clarice Cliff 'Windbells' biscuit barrel
and cover,
printed 'Fantasque Bizarre' mark,
17.5cm wide
14cm high (2)
£250 - 350

Lot 153

A Clarice Cliff 'Floreat' wall charger,
printed and overprinted 'Fantasque' mark,
extensively restored,
45.5cm diameter
£200 - 300

Lot 154

A Clarice Cliff 'Orange Chintz' Stamford
trio,
comprising a teapot and cover, milk jug and
sugar basin, with two matched conical tea
cups and saucers, printed 'Fantasque Bizarre'
marks,
teapot 12cm high (8)
£200 - 400

Lot 151

A Clarice Cliff 'Autumn Crocus' vase,
shape no. 268, inscribed 'Crocus' in green and
printed 'Bizarre' mark,
20cm high
£100 - 150



153



154

Lot 155

A Clarice Cliff 'Rudyard' conical sugar sifter,
printed 'Bizarre' mark, restored body,
14cm high
£100 - 150



155



156



157

Lot 156

A Clarice Cliff 'Autumn' conical sugar sifter,
printed 'Bizarre' mark, no stopper,
14cm high
£150 - 200

Lot 157

A Clarice Cliff 'Windbells' conical sugar sifter,
printed 'Fantasque Bizarre' mark, no stopper,
14cm high
£150 - 250

Lot 158

A Clarice Cliff 'Orange Chintz' wall charger,
printed 'Fantasque Bizarre',
33.5cm diameter, and
an octagonal 'Orange Chintz' cake plate,
with a curved handle, printed mark,
21.7cm diameter (2)
£150 - 200



158

Lot 159

A Clarice Cliff 'Gardenia' café au lait Athens teapot and cover,
with a printed 'Bizarre' mark,
14.5cm high (2)
£100 - 150

Lot 160

A Clarice Cliff 'Oceanic' jug,
painted in orange, yellow, pink, blue and green, with a printed 'Bizarre' mark,
13.5cm high
£100 - 150

Lot 161

A Clarice Cliff 'Orange Tree' George jug,
printed 'Fantasque Bizarre' mark,
14.5cm high
£100 - 150

Lot 162

A Clarice Cliff 'Orange Roof Cottage' Oceanic Jug,
printed 'Fantasque Bizarre' mark,
19cm high
£200 - 300



159



160



161



162



163



164

Lot 163

Four items of Clarice Cliff 'Blue Crocus',
a preserve pot and cover, shape 230,
8cm high,
a honeypot and cover,
7.5cm high,
a cream jug 'Bonjour',
6.5cm high, and
a tankard cream jug,
7.8cm high,
all with printed marks (4)
£100 - 150

Lot 164

A Clarice Cliff 'Windbells' preserve pot and
cover,
shape no. 230 with 'Fantasque Bizarre' printed
mark,
7.5cm high, and
a 'Windbells' cylindrical preserve pot and
cover,
printed mark,
8.5cm high (4)
£150 - 200



165

Lot 165

Five Clarice Cliff items,
a Lynton sugar sifter,
12.5cm high,
a candlestick,
8cm high,
a preserve pot and cover,
8cm high,
and two pieces of 'Celtic Harvest', a cake
plate and a preserve pot and cover (7)
£150 - 200

Lot 167

Three pieces of Clarice Cliff 'Autumn
Crocus',
a conical coffee pot and cover,
19cm high,
a conical teapot and cover,
16cm high,
and a Bonjour sugar sifter, no stopper,
13cm high,
various printed marks (5)
£100 - 150



166

Lot 166

A Clarice Cliff novelty cruet set,
each piece modelled as a fish, printed
'Wilkinson Ltd., England',
6.5cm high (3)
£80 - 120

Lot 168

Two Clarice Cliff beehive honeypots
and covers,
one in a banded design of brown and
yellow, the other in 'Brookfields' pattern,
printed marks,
9.5cm high (4)
£100 - 150



167



168



169



170



171



172



173

Lot 169

A Clarice Cliff teddy bear bookend, the bear wearing an orange ribbon and seated on a green plinth, with printed marks, 16cm high
£100 - 200

Lot 170

Two Clarice Cliff preserve pots and covers, in 'Nasturtium' and 'Rhodanthe', printed marks, 9 and 8.5cm high (4)
£100 - 150

Lot 171

A Clarice Cliff 'Blue Chintz' two-egg cruet, with pepper and salt, with banded egg cups and a wooden handle, printed mark, and a 'Blue Chintz' condiment set, EPNS mounted, printed marks (9)
£100 - 150

Lot 172

A Clarice Cliff 'Stroud' Stamford tea-for-two, comprising: a teapot and cover, two cups and saucers, a milk jug, sugar bowl and side plate, printed marks, and a napkin holder, shape no. 468, printed marks (10)
£300 - 500

Lot 173

Two Clarice Cliff Bonjour teapots and covers, in 'Nasturtium' and 'Green Hydrangea' patterns, with printed 'Bizarre' marks, 12cm high (4)
£100 - 150

Lot 174

A Clarice Cliff 'Brookfields' bowl, printed mark, 22cm diameter, a 'Spring Crocus' Bonjour coffee pot and cover, a cream jug, a 'Solomon's Seal' Stamford teapot and cover, a Biarritz sugar bowl and cover, and two saucers and a plate (11)
£150 - 250

Lot 175

A Clarice Cliff 'Taormina' bowl, printed mark 'Clarice Cliff', 25.5cm diameter
£150 - 200

Lot 176

A Clarice Cliff 'Delecia Citrus' twin-branch candlestick, shape no. 609, printed 'Bizarre' mark, 21.5cm wide
£150 - 200



174



175



176



177

Lot 177

An Art Deco chrome desk clock, with a rectangular dial on an hinged plinth, 24cm wide 11.5cm high £100 - 150



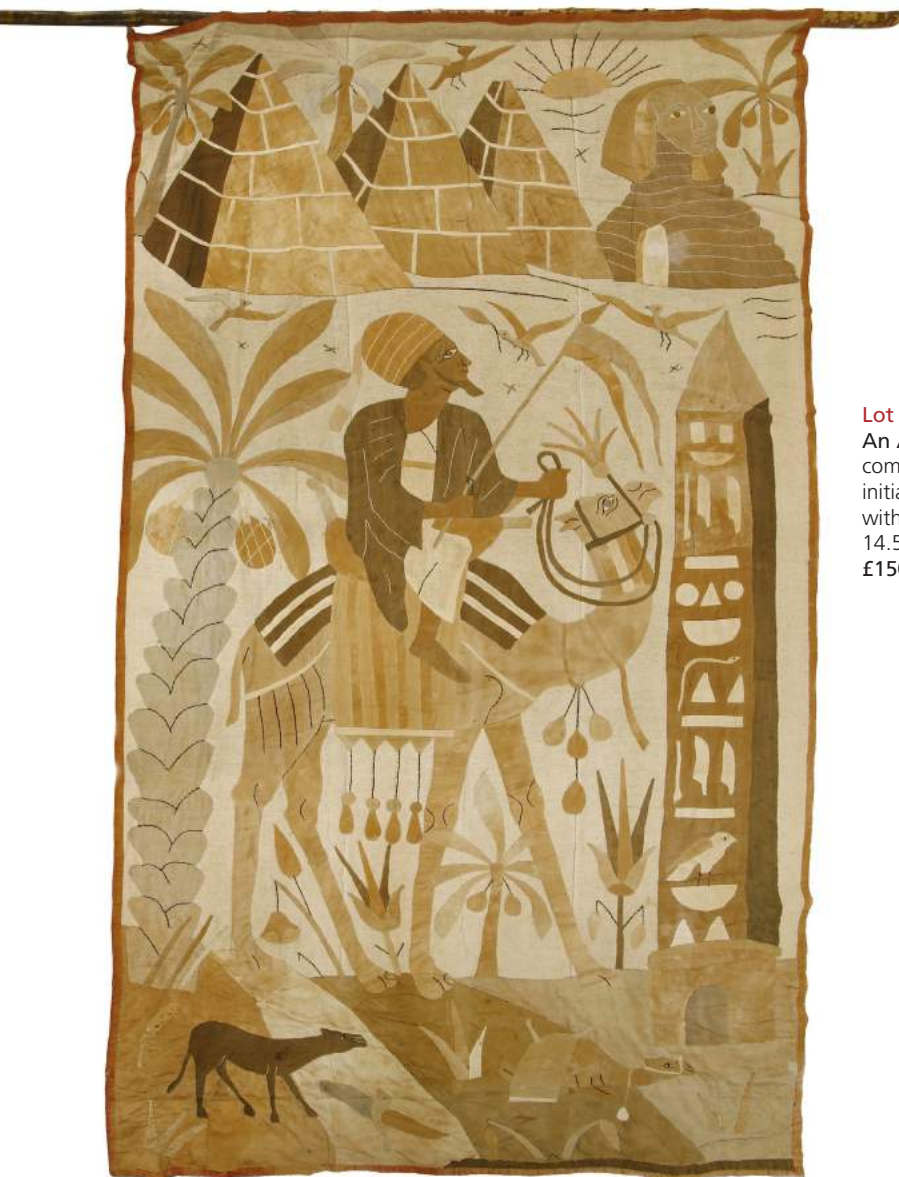
178

Lot 178

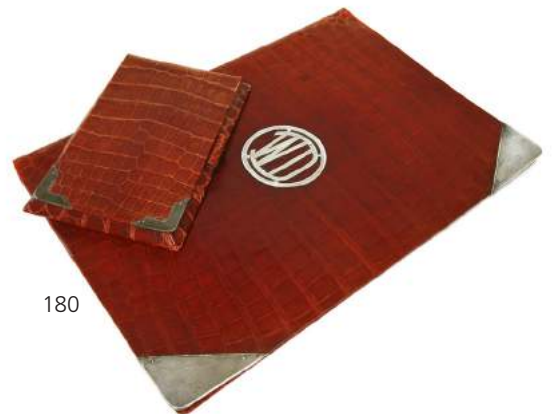
Three Art Deco ivory and onyx bibelots, after Ferdinand Preiss, each mounted with an ivory nude, seated on onyx stands, largest 7.5cm high (3) £500 - 700

Lot 179

An Art Deco patchwork wall hanging, 20th century, decorated with Egyptian designs on a cream ground, 133 x 260cm £200 - 300



179



180

Lot 180

An Asprey red crocodile skin desk set, comprising a portfolio and notepad, the notepad mounted with the initials 'W D', believed to be for Walter Dunkells, a diamond broker with De Beers, 14.5 x 22cm and 43 x 30.5cm (2) £150 - 250



181

Lot 181

A mahogany piano stool, with a Rexine-covered hinged seat, labelled 'Ministool', 52cm wide 35cm deep 53cm high £120 - 150



182



182 open



183

Lot 182

A walnut bow front cocktail cabinet, with a double hinged top, opening to reveal a mirrored interior and fitted top section, over a cupboard below, on castors, 92cm wide 42cm deep 108cm high £200 - 300

Lot 183

A Franz Hagenauer figure, depicting a dancer with arms raised, patinated metal and wood, stamped 'Atelier Hagenauer Wien', 'Made in Austria Vienna' and 'HWH', 30.5cm high £500 - 700

Lot 184

A French walnut clock garniture, the clock with an enamelled dial with Arabic numerals, in an arched case covered with flowers and sashes over a panel of shooting stars, on a marble plinth, with a pair of dished stands, 28.5cm high (3) £250 - 350

Lot 185

After J Rochard, An Art Deco spelter lioness drinking from a pool, raised on a marble and onyx plinth, signed 'J Rochard', 42cm wide 23cm high £300 - 500



184



185



186

Lot 186

An Heal's oak convex wall clock, with brass Arabic numerals and a Zenith 18-day movement, *labelled 'Reid & Sons, Gem Buildings, Blackett Street, Newcastle-on-Tyne'*, 34.5cm diameter
£400 - 600



188

Lot 187

An Art Deco silvered and mahogany table lamp, with a moulded white shade, a silvered multi-column support, raised on a stepped base, 51.5cm high
£150 - 200



187

Lot 188

After G H Laurent, a silvered bronze centrepiece, modelled as two herons flying above reeds, *signed 'G H Laurent'*, 49.5cm wide
61.5cm high
£1,500 - 2,000



189

Lot 189

An Art Deco maple and ebonised coffee table, probably by Maurice Adams, with a black glass top, 63.5cm wide
45.5cm deep
54.5cm high
£600 - 800



190

Lot 190

An Art Deco Macassar and ivory-mounted desk set, comprising:
a blotter, 55.5 x 34.5cm,
an inkstand, with two glass inkwells,
26cm wide,
a three-division letter rack,
30.5cm wide,
a blotter, a letter opener and a rule (7)
£150 - 200

Lot 193

A French Art Deco Macassar games table,
a shagreen mounted top with
a raised edge, on shaped legs
mounted with chrome sabots,
76cm square
76cm high,
together with two matched
armchairs (3)
£400 - 600



191

Lot 191

A pair of Art Deco-style maple
columns,
of plain fluted design, raised on
stepped plinths,
40cm diameter overall
122cm high (2)
£200 - 300

Lot 194

A bronze wall mirror,
1930s, with three mirrored panels,
60cm wide
60cm high
£200 - 300

Lot 192

A pair of maple side tables,
each with a shaped rectangular top
over two drawers,
58cm wide
35cm deep
46cm high (2)
£150 - 200



192



193



194

Lot 195

A pair of French iron twin-branch wall lights,
each with two lights,
40cm high (2)
£250 - 350



197



196

Lot 196

A Macassar chaise lounge,
recently reupholstered with a bolster,
142cm wide
53cm deep
66cm high
£150 - 200

Lot 197

An Art Deco octagonal palmwood centre table,
with a brass edge, tapering column and plinth,
70.5cm diameter
73cm high
£250 - 350

Lot 198

Louis Wain (1860-1939),
'The Lucky Futurist Cat' a spill vase decorated with 'meow meow'
notes, painted in colours, moulded and painted facsimile signature,
moulded 'Rd 637134', stamped 'Made in England' and printed in
black with the three rifle mark of retailer Max Emanuel, worn,
13cm high
£500 - 800



198



199 part lot

Lot 199

A collection of Wedgwood 'Garden' teawares, designed by Eric Ravilious, each with a printed design with a yellow border, comprising:
7 teacups,
5 saucers,
5 side plates,
a milk jug,
3 plates,
20.8cm diameter, and
a large dish,
24cm diameter (22)
£200 - 300



200 part lot

Lot 200

A Shelley 'Sunset and Tall Trees' pattern twelve-setting tea set, c.1930, pattern no. 11678 in the Queen Anne shape, comprising:
a teapot,
a sugar bowl,
a milk jug,
2 sandwich plates,
12 side plates, and
12 cups and saucers (41)
£400 - 600

Lot 201

After Carlos Bady
MADO S'HABILLE;
MADO SE MAQUILLE;
MADO BABILLE;
MADO SE DESHABILLE
Four pochoir illustrations signed in the plate, from 'La Journée de Mado', published by Galerie Lutetia, Paris
21 x 15cm, framed (4)
£250 - 350



202

Lot 202

An Art Deco mantel clock, with a black dial with gilt Roman numerals, a frosted glass frame and a clear face, on a black glass plinth, manufactured by TeMco (The Telephone Manufacturing Company), 19.5cm wide, 21cm high
£150 - 250



201

Lot 203

A Cranston Pottery
tazza,
with a mottled ground,
tubelined with stylised
scrollwork, *printed mark*,
28cm high
£100 - 150



203

Lot 204

A Rosenthal porcelain figure,
modelled by Richard Aigner
(1867-1925), depicting a
couple embracing, *inscribed*
'Richard Aigner:München' to
the plinth, *printed marks and*
1917 shield,
25cm high
£250 - 350



204



205

Lot 205

A Boch Frères
Keramis pottery vase,
designed by Charles
Catteau, with a crackle
glazed ground, with
turquoise, brown,
blue and black glazed
decoration, *printed*
mark 'Keramis Made
in Belgium' and 'D946
Ch. Catteau',
30.5cm high
£200 - 300



206

207

Lot 206

Six Art Deco pottery wall
masks,
one Beswick ware and five others
moulded 'Made in England',
largest 30.5cm high (6)
£100 - 150

Lot 207

Five Art Deco
pottery wall masks,
two Goebel, two
Czechoslovakian,
various marks,
largest 18cm high (5)
£150 - 200

Lot 208

Five Art Deco
pottery wall
masks,
two Goebel, one
by Royal Belvedere,
various marks,
26.5cm high (5)
£150 - 200

Lot 209

A Limoges pâte-sur-pâte
plaque,
the rectangular panel with
a lady in a diaphanous
dress, *signed 'A. Barriere,*
Limoges',
20 x 14cm, framed
£250 - 350



208



209



210

Lot 210

A Crown Devon Pottery wall charger, tubelined with a castle with flowers in the foreground, *printed mark*, 38.5cm diameter, and a flaring vase, tubelined and painted with cherry trees, *inscribed 'Crown Devon, Cherry Tree, Fielding, Stoke-on-Trent 2057'*, 25cm high (2)
£100 - 150



211

Lot 211

Two Royal Dux figures, a Spanish dancer, *raised triangle mark*, 35cm high, and a Pierrot girl, *raised triangle mark, impressed numbers*, 31cm high (2)
£250 - 300



212

Lot 212

A Katzhütte figure of a lady, in a green and yellow dress fringed with flowers, on a domed plinth, *printed mark in green, 'B73'*, 42.5cm high
£150 - 200

Lot 213

A Katzhütte figure of a lady, wearing a blue dress and hat, yellow gloves and black shoes, on a domed plinth, *printed mark in green, 'HK42'*, 51.5cm high
£150 - 200

Lot 214

A Katzhütte figure of a lady, wearing a pink dress, hat and shoes, on a domed plinth, *printed mark in green, 'H41' and impressed '5'*, 50.5cm high
£150 - 200

Lot 215

A Katzhütte dancing couple, she wearing a pink dress, he in grey trousers, on a domed plinth, *printed green mark and 'K18'*, 50.5cm high
£150 - 200



213



214



215

Lot 216

A Royal Dux figure of a dancer, in a billowing floral skirt and a maroon bodice, *raised pad mark, printed mark and impressed '153.37'*, 56cm high
£400 - 600

With Christie's, 'The Barbra Streisand Collection of Decorative and Fine Arts and Memorabilia', 4 March 1994.



216

Lot 217

A Rosenthal figure of a Korean dancer, designed by Constantin Holzer-Defanti (1881-1951), 41cm high, fixed on a wood plinth 44cm high overall
£250 - 350



217

Lot 218

A Katzhütte figure of a fan dancer, wearing a lavender and blue dress, on a domed plinth, *green printed mark 'H.K. 42'*, 50cm high
£150 - 200



218

Lot 219

A Goebel figure of two dancers, *impressed mark and 'G.F. 7'*, 29cm high
£150 - 200



219

Lot 220

Two Katzhütte figures of ladies with dogs, each wearing a blue or pink dress, *printed marks in green and numbered 'B44' and impressed '57'; 'A97' and impressed '1'*, 25cm high (2)
£150 - 250



220

Lot 221

Spare lot



222

Lot 222

An Art Deco Macassar games table, with a plain top, each corner fitted with an ashtray, a dice dish and a drink holder, together with four matched chairs, each with a barrel back and suede seat, on tapering supports with chrome caps, 85.5cm square 70.5cm high (5) £800 - 1,200

Lot 223

An Art Deco spelter figure of a pheasant, with gilt details, raised on an oval plinth, 52.5cm wide, and another pheasant, 46cm wide (2) £200 - 300



223

Lot 224

A pair of Art Deco walnut and bird's-eye maple bedside chests, each with three drawers and a shelf to one side, with Bakelite handles, 54cm wide 46cm deep 69cm high (2) £200 - 300



224

Lot 226

A Charlotte Rhead 'Poppy' charger, with a tubelined border centred with poppies and leaves in orange, blue and gold, inscribed pattern no. '1550' and printed 'Wood and Son', 36.7cm diameter £150 - 250



226

Lot 225

An Art Deco spelter figure of a man with an axe, now painted, on a marble plinth, 74.5cm wide 57cm deep £250 - 350



225



227

Lot 227

Marcel Renard (French, 1893-1974)
an earthenware figurine, 'La Soie' (Silk),
c.1925, modelled for Fau et Guyard, with
pink lustre and gold glaze, *impressed
maker's marks*,
48cm high
£500 - 700

Around a hundred of these figures were
made and two were shown at the Paris
Intercontinental Exhibition in 1925: one in
the silk section of the Pavilion of Lyon and
Saint-Étienne, the other in the Salon des
Artistes Décorateurs.



228

Lot 228

Three Goebel figural decanters,
a musician, a man walking, a man looking
perplexed, *each with printed and stamped
marks and numbered 'K.L.828', 'K.L.904',
and 'K.L.836A'*,
27cm highest (3)
£150 - 200

Lot 229

An Art Deco pottery mask of a girl,
the eyes pierced, *inscribed 'Italy'*,
30cm high
£150 - 200



229

Lot 230

**Six Art Deco Czechoslovakian pottery
wall masks,**
two printed 'Royal Dux', *most inscribed with
five digit numbers*,
largest 21.5cm high (6)
£150 - 200

Lot 231

Four Beswick ware pottery wall masks,
two similar pairs of women's heads, either
wearing a beret or ribbons, *printed and
moulded numbers*,
24cm high (4)
£150 - 200



230



231



232



233



234



235



236

Lot 232

Two Keramos Art Deco pottery wall masks, 18cm high, and two further pottery busts, 17cm high (4)
£150 - 200

Lot 233

Two Goebel wall masks, each modelled as a lady with long eyelashes, one inscribed 'Specially designed by Mrs Agnes Richardson', 27.5cm high, and two dancing lady wall plaques, each pierced, 24cm diameter (4)
£200 - 300

Lot 234

A Katzhütte figure of a lady, in a blue dress and hat wearing black gloves, on a domed plinth, printed mark in green, inscribed 'KL4' and stamped '8', 50.5cm high
£150 - 200

Lot 235

A Royal Dux figure of a nude, lying on her back holding a golden ball, raised triangle mark, impressed '3122' and '12', 52cm wide
£200 - 300

Lot 236

Two Katzhütte pottery dancing figures, 23.5 and 27cm high, two further figures of dancers, 29 and 32cm high, and a Goebel mask of a lady, 16cm high (5)
£120 - 150



237



238



239

Lot 237

A Tri-Art pottery figure of a nude, inscribed 'Triart Bassa... Italy', 15cm high, two groups of girls singing, 14 and 20.5cm high, and a Rosenthal saxophone player, 24cm high, various marks (4)
£150 - 200

Lot 238

An Italian pottery figure of a girl, wearing a blue dress painted with butterflies, inscribed 'VIBI ART/304 Turino Italy', 38.8cm high, and another figure of a lady, 42cm high (2)
£150 - 200

Lot 239

Three Crown Devon Fielding figures of ladies, a girl with a bolshoi, 25.5cm high, a lady in a hat, 24.5cm high, and a dancer, 19.5cm high (3)
£120 - 150

Lot 240

A Czechoslovakian figure of a lady playing a flute, 29.5cm high, a Keramis nude, 20cm high, and a Hutschenreuther dancer, 18.5cm high (3)
£100 - 150



240

Lot 241

A Royal Dux figure of a girl, wearing a mottled dress and wearing brown shoes, raised triangle mark, impressed '2984/6', 32cm high, and another figure of dancers, raised triangle mark, '3164/4', 21cm high (2)
£200 - 250



241



242



243



244

Lot 242

An oak book table, in the manner of Heal's, the navette chamfered top above an undertier, on gouged stile supports, stamped '4106' to the base, 81.5cm wide 51cm deep 66cm high £200 - 300

Lot 244

An Art Deco walnut table, with a veneered top, raised on chrome columns, 70cm square 61.5cm high £200 - 300

Lot 243

An Art Deco upholstered tub chair, 68cm wide 66cm deep 60cm high seat 38cm high £120 - 150

Lot 245

An Art Deco walnut drinks cabinet, with a central mirrored cupboard, with a design of cocktail glasses etched to the glass, over two drawers and flanked with cupboards, 136cm wide 45.5cm deep 86.5cm high £200 - 300



245



246

Lot 246

An Art Deco figure 'The Bat Dancer', after Lorenzl, a cast bronze and patinated figure, signed indistinctly to the foot, on an onyx plinth, 20cm high £200 - 300



247

Lot 247

A maple centre table, with two extra leaves, on a central column, 110cm wide 153cm extended 75cm high £200 - 300

Lot 248

An Art Deco walnut bedside cabinet,
with a shelf, two drawers and a cupboard,
raised on a plinth,
66cm wide
35.5cm deep
76cm high
£120 - 150

Lot 249

A pair of French iron and wood wall lights,
with a link frame (2)
£200 - 300



248

Lot 250

An Art Deco Macassar
desk,
the plinth top with four
drawers to each pedestal,
with chrome handles
and escutcheons, on
a stepped chrome plinth,
137cm wide
36cm deep
78cm high
£150 - 250



250



249

Lot 251

A French multiplate wall mirror,
with a central shaped plate, mounted with pink-tinted
and cut-glass panels,
92.5cm wide
140cm high
£300 - 500



251

Lot 252

An Art Deco wrought iron table lamp,
with a moulded glass shade, *inscribed in the
mould 'Muller Frères Lunéville'*,
44cm high
£150 - 200



252

Lot 253

An Art Deco oak uplighter,
with chrome details,
164.5cm high
£200 - 300



253



254

Lot 254
An Art Deco inlaid walnut wall clock,
with a silvered dial,
32.5cm wide
15.5cm deep
74cm high
£120 - 150

Lot 255
An Art Deco Macassar daybed,
upholstered with a vermiculated material, with bolsters,
200cm wide
95cm deep
64cm high overall
£800 - 1,200



255

Lot 256
An ebonised and chrome desk,
with an arrangement of three
drawers to each side,
149cm wide
76cm deep
75cm high
£600 - 800



256

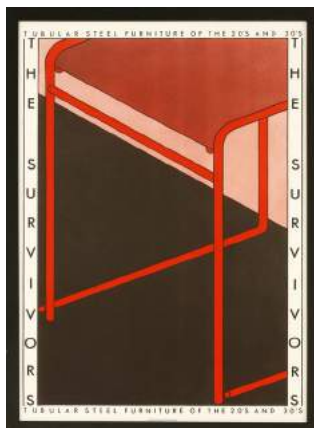
Lot 257
Two exhibition posters,
'The Geffrey Museum' and
'Tubular Steel Furniture of the
20s and 30s',
75 x 50cm, framed (2)
£120 - 150

Lot 258
*Ferdinand Pire (Belgian, b.1943)
LE PEINTRE ET SON MODELE
Lithograph, highlighted with gold,
signed and inscribed in pencil,
30 x 36cm
£250 - 350

Lot 259
After William Gropper
(1897-1977)
DANCERS
Lithograph
30 x 23cm, and
After T P Wagner
CARESSES
Lithograph
30 x 23cm, framed (2)
£100 - 150



257



258



259



260



261



262

Lot 260

An Art Deco walnut bookcase,
with two sliding glass doors over a cupboard,
101cm wide
38cm deep
165cm high
£150 - 200

Lot 261

A silver-plated cocktail shaker,
stamped 'Wm Rogers Hamilton Can.',
33cm high
£100 - 150

Lot 262

A Limoges enamel
table set,
designed by Marylou
Fauvet, comprising twelve
knife rests and two salts,
in pink and red enamels,
*inscribed in gold 'Marylou,
Limoges', in original case,
printed 'E Brondeau/
Bvoutier/Limoges',*
case 38cm wide overall
£150 - 200



263



264



265

Lot 263

A pair of Art Deco walnut elbow chairs,
53.5cm wide (2)
£300 - 500

Lot 264

An Art Deco mahogany nest of tables,
with quarter tables, each with an undertier,
60.5cm diameter
51cm high
£120 - 150

Lot 265

A rare George Jensen silver breakfast
coffee pot,
*import marks for London 1931, various
stamped marks,*
with a leaf and berry cover, and a swing
handle,
17cm high to top of finial
21cm high overall (2)
£300 - 500



266



267

Lot 266

A silver-plated condiment set, in the form of a streamlined saloon car, stamped 'FOREIGN', 11.5cm long
£100 - 150

Lot 267

An Art Deco cocktail stand, the golf ball mounted with an enamelled 19th hole flagpole, the six cocktail sticks modelled as clubs, 15.5cm high, and a silver-plated cocktail shaker, by Walker & Hall, 23.5cm high (2)
£100 - 150



268



270



269

Lot 268

*Two Fulham pottery plates by Quentin Bell (1910-1996), the first with a portrait of a lady in period costume, holding a cane, the second with two embracing mermaids, each with impressed factory marks, one with script signature, 22 and 26cm diameter (2)
£200 - 400

Lot 269

After Maurice Guiraud-Rivière (1881-1947), an Art Deco alabaster nude 'Enigma', modelled seated, holding out her hand, on a marble plinth, 26.5cm wide 33cm deep 37.5cm high
£600 - 800

Lot 270

An Art Deco walnut nest of tables, the circular inlaid top, with four quarter tables, each with an undertier, 66cm diameter 55cm high
£200 - 300

Lot 271

An Art Deco walnut coffee table, the crossbanded and veneered, shaped circular top, on ebonised supports, with a circular undertier, 60.5cm diameter 50.5cm high
£120 - 150



271



273

Lot 272

An Art Deco standard lamp, attributed to Syrie Maugham after a design by Jean-Michel Frank, c.1930-35, with four light fittings, mounted with brass lacquered mounts and a glass cylindrical column, on a glass-mounted plinth, 143.5cm high
£2,500 - 3,500

Syrie Maugham (1879-1959) opened a highly successful decorator's shop in London in 1922, moving to Grosvenor Square in 1924.



274

Lot 273

After Robert Bousquet, an Art Deco bronze figure of a nude holding a bow, stamped, on a marble plinth, *incised 'BOUSQUET'*, 35cm wide
34.5cm high
£600 - 800

Lot 274

A Lalique 'Gui' glass vase, moulded with mistletoe with brown highlights on the opalescent, *etched 'R. Lalique France no. 948'*, 17cm high
£1,000 - 1,500



275

Lot 275

A Lalique 'Formosa' glass vase, moulded with fish in opalescent glass, no. 934, *stencilled 'R. Lalique France'*, 17cm high
£1,500 - 2,000



272

Lot 276

An Art Deco chrome ceiling light,
with moulded glass panels depicting a lady between flowers,
40cm diameter
25cm high approximately
£250 - 350



276

Lot 277

Maurice Guiraud-Rivière (1881-1947),
'The Comet', a silvered bronze figure, inscribed 'Guiraud-Rivière Etling, Paris'
on a marble plinth,
60cm wide
49.5cm high
£4,000 - 6,000



277

Lot 278

A Lalique 'Lys' glass opalescent bowl,
no. 382, the body with four lily flower heads
forming the feet, moulded mark 'R Lalique',
24cm diameter
£250 - 350



278

Lot 279

A Lalique 'Pinsons' moulded glass bowl,
with finches within panels of stylised leaves,
engraved 'Lalique, France',
23.5cm diameter
£180 - 220



279

Lot 280

A Lalique moulded glass vase,
stencilled 'Lalique',
18cm high
£250 - 350



280



281

Lot 281

A Lalique 'Spirit of the Wind' car mascot, in opaline glass, etched 'n.136, Lalique France', 24cm wide, 14.5cm high, £600 - 800



282

Lot 282

Two Lalique 'Tête d'Aigle' car mascots, originally designed in 1928, inscribed 'Lalique, France', 11cm high (2), £200 - 300



283

Lot 283

Two Lalique 'Coq Nain' glass car mascots, one inscribed 'Lalique France', and labelled 'Cristal Lalique Paris', the other 'R. Lalique', 20cm high (2), £200 - 300



284

Lot 284

A Lalique 'Tête de Coq' glass car mascot, inscribed 'Lalique France', chip to top, 17cm high, and a 'Chrysis' car mascot, of a reclining lady, labelled 'Cristal Lalique', 13.5cm high (2), £200 - 300

**Lot 285**

A Daum glass bowl, of flaring ribbed form, on a square plinth, etched 'Daum Nancy France', 23cm high, £150 - 200



285

Lot 286

A collection of Lalique 'Honfleur' glassware, comprising: 8 dishes, 15cm diameter, 8 shallow bowls, 15cm wide, 8 deep bowls, 14.5cm wide, all inscribed 'Lalique, France' (24), £300 - 500



286



287

Lot 287
A Daum glass vase,
of ribbed form, etched
'Daum Nancy',
24cm high
£100 - 150

Lot 288
A pair of Art Deco
walnut inlaid console
tables,
each of demilune form,
with sunburst inlaid tops
and half columns, on
ebonised plinths,
88cm wide
49cm deep
71cm high (2)
£450 - 550



288

Lot 289
An Art Deco burr maple side
cabinet,
with a central breakfront of four
drawers flanked with cupboards,
the right-hand cupboard fitted
with an internal drawer,
137cm wide
57cm deep
98.8cm high
£250 - 350



289



290

Lot 290
An Art Deco
patinated bronze
lamp base,
after Pierre Le
Faguays, mounted
with a nude,
inscribed 'Fayral',
with a frosted glass
panel, on a marble
plinth,
42cm high
£800 - 1,200



291

Lot 291
A marble and onyx standard
lamp,
1930s, of ribbed sectional form,
156cm high
£300 - 500

Lot 292
An Art Deco coffee table,
with a painted faux marble top,
raised on an ebonised stand,
59.5cm diameter
42cm high
£120 - 150



292



293

Lot 293

A French Art Deco rosewood dining table, with two further end leaves, 150cm long, 250cm extended, 95cm wide, 73.5cm high, and eight matching dining chairs, with cream leather seats (9) £1,000 - 1,500

Lot 294

After Alexander Kéléty, a patinated bronze bust of a man, inscribed 'Kéléty', stamped 'bronze 26' and 'L.N.J.L. Paris' within a roundel, with label 'Gregoire Objets d'Art Clermont-Fd' on a plinth, 38cm high overall £600 - 800



294

Lot 295

An Art Deco Macassar veneered chest, with seven drawers, dentil details to the top, canted corners, chrome handles and chrome sabots, 99cm wide, 50.5cm deep, 151.5cm high £800 - 1,200

Lot 296

An Art Deco inlaid walnut and Macassar coffee table, 91cm wide, 51cm deep, 55.5cm high £150 - 200



296



295



297

Lot 297

An Art Deco walnut mantel clock, with chrome Arabic numerals and horizontal details, 56cm wide 14cm deep 21cm high, and an oak and walnut clock, with a copper chapter ring and chrome Arabic numerals, 33cm wide 13.5cm deep 21.5cm high (2)
£150 - 200



298 folded

Lot 298

An Art Deco walnut drinks trolley, with a cantilever top folding from two tiers to a larger surface, with a shelf below, a chrome panel with end cupboards, all on castors, 89cm wide 36cm deep, 66cm open, 91cm high
£750 - 950



298

Lot 299

An Art Deco walnut book table, with an octagonal top, with two shelves on each side, raised on ebonised supports, 53.5cm diameter 54cm high
£120 - 150



299

Lot 300

An Art Deco Macassar veneered cocktail cabinet longcase clock, retailed by Aspreys, the octagonal shagreen dial with a silvered chapter ring with Arabic numerals, enclosing a Westminster chiming movement, chiming on gongs, by Elliott, London, the trunk concealing three sliding shelves with fret-cut details for twelve glasses and three decanters, dial 12in, labelled 'Asprey, London', 36cm wide 21cm deep 189cm high
£3,000 - 5,000



300



301

Lot 301

An Art Deco burr walnut and ebonised suite, comprising:
a pair of armchairs, with modern leopard print upholstery, 72cm wide 95cm deep 85cm high seat 45cm high, and
a settee, 168cm wide 86cm high seat 50cm high (3)
£1,800 - 2,200

Lot 302

A mahogany 'envelope' card table, after a design by René Drouet, with a folding baize top, a plain chrome edge and raised on swept supports, 60cm square 80cm square open
£200 - 400

Lot 303

An Art Deco walnut cocktail cabinet, with an hinged top opening to reveal a mirrored interior, over a serpentine front with a drawer and cupboard, 68cm wide 36cm deep 113cm high
£150 - 200

Lot 304

An Art Deco chest of four drawers, with Bakelite drop handles and later stepped feet, 83cm wide 51cm deep 92.5cm high
£300 - 500



302



303



304



305

Lot 305

An Art Deco walnut breakfront sideboard, with the central top cupboard fitted with two glass drawers for serving drinks, flanked with drawers and further cupboards,
123cm wide
52cm deep
105cm high
£250 - 350



307

Lot 307

A pair of Art Deco leather club chairs, by William Birch, High Wycombe, with mushroom-coloured leather upholstery, stamped 'W. Birch 1938' to one back leg, on ball castors,
85cm wide
82cm deep
seat 39cm high
85cm high (2)
£500 - 700

Lot 306

A Red Rose Guild walnut chest of drawers, c.1936, by Harry Norris of Bolton, with six drawers, with initials 'HN' to the bottom drawer,
99.5cm wide
49cm deep
130.5cm high
£700 - 900

This chest of drawers was given as a 21st birthday present by Margaret Pilkington, who founded the 'Red Rose Guild'.

The Guild began life in 1921 as 'The Red Rose Guild of Artworkers', but later changed its name to 'The Red Rose Guild of Designer Craftsmen' to reflect its emphasis on craftwork. The symbol of the Guild, the red rose of Lancashire, reflected the Guild's origins in the north-west and its regional focus persisted despite the participation of craftspeople from across the country. Its main activity was to hold exhibitions, although there was debate about whether a permanent outlet for displaying and selling craftwork would be preferable.

Thanks to Margaret Pilkington's connections, the exhibitions were held at the Whitworth Art Gallery from 1937, and in 1940 the Guild moved there. The exhibitions showcased the leading practitioners of craftwork and there was a strong ethos promoting the importance of craftwork in modern society.



306

MODERN FURNITURE AND DESIGN

308-637

Lot 308

A dining room suite, comprising: an oval glass table, raised on chrome supports, 160cm wide 99.5cm deep, and five Marrow Associates dining chairs (6) £200 - 400

Lot 309

A Parker Knoll 'Maldon' PK-938 armchair, 1960s, 74cm wide 75cm deep 76cm high £150 - 200

Lot 310

An Ercol 'Pebble' nest of three tables, the shaped tops on tapering supports, labelled, largest 65cm wide 44cm deep 40cm high (3) £150 - 250

Lot 311

A pair of stained armchairs, designed by Oswald Haerdtl, 1960s, with hoop backs, drop-in seats and ebonised legs, 54.5cm wide (2) £250 - 350

Lot 312

A set of six oak dining chairs, designed by Kurt Østervig, with red leather seats and backs, 51cm wide 53cm deep 77cm high (6) £250 - 350



308



309



310



311



312



313



314

Lot 313 §
A Gordon Russell 'Marlow' rosewood sideboard, the cupboards enclosing two shelves and two drawers with a maple interior, 213.5cm wide 45.5cm deep 71cm high
£1,000 - 1,500

Lot 314
A teak teardrop coffee table, 131cm wide 62cm deep 41cm high
£100 - 150

Lot 315
A pair of Louis Poulsen hanging light pendants, designed by Poul Henningsen, in red, 40cm diameter (2)
£150 - 200

Lot 316
A pair of Louis Poulsen PH5 hanging pendant lights, designed by Poul Henningsen, in lilac with blue reflectors, 48cm diameter (2)
£300 - 500

Lot 317
A chrome adjustable standard lamp, 1970s, with an half cylindrical shade, stamped 'Omi', 126cm high
£100 - 150

Lot 318
A black and green glazed terracotta lamp base, 20th century, in the form of a pharaoh, with an indistinct signature to the reverse, 66cm high
£200 - 400



315 one of a pair



316 one of a pair



317



318

§ FURNITURE MADE OF BRAZILIAN ROSEWOOD (DALBERGIA NEGRA)

To comply with CITES Regulations on post-1947 furniture made of Brazilian Rosewood, all post-war rosewood furniture items have Article 10 certificates. If you are purchasing rosewood furniture for commercial purposes and not solely for your own use, CITES regulations require you to obtain your own certificate. You would need to contact the Animal Health and Veterinary Laboratories Agency ('AHVLA') and, as part of the process of obtaining your document, it is a requirement that you have seen sight of the Sworders' certificate or are aware of its reference number.

It is therefore the responsibility of commercial buyers to ensure that they obtain a copy of the appropriate certificate, or the certificate reference number, after purchase from Sworders Fine Art Auctioneers.

For confirmation of the certificate number, please refer to our website (www.sworder.co.uk).

Lots 319-336

The Contents of East Barsham Manor,
Norfolk

Lot 319

*John Piper (1903-1992)

EAST BARSHAM MANOR (Levinson 320)
Screenprint in colours, 1981, signed in pencil
and numbered 60/70
55 x 76.3cm
£600 - 800



319

Lot 320 §

A rosewood wall cabinet,
with sliding cupboards, *lacking handle,*
one replaced, on chrome supports,
152.5cm wide
46cm deep
67cm high
£200 - 300



320



321

Lot 321

An Art Deco-style maple
three-drawer chest,
with ebonised handles and legs,
105cm wide
47cm deep
70cm high
£250 - 350

Lot 322

A pair of Photax photographic lights,
140cm high (2)
£150 - 200

Lot 323

A set of four contemporary barrel
back chairs,
63cm wide (4)
£250 - 350



322



323



324



325



326



328



327

Lot 324
A Danish chocolate leather
two-seater settee,
145cm wide
80cm deep
81cm high
seat 40cm high
£250 - 350

Lot 325
A set of four chrome wire
chairs,
designed by Harry Bertoia (4)
£200 - 300

Lot 326
An 'Atom' coat stand,
169cm high
£100 - 150

Lot 327
A pair of Danish black leather
armchairs,
72cm wide
74cm deep
67cm high
seat 40cm high (2)
£200 - 400

Lot 328
A modern chrome adjustable
standard lamp,
170cm high approximately
£100 - 150

Lot 329 §
A Danish rosewood desk,
with a plinth top and three drawers
to each side,
138cm wide
67cm deep
74cm high
£700 - 900



329

Lot 330

Two Fase table lamps,
42cm high (2)
£150 - 200

Lot 331

An LC2 sofa,
after a design by Le Corbusier,
130cm wide
70cm deep
67cm high
seat 43cm approximately high
£250 - 350

Lot 332

An LC2 sofa,
modern, after a design by Le Corbusier,
130cm wide
70cm deep
67cm high
seat 43cm high
£250 - 350

Lot 333

A pair of tubular chrome armchairs,
with upholstered seats and arms (2)
£100 - 150



330



331



332

Lot 334

A Guaiuba chair,
designed by Carlos Motta,
50cm wide
£200 - 300

Lot 335

Six teak dining chairs,
with oatmeal seats, labelled
'Ein Habeo Modell' (6)
£150 - 250

Lot 336

A teak wall cabinet,
with sliding white plastic
cupboards, raised on chrome
supports,
152.5cm wide
46cm deep
67.5cm high
£200 - 300



333



334



335



336



337



338

Lot 337

A David Bowie 1989 'Tin Machine' tour autographed programme and ticket, the programme signed by four members of the band, and together with Tin Machine album 'Prisoner of Love' with heart-shaped disc and a single 'Up The Hill Backwards' (4)
£200 - 300

Lot 338

David Bowie 1989 'Tin Machine' tour autographed programme and ticket, the programme signed by four members of the band, including Bowie, together with two albums 'The Glass Spider Tour Press Conference 1987' and 'Maggie's Farm (live) + Tin Machine', and an Howard Jones picture disc (5)
£200 - 300

Lot 339

A 2001 Taylor 714-CE electro acoustic guitar, serial number 2001****09, the cutaway dreadnought body in natural finish with gold-plated fittings, mother-of-pearl inlays and a Fishman pre-amp, complete with original fitted case and 'case candy'
£1,200 - 1,800

Lot 340

A 1964 Epiphone Rivoli bass guitar, serial number 1****9, the double cutaway body in a light tobacco sunburst finish, an additional pickup was added to the bridge of this guitar, but it has subsequently been removed and the hole patched, that pickup, wiring and diagrams are included together with a gig bag
£1,200 - 1,800



339



340



Until November 1952, the popular music charts, as it was, had reflected the sale of both sheet music and shellac 78 rpm records. In November 1952, the music paper 'The New Musical Express' published the very first singles' chart made up of purely record sales. That chart was the first breath of what was to become Pop Culture. A revolution led by liberated teenagers, stepping out from the austerity of post-war Britain.

For the vendor, Tim Claydon, this collection has been a lifetime's work:

'My collection was fuelled by my grandmother taking me, in 1963 as a three-year-old, into Woolworths in Maldon High Street to buy my very first single - 'She Loves You' by The Beatles.

As a young child I played my parents' discs on our little record player, some 78s and some 45s. If not listening to those over and over again, I would be listening to Radio Caroline or Radio Luxembourg on our transistor radio.

The first ever number one was from my parents' collection - 'Here in My Heart' by Al Martino. This was standard crooning fare and much of the early charts was similar, not yet teenage driven, but reflective of the older generation. Artists such as Perry Como, Guy Mitchell and Frankie Laine were among those first hits, these on shellac 78s, as were most of the first 50 number ones. The first number one to be available on 45 was released on the Decca label in July 1954 - 'Cara Mia' by David Whitfield.

Naturally, those early days were full of firsts:

the first female artist (No. 2) Jo Stafford - 'You Belong To Me';
the first British act and first group, The Stargazers - 'Broken Wings' (No. 7);
the first instrumental with 'Moulin Rouge' by Mantovani (No. 11), and
the first black artist, Winifred Atwell - 'Let's have another party' (No. 26).

Things changed almost overnight and the crooners' days were finally numbered when, on 25 November 1955, Bill Haley and his Comets made number 1 with 'Rock around the Clock' (No. 39).

July 1957 saw a young man called Elvis hit the top spot with his number one, 'All Shook Up' (No. 62), being his first of seventeen chart-toppers.

'That Will Be The Day' by The Crickets is in the collection (No. 64), which also contains the 1959 hit, 'The Day the Rains Came', with an extremely rare sleeve signed by the artist, Jane Morgan (No. 79).

Included is Cliff Richard's 'Living Doll' (No. 88) and 'From Me to You' (No. 151), the first of eleven consecutive releases from The Beatles to reach the top spot. The only band able to throw down a challenge to the all-conquering mop tops, the Rolling Stones, have 'It's All Over Now' (No. 173), with Tamla Motown arriving in 1966 with 'Reach Out' from The Four Tops hitting the pinnacle (No. 225).

The first hit of the 1970s was Edison Lighthouse with 'Love Grows' (No. 281). The first ever picture sleeve was Voodoo Child by Jimi Hendrix (No. 293), followed shortly after by the arrival of glam rock in the guise of T. Rex with 'Hot Love' (No. 298).

Abba's first chart-topper came with 'Waterloo' (No. 348), one of many Eurovision Winners to get the number one spot. The first disco hit was George McCrae's 'Rock your Baby' (No. 353), while Michael Jackson's first appearance was alongside The Jacksons singing 'Show You the Way to Go' (No. 407).

The first 12-inch single was Boney M's 'Rivers of Babylon' (No. 423). The first ever picture disc number one was for 'Are Friends Electric?' by Tubeway Army (No. 439) with the first coloured vinyl being 'Message in a Bottle' by The Police (No. 443).

Madonna, the most successful ever female artist, had her first number one with 'Into the Groove' (No. 554). The Bee Gees had their fifth number one 'So You Win Again' (No. 599) exactly twenty years after their first, 'Massachusetts' (No. 238). The same feat was replicated when the England Football Team hit the top spot with 'World in Motion' (No. 646), the previous having been 'Back Home' (No. 286) in 1970.

The last song in this collection is 'I Will Always Love You' by Whitney Houston (No. 684). It sat at the top for ten weeks and fittingly brings this rare compilation to a close.

A chart of sorts still continues to this day, but after 1992 the charts included cassette tapes, then CDs, and now of course downloads. This collection, therefore, represents the 'golden years', a time when a large part of the population regularly listened to the weekly countdown, eagerly anticipating a new number one. What magical memories are reflected in this special lot.



Lot 341

A unique collection representative of the golden age of the single record, from November 1952 to December 1992, every number one hit in its original format, some rare 45s and 78s, some very collectable 12-inch singles and picture discs, 684 number one hits in total, make this the ultimate jukebox collection
£10,000 - 15,000





342



343



344

Lot 342

A pair of Furze stage lights, green painted with hanging bars (2)
£200 - 300

Lot 343

A pair of tan leather 'Coronado' armchairs, designed by Tobias Scarpa for C & B Italia, with button backs and seats (2)
£200 - 300

Lot 344

A Fornasetti blackamoor bust table lamp, unmarked, 60cm high
£1,000 - 1,500

Lot 345

*An enamelled vase by Paolo di Poli (Italian, 1905-1996), the slender copper vase enamelled with blue, pink and silver, on a bark-like ground, *inscribed 'De Poli'*, 30cm high
£400 - 600

Lot 346

An Italian blonde wood wardrobe, after a design by Giovanni Garibaldi and Paolo Buffa, each door front with carved panels, with bands of flowers and foliage, 305cm wide 65cm deep 188cm high
£1,500 - 2,500

Lot 347

*Pierre Noel Martin (French, 1951-2006), a laminated wood and painted sculpture, *signed and dated 'Nov 1975'*, 48cm high
£200 - 300



345



346



347



348

Lot 348

A set of six Italian walnut dining chairs, designed by Gianni Vigorelli, with black leather seats and 'X' back supports, 47cm wide 52cm deep 95cm high seat 48.5cm high (6) £700 - 900



349

Lot 349

A pair of Macassar lounge chairs, designed by Guglielmo Ulrich, with cream cushions and panels, 71.5cm wide 120cm deep 62cm high seat 30cm high (2) £800 - 1,200

Lot 352

An American walnut and wenge wood cutlery chest, designed by Charles Cobb, with two fitted drawers, signed to the reverse 'Charles B Cobb 22786 Narra Northern Calif walnut AF Wenge', 68cm wide 40cm deep 34cm high £500 - 700



350

Lot 353

A Staples teak 'Ladderax' wall unit, designed by Robert Heals for Staples, 1960s, comprising: a secretaire, a chest of three drawers, a cupboard with glass sliding doors and four shelves, 200cm high £300 - 500



351

Lot 350

A wrought iron and glass coffee table, 1950s, after a design by Giovanni Ferrabini, 131.5cm wide 76cm deep 51cm high £150 - 200

Lot 354

An Eames-style revolving desk chair, £100 - 150



352

Lot 351

A pair of Italian armchairs, designed by Guglielmo Ulrich, with silver-grey upholstery, 90cm wide 75cm deep 90cm high (2) £700 - 900



353



354



355

Lot 355

An enameled metal dentist's cabinet, the marble top with an hinged compartment over four drawers and a cupboard, the interior with plastic dishes and some glass panels, 95cm wide 41cm deep 114cm high £250 - 350

Lot 356

An Ercol cheval mirror, with a cupboard below, enclosing two shelves, raised on castors, 48cm wide 48cm deep 146cm high £200 - 300

Lot 357

An Italian glass dining table, the bevelled edge raised on a mirrored lucite modular stand, 200cm wide 71cm deep 100cm high, together with six dining chairs (4+2) on chrome supports (7) £400 - 600

Lot 358 §

A Danish rosewood circular dining table, designed by Arne Vodder, 119.5cm diameter 217.5cm extended 74cm high £400 - 600



356



357



358



359

Lot 359

A Ladderax modular teak shelving unit, designed by Robert Heal for Staples, 1960s, with wood ladder sections comprising: 7 uprights, 9 shelves, 5 glazed cupboards, with 5 various glass shelves, 2 three-drawer sections, and 2 secretaire drop-down sections, 378cm wide overall 200cm high £700 - 900



360

Lot 360

A Swedish 'Cebe' adjustable lamp, 1960s, in light grey and with a clamp-on bracket, and a Building Research Establishment copper and white metal ceiling light, 26cm high, with original receipt (2)
£100 - 150

Lot 361

A pair of Italian armchairs, with grey upholstery, on brass supports, 75cm wide (2)
£300 - 500



361



362

Lot 362

An Italian two-tier trolley, 69.5cm wide 44cm deep 70cm high
£100 - 150



363

Lot 363

A rocking chair, 1960s, with bentwood arms, a spindle back and turned supports, with a green upholstered seat and striped backrest, 61cm wide 90cm deep 88cm high
£100 - 150



364

Lot 364 §

A Danish rosewood circular dining table, 115cm diameter 70.5cm wide 71cm high
£300 - 500

Lot 365

A pair of bronze boxing hares, modern, 85cm high (2)
£500 - 700



365

§ FURNITURE MADE OF BRAZILIAN ROSEWOOD (DALBERGIA NEGRA)

To comply with CITES Regulations on post-1947 furniture made of Brazilian Rosewood, all post-war rosewood furniture items have Article 10 certificates.

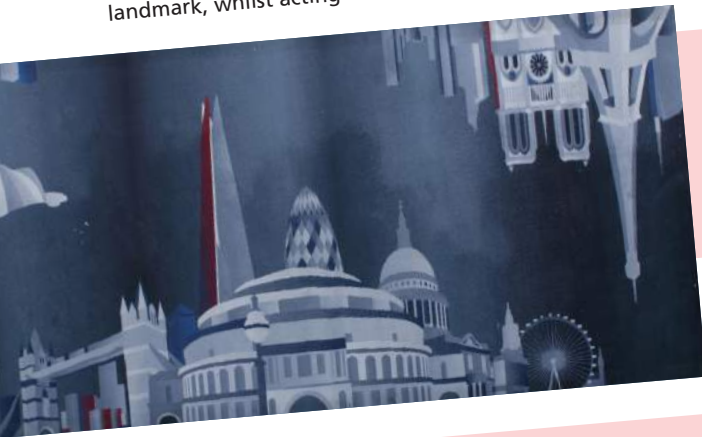
If you are purchasing rosewood furniture for commercial purposes and not solely for your own use, CITES regulations require you to obtain your own certificate. You would need to contact the Animal Health and Veterinary Laboratories Agency ('AHVLA') and, as part of the process of obtaining your document, it is a requirement that you have seen sight of the Sworders' certificate or are aware of its reference number.

It is therefore the responsibility of commercial buyers to ensure that they obtain a copy of the appropriate certificate, or the certificate reference number, after purchase from Sworders Fine Art Auctioneers.

For confirmation of the certificate number, please refer to our website (www.sworder.co.uk).

Lots 366 to 374

In 2013, LINLEY furniture makers and Brintons carpet manufacturers collaborated to produce a 180-metre carpet for London's Burlington Arcade. The focus was to welcome international visitors to the luxury landmark, whilst acting to showcase British creativity.



Lot 366

A Brintons' carpet section from the Burlington Arcade, designed by LINLEY featuring landmarks of London and Paris, including the Royal Albert Hall, the Shard, the Gherkin and the London Eye, the top section with Notre Dame and the Eiffel Tower, 201 x 492cm
£300 - 500



Lot 367

A Brintons' carpet section from the Burlington Arcade, designed by LINLEY and featuring South East Asian landmarks including Hong Kong skyscrapers, 201 x 297cm
£250 - 300



Lot 368

A Brintons' carpet section from the Burlington Arcade, designed by LINLEY featuring Berlin landmarks including the Reichstag and the Fernsehturm, 201 x 248cm
£200 - 300



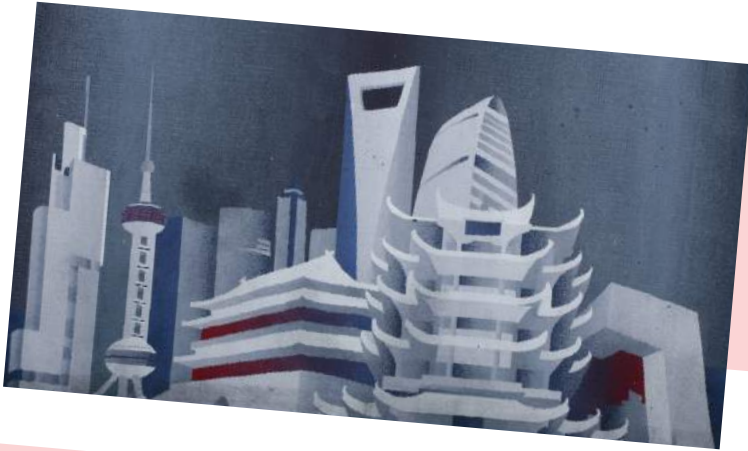
Lot 369

A Brintons' carpet section from the Burlington Arcade, designed by LINLEY furniture, featuring Middle Eastern landmarks including Dubai and the Burj Khalifa, 201 x 450cm
£300 - 500



Lot 370

A Brintons' carpet section from the Burlington Arcade, designed by LINLEY furniture featuring Indian landmarks including the Taj Mahal and Imperial II towers, 201 x 314cm
£200 - 300



Lot 371

A Brintons' carpet section from the Burlington Arcade, designed by LINLEY furniture featuring Chinese landmarks including the Forbidden City in Beijing and skyscrapers in Shanghai, 168 x 266cm
£200 - 300

Lot 372

A Brintons' carpet section from the Burlington Arcade, designed by LINLEY furniture featuring Kuala Lumpur landmarks and the Petronas Towers, with the Sydney Opera House and Harbour Bridge to the top section, 201 x 357cm, and another small section of carpet, 167 x 198cm (2)
£200 - 300



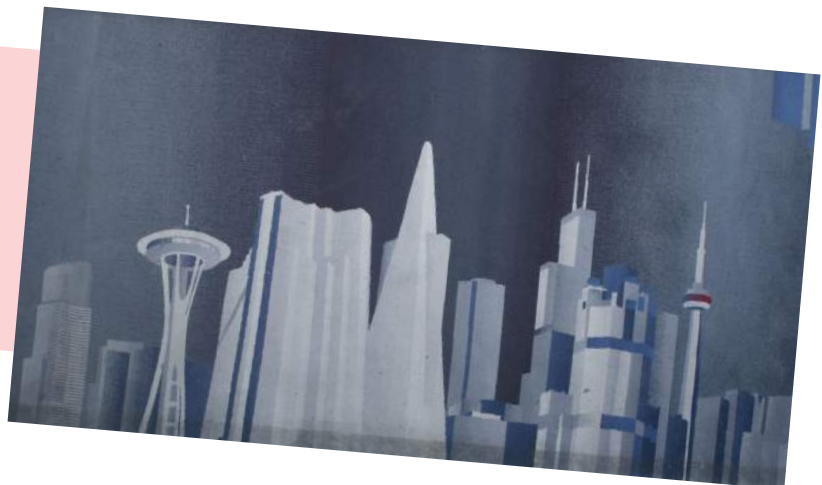
Lot 373

A Brintons' carpet section from the Burlington Arcade, designed by LINLEY Furniture featuring Indian landmarks including the Imperial II towers and the Taj Mahal, 201 x 304cm
£200 - 300



Lot 374

A Brintons' carpet section from the Burlington Arcade, designed by LINLEY Furniture, featuring North American landmarks including the Seattle Space Needle, Chicago Willis Tower and the Transamerica Pyramid in San Francisco, 201 x 309cm
£300 - 500





375

Lot 375 S

A Merrow Associates' rosewood and chrome desk, designed by David Folker, c.1970, with a single side drawer, 122cm wide
58cm deep
73cm high
£800 - 1,000



376

Lot 376

A German earthenware plaque, c.1970, in tones of red and brown, moulded in relief with stylised gymnasts, bearing an indistinct inscription in German to the reverse detailing its presentation 'to Henri...by the members of the Soest Turnverein, Christmas 1970', with a Schreibwaren Streiter retail label, 33 x 33cm
£200 - 300



377



377 detail

Lot 377

A pair of side tables, after a design by Piero Fornasetti, the circular glass tops painted with a girl smoking a cigarette, 55cm diameter
62cm high (2)
£250 - 350

Lot 378

'Alphabet and Image' magazine, 8 issues, complete set, 80pp each, J Shand, Shenval Press, Spring 1946 to December 1948, 1st Edns. Plates. First 4 in plastic spiral binding as issued; *fine*; 'Image' magazine, 6 of 8 issues: 1-4, 7 & 8, 1949 on. Original wrappers, as issued, *fine* (14)
£100 - 150



378



379

Lot 379

A Jaeger 'Recital' desk clock, mid-20th century, with an amber-coloured celluloid square case, 8cm wide
8.5cm high
£150 - 200



380



381

Lot 380

Two chrome semi light pendants,
designed by Claus Bonderup and Thorsten Thorup,
46.5cm diameter (2)
£150 - 200

Lot 381

Three semi light pendants,
designed by Claus Bonderup and Thorsten Thorup,
in ivory, white and red,
47cm diameter (3)
£100 - 150



382

Lot 382

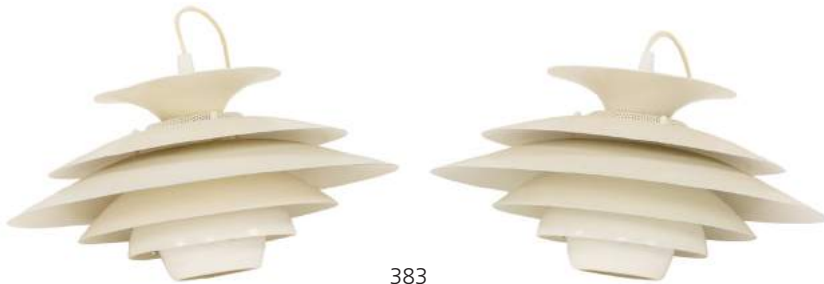
A set of four Danish brown enamelled hanging
light pendants,
48cm diameter (4)
£100 - 150

Lot 383

A pair of Louis Poulsen
PH5-style pendant lamps,
in white,
40cm diameter (2)
£80 - 120

Lot 384

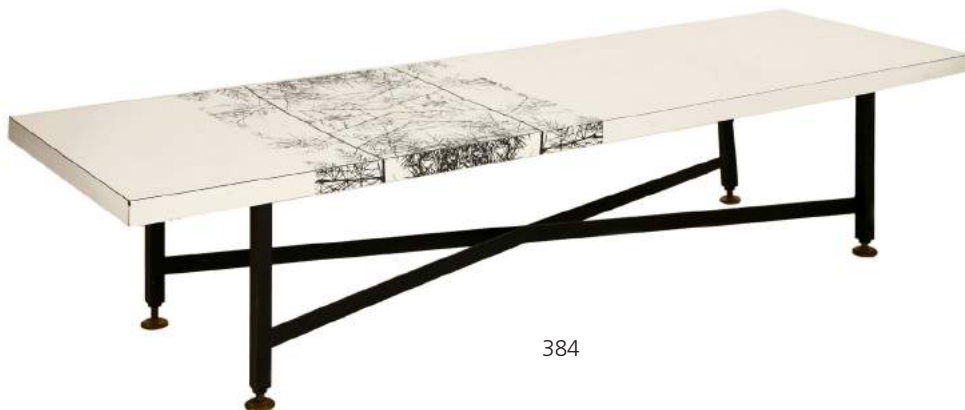
A lithographed coffee table,
designed by Terence Conran,
on a black stand,
168cm wide
50.5cm deep
39cm high
£150 - 200



383

Lot 385

An Habitat 'Maclamp',
designed by Terence Conran,
51cm high
£100 - 200



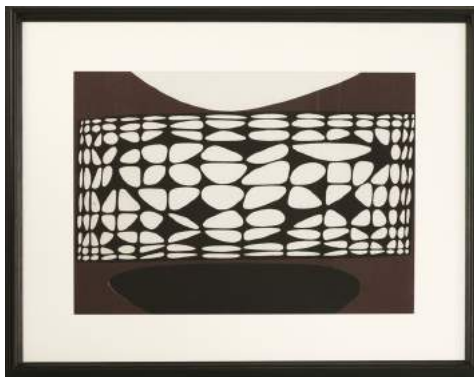
384



385



386



387



388



389

Lot 386
'Figures from a Cretan Seal',
 a screenprint on cotton, designed by John
 Piper in 1957 for David Whitehead Ltd.,
 38 x 55cm, mounted and framed
 £200 - 300

Lot 387
'Kernoo',
 a screenprint on cotton, designed by
 Victor Vasarely in 1962 for the Edinburgh
 Weavers,
 42.5 x 57.5cm, mounted and framed
 £300 - 500

Lot 388
'The Glyders',
 a screenprint on Sanderson fabric,
 designed by John Piper in 1960 for
 Sanderson & Sons,
 50 x 40cm, mounted and framed
 £200 - 300

Lot 389
A Ladderax wall unit,
 designed by Robert Heal for Staples,
 1960s, comprising:
 10 ladder uprights,
 1 single upright,
 3 chests,
 3 cupboards, *one with glass*,
one with a panel, one without,
 a secretaire cupboard,
 4 shelves,
 a reading shelf,
 2 corner shelves, and
 7 quarter length shelves,
 200cm high
 £700 - 1,000

Lot 390
A Ladderax low wall unit,
 designed by Robert Heal for Staples,
 1960s, comprising:
 8 low ladders,
 110cm high
 35.5cm deep,
 with 14 shelves,
 20cm deep
 £250 - 350



390



391

Lot 391

***Enzo Plazzotta (1921-1981),**
'Isadora Relief', 1970, a bronze relief,
 numbered '1/9' on a shield,
 78 x 66cm,
 with a copy of the catalogue raisonné, 1986
£1,000 - 1,500

Literature: Illustrated in Enzo Plazzotta
 catalogue raisonné, no. 127, p.66.

Lot 392

A Gordon Russell walnut dining suite,
 retailed by Heal's, *labelled*, comprising:
a table,
 with one extra leaf,
 143.5cm long, 184cm extended
 90cm wide
 74.5cm high,
eight dining chairs,
 (6+2), and
a sideboard,
 with sliding panels,
 137.5cm wide
 45.5cm deep
 82cm high,
together with an ash bookcase
 137cm wide
 30cm deep
 67.5cm high (11)
£200 - 300

Lot 393

A Calligaris 'Mascotte' cherrywood table,
 with a folding top, ratchet stand, with
 wheels to one end, *labelled*,
 105cm wide
 70cm deep
 58.5cm adjustable
£150 - 250



393



392
bookcase and sideboard



392

Lot 394

A pair of cast iron candle trees,
 designed by Jens Harald Quistgaard for Dansk,
 47cm high (2)
£100 - 150



394



395

Lot 395
'Mandarin',
 an handprinted cotton
 fabric panel, designed
 by Linda Harper for Hull
 Traders,
 126 x 280cm
 £100 - 150

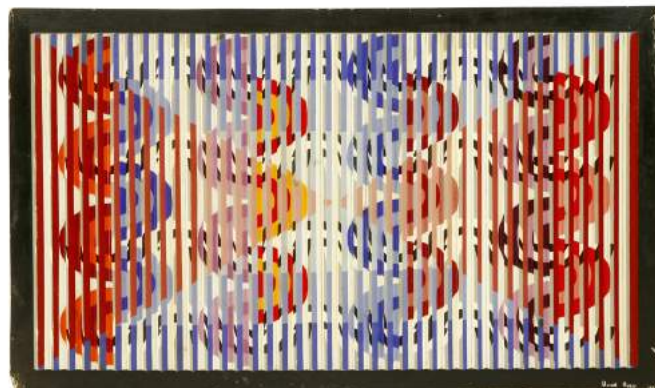


396

Lot 396
***Suzy Aczél** (Hungarian,
 d.2002),
 'Seesaw', bronze, from an
 edition of seven, *signed and*
dated '87, on a wood plinth
 25cm long
 £200 - 300

Exhibited:
 Royal Academy Summer
 Exhibition, 1987.

Lot 397
Daniel Russo
 (contemporary)
 LIFE PUZZLE, 1973
 Acrylic on assembled wood
 panels,
 135.5 x 75cm
 £200 - 400



397

Lot 399
 A pair of pink concave lounge settees,
 by Thayer Coggin, each with a low button back, raised on tapering
 chrome legs with ball feet, *labelled 'Thayer Coggin'*,
 250cm wide
 backs 80cm high
 seats 50cm high (2)
 £500 - 700

Lot 400
 An Olivetti
 Valentine
 typewriter,
 designed by
 Ettore Sottsass
 (1917-2007),
lacking case
 £100 - 150



400



398

Lot 398
Armand Pierre Fernandez
 (French, 1928-2005),
 Untitled, Fipa D'or, Cannes
 1991, a bronze sculpture,
 from an edition of 20 and
 10, awarded to Vanessa
 Redgrave in 1991 for
 'Opheus Descending
 - category Fiction -
 Interprétation Fémine',
incised signature,
 37.5cm high
 £800 - 1,200



399



401

Lot 401

An octagonal glass coffee table, 1970s, designed by Ringo Starr and Robin Cruickshank for Robin & Ringo Ltd. (ROR) raised on an octagonal chrome stand, 122cm diameter 37.5cm high
£150 - 200



402

Lot 402

A pair of leather club chairs, after a design by Le Corbusier, with barrel backs, 88cm wide 80cm deep 70cm high seat 42cm high (2)
£500 - 800



403

Lot 403

Three ash lounge chairs, originally designed by Gio Ponti and manufactured for the Hotel Parco dei Principi, 70.5cm wide 76cm deep 103.5cm high seat 39cm high (3)
£800 - 1,200



404

Lot 404

An Italian maple side table, with a circular glass top, 67cm diameter 53.5cm high
£250 - 350



406

Lot 405

A rosewood finish cabinet, opening to reveal three shelves, the cupboards with shelves to the interior, 80cm wide 35cm deep 122cm high
£200 - 300



405

Lot 406

An Italian extending table, 1960s, with a tambour two-tone extending wood top, 106.5cm wide, 140.5cm extended 76.5cm deep 76cm high
£150 - 250

Lot 407

A French coffee table, with a tile top, by Roger Capron, with sixteen leaf-impressed tiles, *signed*, on a steel stand, 98cm wide 46cm deep 29.5cm high
£100 - 150



407



408



409



411



410

Lot 408
A French painted-metal chandelier, in the form of a balloon with six lights, 61cm diameter 68cm high
£100 - 150

Lot 409
A pair of chrome side chairs, 1970s, with bar backs, raised on three legs, 55cm wide seat 42cm high (2)
£150 - 250

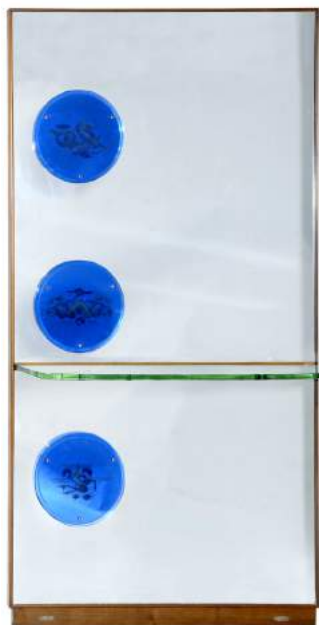
Lot 410
A Ladderax wall unit, designed by Robert Heal for Staples, 1960s, comprising: 3 ladder sections, with 3 shelves, a secretaire cupboard, a glass-fronted cupboard, and 3 drawers, 277cm wide 37cm deep 200cm high
£300 - 500



413

Lot 411
A French painted-metal five-light ceiling light, 76cm diameter
£150 - 200

Lot 412
A massive glass wall mirror, possibly by FontanaArte, mounted with bevelled blue glass illuminated roundels, with mermaids, fish and seahorses, and a shelf, the underside with star motifs, 112cm wide 25cm deep 218cm high
£500 - 700



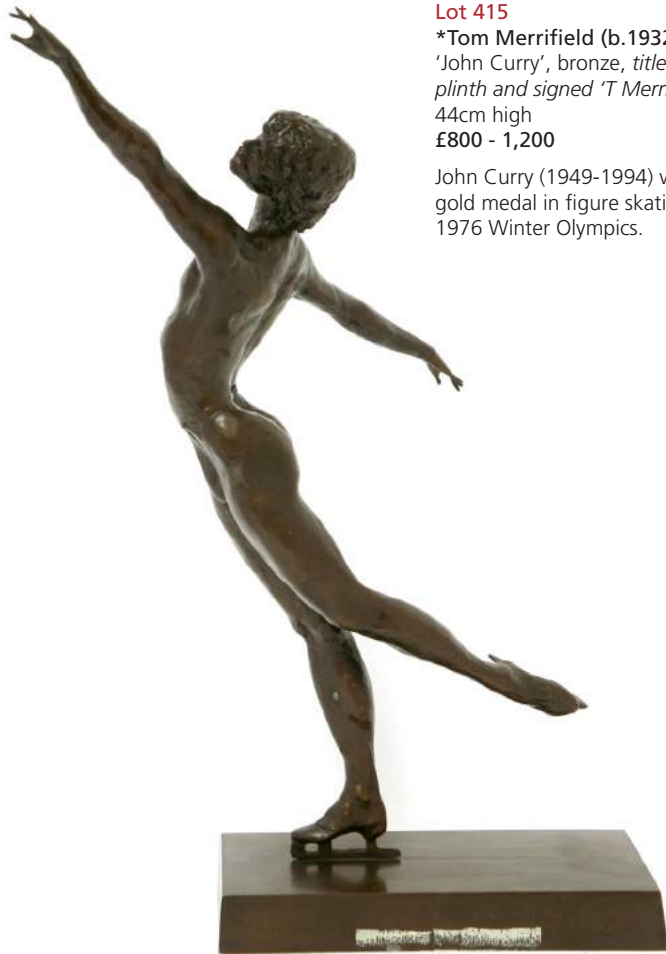
412

Lot 413
A Danish teak dining table, the centre inset with tiles, 160cm long 90cm wide 70cm high, and four dining chairs (5)
£150 - 250

Lot 414
A J16 rocking chair, designed by Hans Wegner in 1944, stamped 'FD Møbler' and dated 1962, with a woven cord seat
£250 - 350



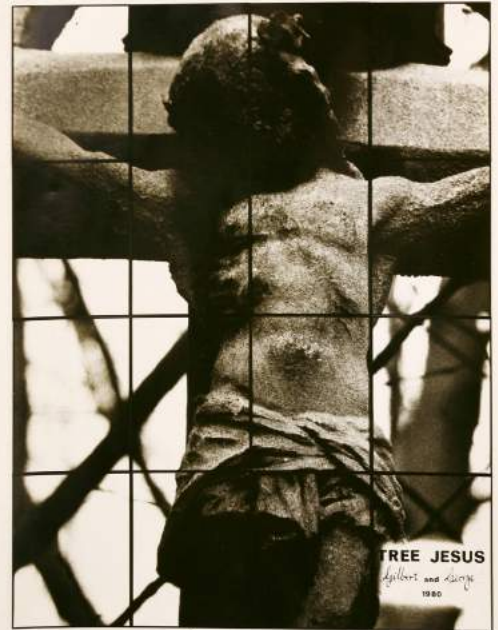
414



Lot 415
***Tom Merrifield (b.1932),**
'John Curry', bronze, titled on
plinth and signed 'T Merrifield A/C',
 44cm high
 £800 - 1,200

John Curry (1949-1994) won the gold medal in figure skating at the 1976 Winter Olympics.

415



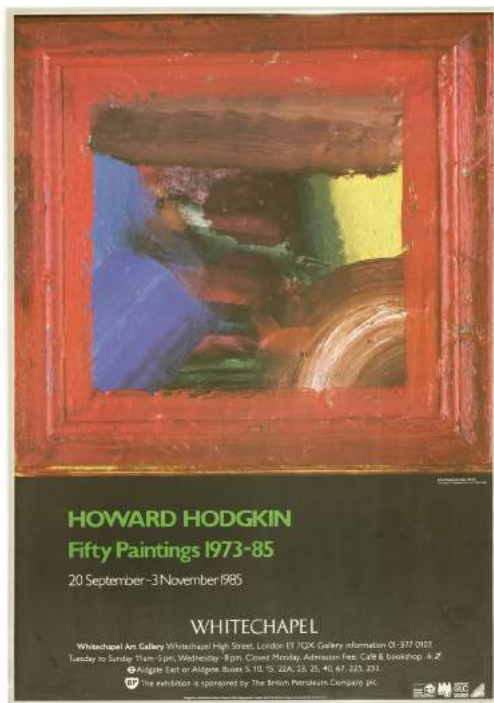
417

Lot 417
***Gilbert and George (b. 1943 and 1942)**
'TREE JESUS', 1980
 Photograph
 20.5 x 25.5cm
 £100 - 150

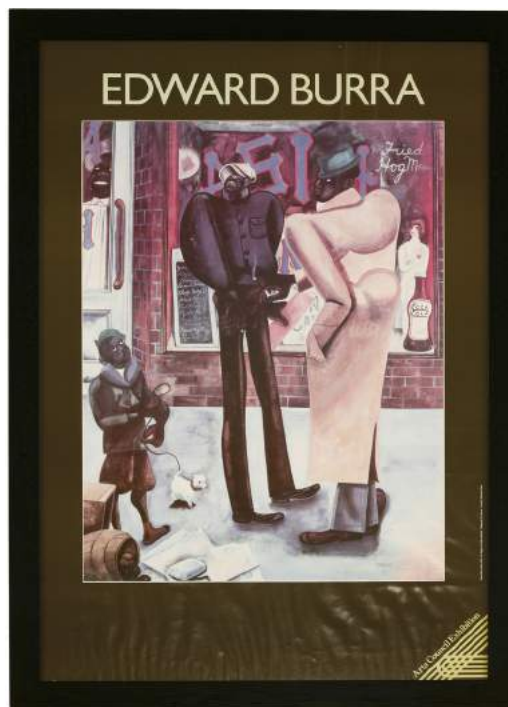


Lot 416
***Tom Merrifield (b.1932),**
'John Curry', bronze, titled on plinth
and signed 'T Merrifield A/C',
 45.5cm wide
 30cm high
 £800 - 1,200

416



418



419

Lot 418

**'Howard Hodgkin Fifty
Paintings 1973-85',
an exhibition poster,
Whitechapel Gallery, 1985,
76.5 x 51cm, framed
£100 - 150**

Lot 419

'Edward Burra'
an Arts Council Exhibition
poster,
82.5 x 57cm, framed
£100 - 150



420

Lot 420

A pair of folding chairs,
modern, with fret cut frames, lithographic
printed with 18th century chair designs (2)
£150 - 200



421

Lot 421

A rocking chair,
designed by Fredrik Kayser, with a cane back,
some damage,
62cm wide
96cm deep
80cm high
£500 - 700

Lot 422

A pair of brass side tables,
with glass tops,
55cm square,
45cm high (2)
£150 - 200



422



423

Lot 423

A 670 and 671 lounge chair and ottoman,
designed by Charles and Ray Eames,
manufactured by Hille, with leather and walnut
veneered seats, leather worn and distressed,
labelled 'Made by Hille of London Ltd., Herman
Miller-Zeeland-Michigan, Charles Eames Design' (2)
£1,000 - 1,500



424

Lot 424

An Aldo Tura lacquered parchment
games box,
lithographed with card designs,
enclosing cards and coloured
counters,
30.5cm wide
17cm deep
5.5cm high
£100 - 150

**Lot 425**

A Danish three-seater settee,
in the style of Børge Mogensen, with
a beech frame and with olive and
off-white upholstery,
162cm wide
75cm deep
75cm high
seat 42cm high
£300 - 500



425



426

Lot 426

An Italian three-piece suite, 1960s, with upholstered brown fabric, a beech frame and gilt-mounted sabot feet, armchair 102cm wide 85cm deep 80cm high seat 44cm high settee 214cm wide (3) £1,000 - 1,500

Lot 427

An Italian walnut and parchment-mounted dressing table, with turquoise panels, 140cm wide 43cm deep 62cm high, and a matching stool, 61cm wide (2) £200 - 300

Lot 428

An Italian glass and marble coffee table, with a central hole to the smoked glass top, on a marble plinth, 104.5cm square 30cm high £250 - 350



427



428

Lot 429

A Jaeger-LeCoultre 'Atmos' clock, with a brass case with five glazed panels and a white circular dial, with dagger and Arabic numerals, serial number '364824', 23.5cm high £400 - 600

Lot 430

A pair of ash lounge chairs, originally designed by Gio Ponti and manufactured for the Hotel Parco dei Principi, 70.5cm wide 76cm deep 103.5cm high seat 39cm high (2) £700 - 900



430

Lot 431

A pair of ash lounge chairs, originally designed by Gio Ponti and manufactured for the Hotel Parco dei Principi, 70.5cm wide 76cm deep 103.5cm high seat 39cm high (2) £700 - 900



431



429



432



433

**Lot 432 §**

A Danish rosewood nest of tables, each with tiled blue tops, 57.5cm wide 36.5cm deep 52cm high £150 - 200



434

Lot 433

Three contemporary bar stools, 85cm high (3) £100 - 150

Lot 434

A model of Timossi Ferrari's Hydroplane 'Arno X1', a detailed model of Achille Castoldi's 1953 world water speed record-breaking boat, 91cm long, on a stand (2) £300 - 500

Lot 435

A Jaeger-LeCoultre perspex and gilt metal skeleton table clock, 20th century, with baton numerals, on a rectangular base, *stamped '419' to the underside*, 14.5cm diameter £200 - 400



435

Lot 436

A beech-framed lounge suite, 1970s, with light green upholstered seats and backs, settee 165cm wide armchair 64cm wide (3) £250 - 350



436



437

Lot 437

An Eames EA 219 office chair, with a tan leather seat, on a revolving stand, labelled 'Herman Miller', the stand cast 'Ring Mobelfabrik' £150 - 200

Lot 438 §

A Danish rosewood dining table and six chairs, designed by Hans Olsen for Frem Rojle, branded, 106cm diameter 156cm extended (7) £600 - 800



438



439

Lot 439

A pink-tinted coffee table, raised on tapering supports, 66cm wide 42cm deep 50cm high £100 - 150



441

Lot 440

A Danish teak desk, in the style of Arne Vodder, the shaped top with three drawers to the side, 144cm wide 103cm deep 70cm high £250 - 350

Lot 441

A teak wall mirror, of lozenge form, with a rope suspension, 43cm wide 92cm high £100 - 150



440

§ FURNITURE MADE OF BRAZILIAN ROSEWOOD (DALBERGIA NEGRA)

To comply with CITES Regulations on post-1947 furniture made of Brazilian Rosewood, all post-war rosewood furniture items have Article 10 certificates.

If you are purchasing rosewood furniture for commercial purposes and not solely for your own use, CITES regulations require you to obtain your own certificate. You would need to contact the Animal Health and Veterinary Laboratories Agency ('AHVLA') and, as part of the process of obtaining your document, it is a requirement that you have seen sight of the Sworders' certificate or are aware of its reference number.

It is therefore the responsibility of commercial buyers to ensure that they obtain a copy of the appropriate certificate, or the certificate reference number, after purchase from Sworders Fine Art Auctioneers.

For confirmation of the certificate number, please refer to our website (www.sworder.co.uk).

Lot 442

***Stojan Batic (Slovenian, 1925-2015),**
'Builders', a signed, silvered metal panel,
 64.5cm wide
 178.5cm high
 £5,000 - 7,000

Provenance: W Pollak, Brussels;
 thence by descent.

Stojan Batic (1925-2015) was educated in Trbovlje at a mining school and went on to work as a technical draughtsman in the Trbovlje mine. In 1943, he became a war correspondent, but after the war he enrolled at the Academy of Fine Arts in Ljubljana. He became President of the Slovenian Artists' Association in 1960 and undertook many monumental commissions for public works in Slovenia and the former Yugoslavia.



442



443

Lot 443 S

A Danish rosewood dining table,
designed by Niels O Moller for J L Moller, *labelled*,
123cm diameter, extended 146cm
74cm high
£500 - 700



444

Lot 444 S

Five Danish rosewood model 78 dining chairs,
designed by Niels O Moller,
50cm wide
50cm deep
78cm high (5)
£1,000 - 1,500



445

Lot 445

A nest of three brass tables,
60.5cm wide
35cm deep
46cm high (3)
£150 - 200



446

Lot 446

A pair of Italian wall lights,
c.1960, by Stilnovo, with glass
cube form shades,
25cm deep
20cm high (2)
£150 - 200

Lot 447

A glass coffee table,
raised on a lucite 'X' frame stand,
120cm wide
80cm deep
40.5cm high
£150 - 200

Lot 448

A pair of tubular chairs,
after Charlotte Perriand, with
slung leather seats (2)
£100 - 200



447



448



449



450



451



452

Lot 449

A set of six Italian dining chairs, 1950s, labelled by Consortio Sede Friuli (6) £300 - 500

Lot 450

A Danish oak armchair, designed by Arne Vodder for Sibast Furniture, labelled and with 'Danish Furniture Makers' Control' label, 64cm wide 59cm deep 79cm high £200 - 400

Lot 451

A Danish J16 rocking chair, designed by Hans Wegner in 1944, with a woven seat £250 - 350

Lot 452

An Italian teak wall mirror, of lozenge form, with a leather strap suspension, 41cm wide 87cm high £100 - 150

Lot 453

A Danish teak side table, designed by Hans C Andersen, with a black top, branded, 36.5cm diameter 45cm high £80 - 120



453

Lot 454

*Ulrico Schettini (Italian, b.1932) ABSTRACT, 1959, Signed and dated 'London 1959' verso, oil on canvas 101 x 152cm £400 - 600



454



455

Lot 455

A 652 U1/2 armchair,
designed by Jens Risom for Knoll, with the original fabric, worn,
labelled 'Knoll Associates Inc 601 Madison Avenue, New York 22 NY',
61cm wide
70cm deep
74cm high
seat 41cm high
£400 - 600

This item has been on loan at the London Design Museum since 1993.

The vendor's father Johan Polak (1924-1995) worked for the United Nations as a publicity design officer. The Risom and Eames chairs in lots 456 and 457 were all bought in Philadelphia in 1949 whilst he was employed by N W Ayer & Son Inc., one of America's oldest advertising agencies. These have been in various exhibitions including 'History of Modern Design: In the Home' 2004, 'Designing Modern Life' 2005, and 'This Is Design' 2012.



456 in situ



456

Lot 456

A 652 armchair,
designed by Jens Risom for Knoll Associates in 1943, with an
unstained webbed seat and birch frame, *labelled 'Knoll Associates Inc.,*
601 Madison Avenue, New York 22 NY',
61cm wide
70cm deep
74cm high
seat 41cm high
£400 - 600

This item has been on loan at the London Design Museum since 1993.
The vendor, Johan Polak, lived in Philadelphia and worked for the
United Nations as a graphic artist.

Lot 457

A DCW chair,
designed by Charles and Ray Eames for Herman Miller in 1946,
labelled 'Charles Eames design Herman Miller Zeeland Michigan',
and another,
the seat back detached (2)
£400 - 600

These chairs have been on loan at the London Design Museum since
1993. The vendor, Johan Polak, lived in Philadelphia and worked for
the United Nations as a graphic artist.



457

Lot 458

A Louis Poulsen PH5 hanging pendant light,
designed by Poul Henningsen, in purple with
a blue reflector,
48cm diameter
£150 - 200



458

Lot 459

A Le Corbusier LC4 chaise longue,
modern, after the original, with black leather
upholstery,
160cm long
£150 - 300



459

Lot 460

A 'Saffo' table lamp,
designed by Angelo Mangiarotti for
Spa Artemide, Italy,
34cm high
£800 - 1,200



460



461

Lot 461

A Tergonomic low stool,
by Atelier Fornasetti, 2007, *labelled
and numbered 'N1, 2009'*,
46cm high
£400 - 600



463

Lot 462

A 'Mani' umbrella stand,
by Atelier Fornasetti, 2009, *labelled
and numbered 'N.18, 2009'*,
57cm high
£600 - 800



462



464

Lot 463

A 'Black Sun' tray,
by Atelier Fornasetti, 2009, *labelled
and numbered 'N.9, 2009'*,
41cm diameter
£200 - 300

Lot 464

Four cushions,
by Atelier Fornasetti,
38cm square (4)
£100 - 150

Lot 465

A pair of
'Tergonomico'
low stools,
by Atelier Fornasetti,
2009, labelled and
numbered 'N.3' and
'N.7', 2009;
46cm high (2)
£800 - 1,200



465

Lot 466

A 'Tergonomico'
bar stool,
by Atelier Fornasetti,
2009, labelled and
inscribed 'N.12, 2009',
78cm high
£600 - 900



466

Lot 467

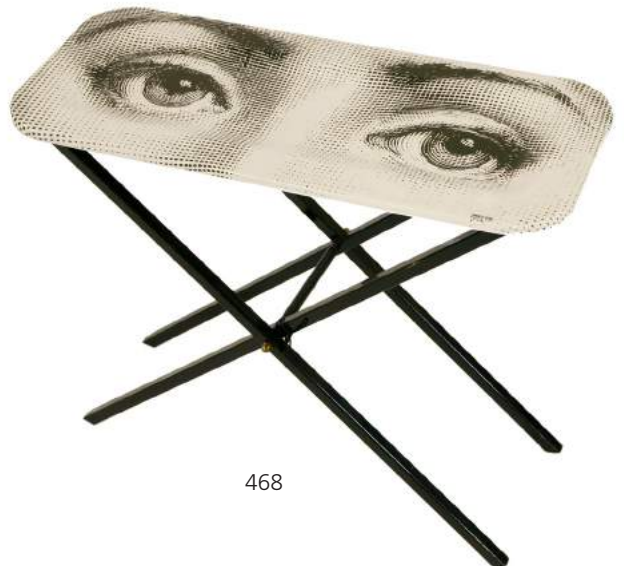
A 'Sun' stool,
by Atelier Fornasetti, 2007,
labelled and numbered
'U.27/2007',
70cm high
£600 - 900



467

Lot 468

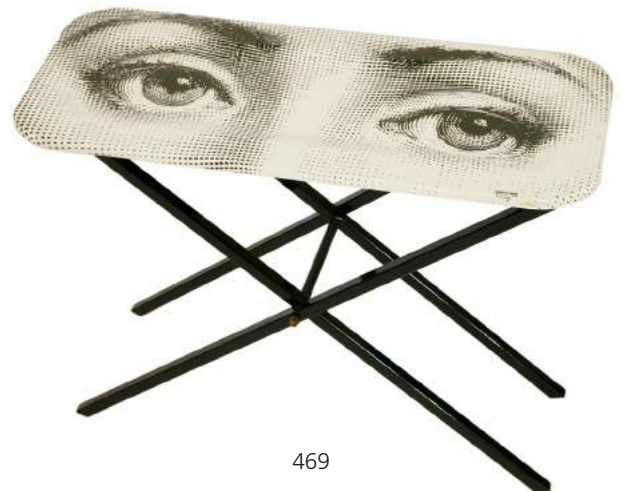
An eye tray,
by Atelier Fornasetti, 2009,
labelled and numbered
'N11, 2009', on a folding
stand (2)
£300 - 500



468

Lot 469

An eye tray,
by Atelier Fornasetti, 2009,
labelled and numbered
'N.2, 2009',
58.5cm wide
25cm deep, on a folding
stand (2)
£300 - 500



469





470



471



472



473



474

Lot 470

*Graham Clucas (contemporary)
'RAIN'
Silkscreen print, signed and titled in pencil '67,
artist's proof
77 x 59cm
£100 - 150

Lot 471

R...Nott
ABSTRACT
Screenprint, signed and numbered 1/10
35 x 53.5cm;
Alistair Grant
AZINCOURT II
Screenprint, signed and numbered 50/50
25 x 32.5cm, and
Mervyn Romans
GAMES, 1969
Etching and aquatint, signed and titled and
dated in pencil
45 x 40cm (3)
£150 - 200

Lot 472

Joe Rose (Australian, 1915-1999)
ABSTRACT
Signed l.r., mixed media
90 x 122cm
£200 - 300

Lot 473

*Jules de Goede (Dutch, 1937-2007)
ABSTRACT
Signed and dated '81, pen and ink
35 x 32cm, mounted and framed
£200 - 300

Lot 474

Randi Kjekstad Bull
(Norwegian-American, 1915-2015)
'THE BRIDGE'
Woodcut print, signed titled artist's proof
51 x 34cm, mounted and framed
£100 - 150

Lot 475

*Trevor Thomas (1907-1993)
 ABSTRACTS
 Two, gouache, both signed,
 44 x 29cm and 53 x 37cm (2)
 £200 - 300



475

Lot 476

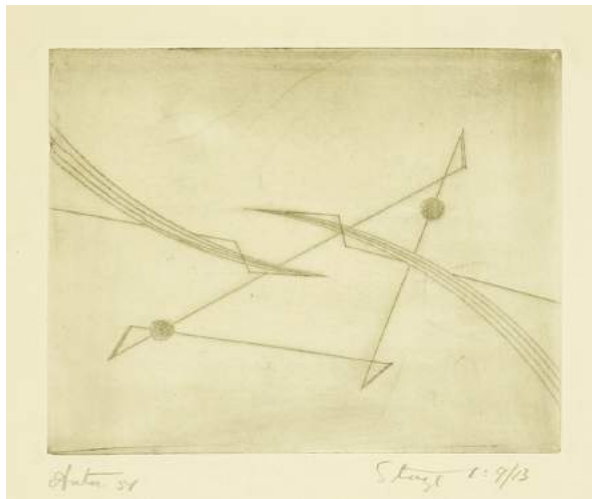
*Victor Anton (1909-2002)
 STAGE 1
 Etching, 1951, signed and
 inscribed and numbered 9/13
 in pencil
 8.5 x 10cm
 £100 - 150

Lot 477

*Martin Ware (b.1946)
 TOWER TRIPTYCH
 Aquatint, signed, titled and
 number 26/150, in pencil
 55 x 48cm
 £120 - 150

Lot 478

*John Wragg (b.1937)
 TRANSFORMATION
 Etching, signed and titled in pencil,
 artist's proof
 45 x 60cm
 £100 - 150



476



477

Lot 479

Warren King (contemporary)
 'RIVERBANK 2016'
 Signed to reverse and with artist's
 stamp
 61 x 61cm, framed
 £200 - 300



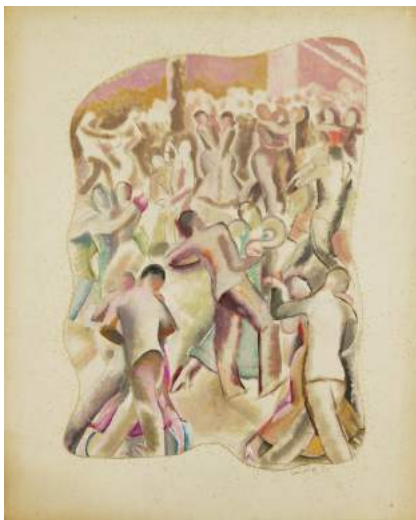
478



479



480 one of a pair



481 one of a pair

Lot 480

*George Frederick Hinchcliff (1894-1962)
STILL LIFE STUDIES
Two, both signed and dated '37, gouache
56 x 47cm (2)
£150 - 200

Lot 481

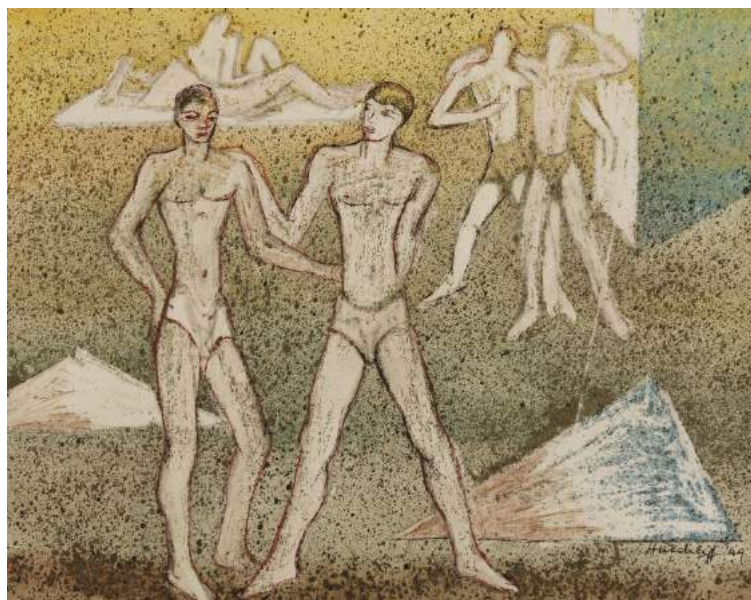
*George Frederick Hinchcliff (1894-1962)
DANCING;
SPORTS
One signed and dated '37, gouache and
mixed media
52 x 37cm approximately (2)
£150 - 200

Lot 482

*George Frederick Hinchcliff (1894-1962)
STUDY OF FIGURES,
Signed l.r., gouache
26 x 25cm
£150 - 200



482



483



484 one of a pair

Lot 483

*George Frederick Hinchcliff (1894-1962)
ADOLESCENT PARALLELS,
a mural design, 1949,
signed and dated,
watercolour, ink and
wax resist,
24 x 29cm
£150 - 200

Lot 484

*George Frederick Hinchcliff (1894-1962)
'ORIGINS OF FORMS';
'DIMINISHING FORMS', 1949
Both signed and dated, watercolour, ink
and wax resist
24 x 29cm (2)
£150 - 250

Lot 485

'Weegee', Arthur Fellig
(Austrian-American, 1899-1968)
SURREALIST NUDE
Photograph, mounted and framed,
stamped 'please credit Weegee
from photo-representatives'
18 x 8.5cm
£200 - 300



485

Lot 486

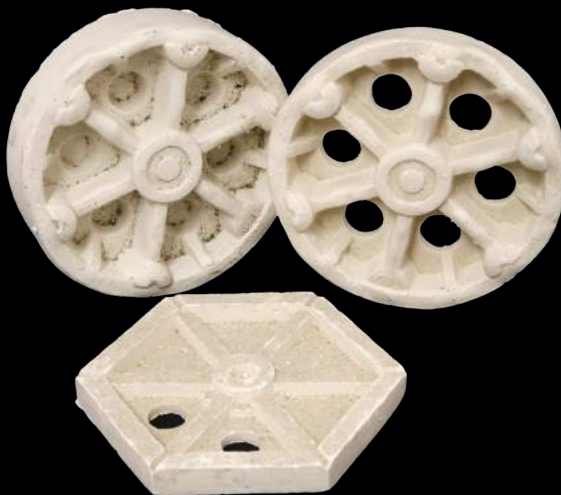
Edward Steichen
(American, 1879-1973)
'THE DE MARCOS'
Photograph exhibited at the ICP
Exhibition 'Fleeting Gestures,
Treasures of Dance, photography',
with further labels
25 x 20cm
£200 - 300



486

Lot 487

*Sir Eduardo Paolozzi
(1924-2005),
three plaster maquettes, each
modelled as gears or cogs,
largest 14cm diameter
£100 - 150



487



489



488

Lot 488

*Mariele Neudecker
(German, b.1965),
'The World's Prime Meridian
(0100h-2400h)', 1997, a plaster
cast sculpture, from an edition of
24, in original box with certificate,
30.5cm wide
15cm deep
5cm high
£150 - 200

Lot 489

Fluxus newspaper,
(Fluxus cl Valise e Trange, March 1964),
edited by George Maciunas and
Henry Flynt, double-sided offset,
57 x 89cm
£250 - 350



490

Lot 490

***Bernard Leach (1887-1979),**
an hexagonal tall vase, with a grey glaze with
combed details, with studio repairs to firing
cracks, in gold Kintsugi by Kat Wheeler,
20.5cm high
£800 - 1,200

Provenance: Berkeley Collection, gifted to the
Leach Pottery by Geoffrey Walker
in memory of Harley Carpenter.

Exhibited: Leach Heritage Exhibition, 2016.



493

Lot 491

***Michael Casson (1925-2003),**
a large salt-glazed jug, with brushwork
motifs, *impressed 'MC' monogram*,
31cm high
£150 - 200

Lot 492

***Michael Casson (1925-2003),**
a tall saltglazed jug, with brushwork motifs
and horizontal banding, raised on lug feet,
impressed 'MC' monogram,
35cm high
£150 - 200

Lot 493

***Michael Casson (1925-2003)**
two saltglazed jugs, both with incised details,
impressed 'MC' monograms,
20 and 24cm high (2)
£150 - 200

Lot 494

***Michael Casson (1925-2003),**
a salt-glazed jug, with a blue-glazed body,
impressed 'MC' monogram,
28cm high
£100 - 150



491



492



494



495



497



496



498



499



501

Lot 495

***Michael Casson (1925-2003),**
a salt-glazed bowl,
with vertical motifs, on four lug feet,
impressed 'MC' monogram,
20cm wide, and
a goblet,
unsigned,
16cm high (2)
£100 - 150

Lot 496

***Michael Casson (1925-2003),**
a stoneware jug, with an incised rim, panelled
body, *impressed 'MC' monogram*,
25cm high
£150 - 200

Lot 497

***Michael Casson (1925-2003),**
a salt-glazed trough, with hoop handles
and feet, *impressed 'MC' monogram*,
43cm wide
£200 - 300

Lot 498

***Michael Casson (1925-2003),**
a salt-glazed bowl, with incised details,
loop handles, *impressed 'MC' monogram*,
23cm diameter, and
a salt-glazed teapot, with a blue glaze, a
twist handle and knob, on three twist feet,
unsigned (2)
£150 - 200

Lot 499

***Sheila Casson (b.1930),**
three salt-glazed jugs, each with different
applied motifs, *impressed monograms*,
tallest 12cm high (3)
£100 - 150

Lot 500

Michael Cardew (1901-1983),
a stoneware bowl, *impressed 'MC' monogram*
and *Wenford Bridge mark*,
11.5cm high, and
David Leach (1911-2005),
a lidded preserve pot and cover, *impressed*
monogram,
10cm high (2)
£70 - 90

Lot 501

***David Leach (1911-2005),**
a tenmoku glaze vase, with incised panels,
impressed 'DL' monogram,
13.5cm high
£100 - 150



502



503



504



505



506

Lot 502

*Richard Batterham (b.1936),
a monumental stoneware charger, with a pale green glaze, with combed rings and wipe to the centre,
55cm diameter
£600 - 800

Provenance: Maak 2013 Granberger Collection, Sweden.

Lot 503

A Gabriele Koch studio pottery vase, with a smoked glaze, rim chip,
22cm high,
a John Kershaw bowl, with applied handle,
25cm diameter, and
a Les Cole stoneware vase,
12.5cm high (3)
£120 - 180

Lot 504

*John Maltby (b.1936)
LARGE BOAT
a rectangular plaque, on a painted board,
signed and titled verso
30.5 x 18cm panel
44 x 34cm overall, framed
£450 - 550

Lot 505

*Ray Finch (1914-2012),
a stoneware charger, with a black/brown combed ground, *impressed mark*,
36cm diameter
£200 - 300

Lot 506

Takeshi Yasuda (Japanese, b.1943),
a green-glazed stoneware dish,
20cm wide
£200 - 300

Lot 507

Danlami Aliyu (Nigerian, 1952-2012)
a glazed stoneware vase, with a ribbed brown body, incised with decoration, and blue/white highlighted glaze, *impressed artist's mark*,
27cm high
£250 - 350



507



508

Lot 508

John Leach (b.1939),
Muchleney Pottery pieces, comprising:
a stoneware glazed flask,
2003,
19.5cm high,
a small flask,
1993,
11cm high,
a vase,
2004, of mallet form, with bronze and
ochre glazes,
16cm high, and
a teapot and cover,
21cm high (5)
£150 - 200



509

Lot 509

A Mike Dodd studio pottery vase,
15cm high,
together with two similar vases,
29 and 25.5cm high (3)
£100 - 200

Lot 510

A Mike Dodd studio pottery vase,
of faceted form with deep brown glaze,
34cm high, and
another similar,
25cm high (2)
£100 - 250

Lot 511

*Wally Keeler (b.1942),
a salt-glazed tall ewer,
33.7cm high
£300 - 500



510

Lot 512

*David Melville (contemporary),
a group of six studio pottery vases and jugs, with
impressed leaf decoration, *impressed monograms*,
highest 44cm (6)
£100 - 150

Lot 513

A large David Melville studio pottery jug,
with applied decoration,
33.5cm high,
with another smaller jug, and
a John Pollex slipware jug (3)
£100 - 200

Lot 514

A Flavia Montelupo pottery vase,
of waisted form, with vertical incised details,
impressed marks,
26.5cm high
£100 - 150



511



512



513



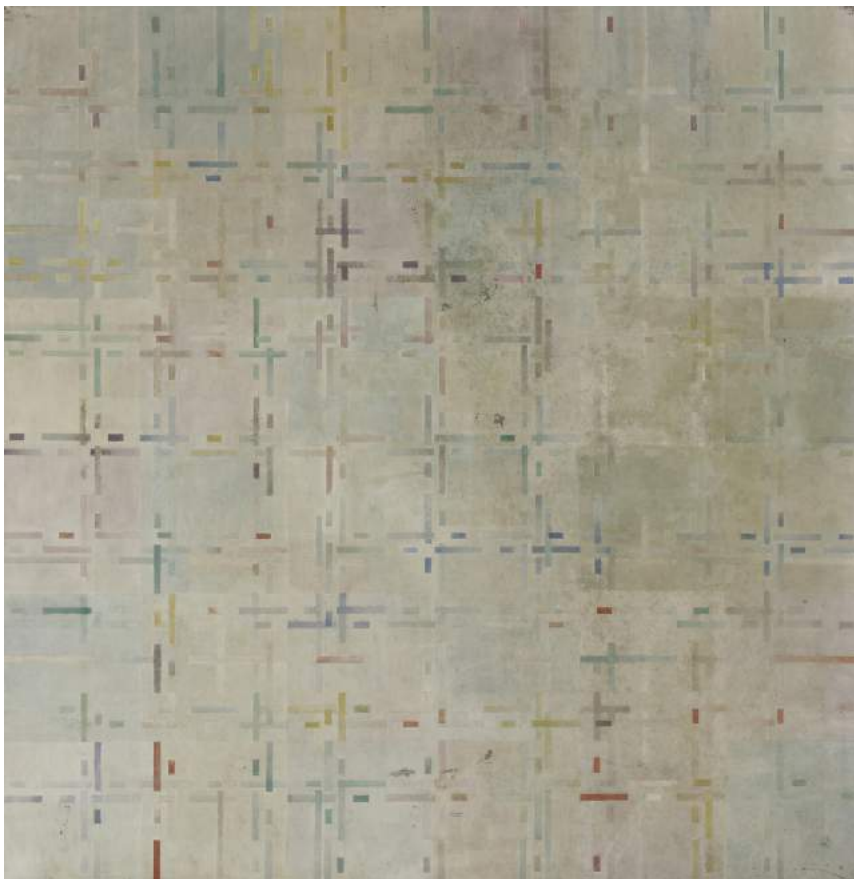
514



515



516



517

Lot 515

Norman Bell Geddes (American, 1893-1958)
PORTRAIT OF A GENTLEMAN, POSSIBLY ORSON WELLS,

Signed with initials in red l.r., and inscribed 'I'll be glad when you're dead you rascal', pastel, with a head study on the reverse
 53 x 53cm

£400 - 600

Lot 516

***David Hicks (1929-1998)**
'MRS DOMINIC ELWES'

Signed and dated 67, l.r., inscribed 'No. 9/MBM', with David Hicks' catalogue 'Portrait Drawings and Sculptural Objects 1967', inscribed for 'M S with love from David' (Mrs Bluey Mavrolean), pen and ink

32.5 x 31.5cm

£300 - 500

Lot 517

***Paolo Serra (Italian, b.1946)**
UNTITLED

Oil on canvas
 183 x 183cm, unframed

£300 - 500



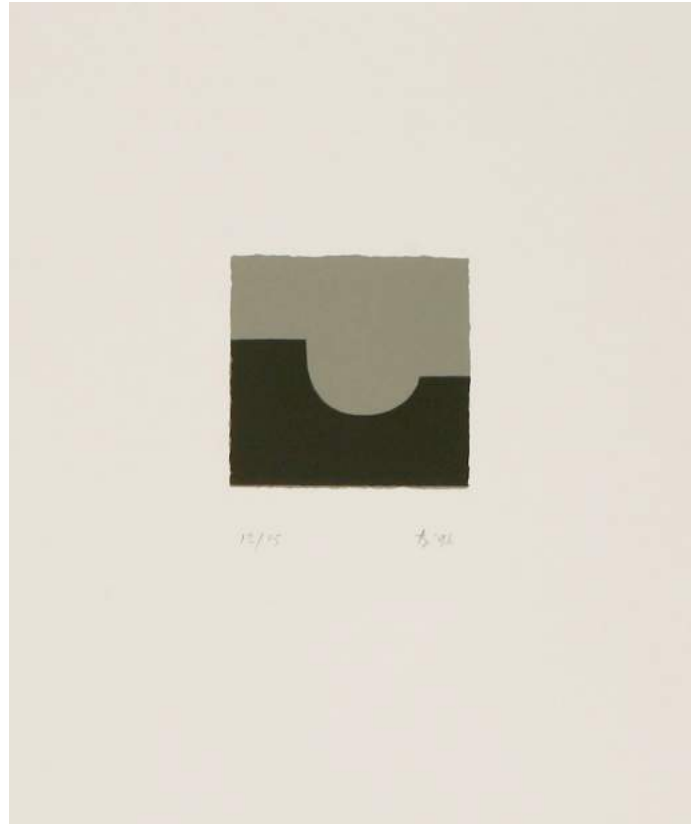
518

Lot 518***Brian Blow (1931-2009)**

UNTITLED

Signed and dated 1964 on backboard, oil on board
15 x 15.5cm

£150 - 250



519

Lot 519***Brian Blow (1931-2009)**

'GREY SUITE 3'

Two lithographs, signed with initials, dated '96 and numbered 12/15 and P/P
39.5 x 31cm;and another (3)
£150 - 200**Lot 520*****Brian Blow (1931-2001)**

UNTITLED

Two woodblock prints, signed with initials

50 x 39cm, mounted

£150 - 250

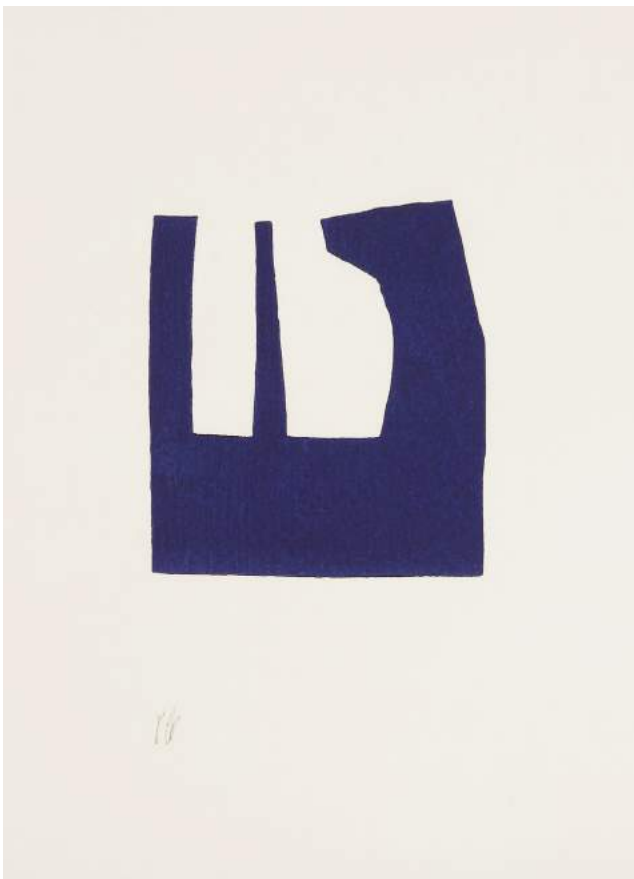
Lot 521**Josef Albers****(German-American, 1888-1976)**

'INTERACTION OF COLOUR', 1963

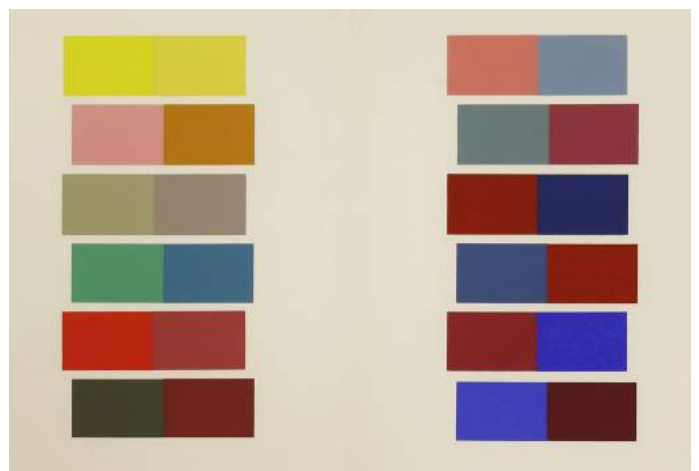
Screenprint

31 x 41cm, mounted and framed

£200 - 300



520



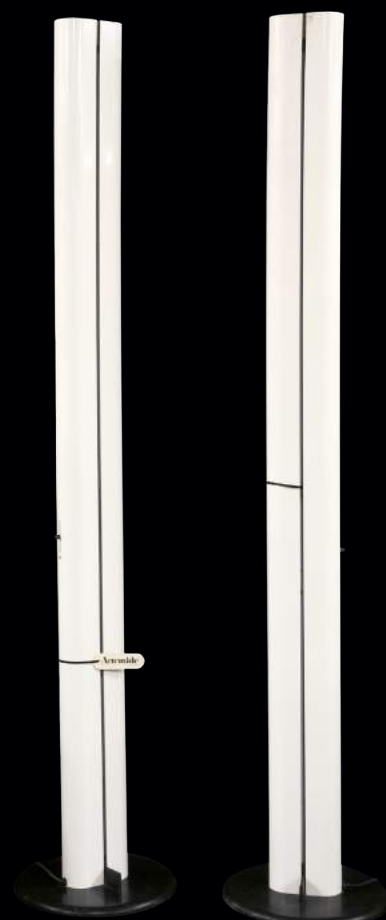
521



522

Lot 522
Two 'Tom Vac' chairs,
designed by Ron Arad for
Vitra (2)
£200 - 400

Lot 523
A pair of 'Megaron' freestanding floor
lights,
designed by Gianfranco Frattini for Artemide,
182cm high (2)
£250 - 350



523



524

Lot 524
Three French clear glass bowls,
mid-20th century,
largest 62cm wide (3)
£150 - 200

Lot 525
Two French clear glass bowls,
mid-20th century,
30cm diameter (2)
£100 - 150

Lot 526
Three French clear glass bowls,
mid-20th century,
largest 58cm wide (3)
£150 - 200



525



526



527

Lot 527
A Yamaha model C2 grand piano,
c.2013, serial number 5888308, in a bright
white lacquered case,
145cm wide
£3,000 - 5,000

Lot 528
Two chrome and glass ceiling lights,
each with glass block 'petals',
75cm high with six lights, and
56cm high with four lights (2)
£150 - 200

Lot 529
A pair of clear glass table lamps,
mid-20th century, of spiral form,
36cm high (2)
£150 - 200



528



529



530

Lot 530
Four clear glass bowls,
mid-20th century,
largest 75cm wide (4)
£200 - 300

Lot 531
A set of four wall lights,
20cm wide
9cm deep
32cm high,
a table lamp,
lacking one shade, and
a Poltrona Frau leather
top table,
63cm wide (6)
£100 - 150



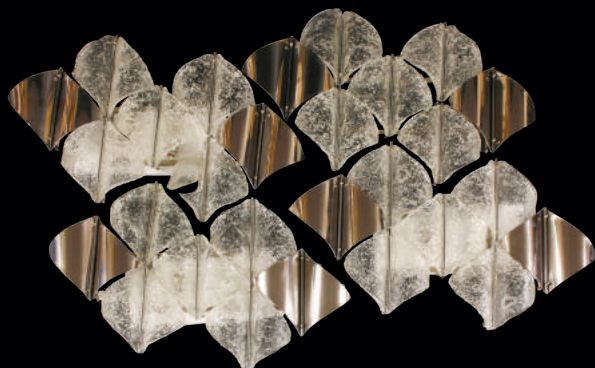
531



532



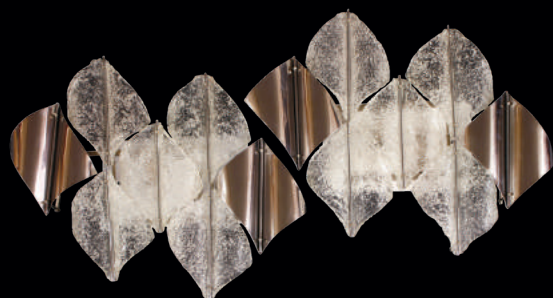
533



535



534



536

Lot 532

A pair of chrome wall lights, designed by Franco Albini for Sirrah, 40cm wide 50cm deep 40cm high (2) £250 - 350

Lot 535

Two pairs of Murano chrome and glass wall lights, attributed to Angelo Brotto for Esperia, 64cm wide 9.5cm deep 55cm high (4) £400 - 600

Lot 533

A pair of 'Pileino' table lamps, designed by Gae Aulenti in 1972 for Artemide, 24.5cm high (2) £150 - 250

Lot 536

A pair of Murano chrome and glass wall lights, attributed to Angelo Brotto for Esperia, 64cm wide 9.5cm deep 55cm high (2) £250 - 350

Lot 534

A Barcelona chair, modern, after the original design by Mies van der Rohe, 76cm wide 80cm deep 80cm high £200 - 300

Lot 537

Two pairs of Murano chrome and glass wall lights, attributed to Angelo Brotto for Esperia, 64cm wide 9.5cm deep 55cm high (4) £400 - 600



537



538



540



543



539



541

Lot 538

A pendant lamp,
designed by Pia Guidetti for Lumi,
55cm diameter
48cm high approximately
£300 - 500

Lot 539

A pair of Pierson chrome-framed loungers,
c.1970, with white buttoned leatherette
upholstery on tubular chrome supports, the
reclining mechanism activated by a lever to
the side, labelled 'Pierson, France' (2)
£250 - 350

Lot 540

An Italian glass light pendant,
designed by Carlo Mason for Mazzega, with
moulded glass petal shades
£150 - 200

Lot 541

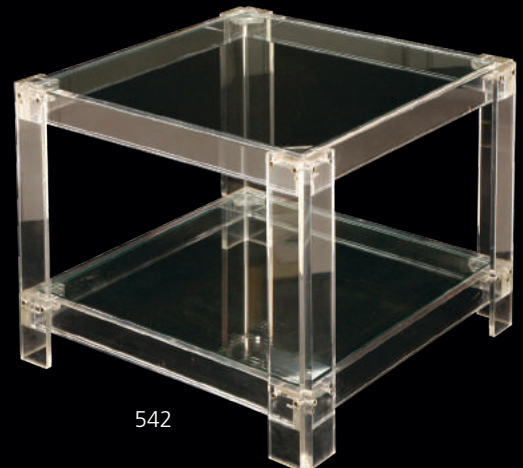
A ball chair,
after the original by Eero Saarinen, on a swivel
stand, upholstered in blue,
120cm high
£300 - 500

Lot 542

A lucite and glass side table,
50cm square
40cm high
£100 - 150

Lot 543

An Italian glass light pendant,
designed by Angelo Brotto,
43cm diameter
26cm high approximately
£200 - 300



542



544



547

Lot 544

*A Poole 'Atlantis' vase, designed by Jennie Haigh, numbered 'A205 Poole England', 21.5cm high
£80 - 120

Lot 545

A Wedgwood green vase, designed by Keith Murray, of ribbed globular form in green, printed facsimile signature and impressed marks, 16cm high
£100 - 150



545



548

Lot 546

Two Royal Copenhagen 'Baca' Fajance vases, designed by Nils Thorsson, each decorated in a buff ground with panels of birds or fish, printed mark and inscribed initials and numbered, 19 and 22cm high (2)
£100 - 150

Lot 547

An Italian pottery bowl, with a mushroom and raspberry glaze, signed 'Fantoni', 15.5cm diameter
£100 - 150

Lot 548

A Gustavsberg Argenta bowl, with a silvered fish to the inside of the bowl, and silvered rim, with a ribbed body, stamped marks in gold and inscribed '1107 II', 17.5cm diameter
£100 - 150

Lot 549

A Poole Pottery freeform bowl, with a design in yellow, purple and turquoise, printed and inscribed with maker's mark and 'PSV', 23.5cm wide
£100 - 150



549

Lot 550

A Whitefriars' pink-tinted bowl, with air bubble inclusions, 40.5cm diameter
£100 - 150



550



546



551



552



553

Lot 551

A Whitefriars' 'drunken bricklayer' glass vase, designed by Geoffrey Baxter, in orange, 21cm high
£150 - 200

Lot 552

A Whitefriars' orange glass 'TV' vase, designed by Geoffrey Baxter, 17.5cm high
£100 - 150

Lot 553

A Nuutajarvi Notsjo glass vase, designed by Gunnel Nyman (1909-1948), with controlled air bubble mesh over an amethyst centre cased in clear glass, *signed and dated '58'*, 25.5cm high
£200 - 400

Lot 554

An Italian contemporary clear blue and green glass figure, 63.5cm high
£100 - 150



554



555

Lot 555

A 'Virtu' cased glass bowl, c.2000, by Lestyn Davies for Blowzone, 21cm diameter
15cm high
£150 - 200

Lot 556

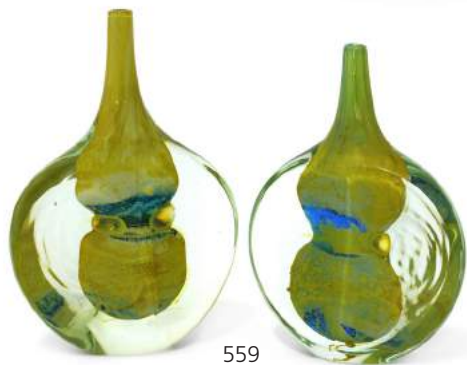
A Murano 'Caramello' glass vase for Salviati, 2008, designed by Luca Nichetto, of squat form with cut horizontal details, *inscribed 'Salviati 2008', with original sticker to the body and in original box*, 16.5cm high
25.5cm diameter
£150 - 200



556



557



559

Lot 559

Two Mdina fish glass vases, designed by Michael Harris, each with a facet cut front with green tinted glass and centred with yellow and blue, 17.5 and 19cm high (2)
£100 - 200

Lot 560

A Daum pâte de verre glass mirror, with a bevelled mirror plate and a shell moulded stand, signed to base, 33.5cm high
£200 - 300



560



558

Lot 557

*Pauline Solven (b.1943), 'Sunset Arch', a fused satin glass arch with mottled pastel colouration, engraved signature, dated 2001, 25.5cm wide
6.5cm deep
26cm high
£200 - 400

Lot 558

*Colin Reid (b.1953), a kilncast studio glass scent bottle, of circular section with polished sides and internal fracture-type detailing, the edges in a metal oxide blue textured finish, frosted glass stopper to shoulder, dated 2000 and signed to lower edge 'Colin Reid 2000 R903', 16.5cm wide
16cm high
£800 - 1,200



561

Lot 562

Frederick Hart (American, 1943-1999) RECLINING COUPLE Perspex, signed and numbered '235/395', 58cm high
£800 - 1,200



Lot 561

A Daum heavy glass bowl, with air bubble inclusions, etched 'Daum Nancy France', 23cm diameter, and a glass vase, with air bubbles and aventurine inclusions, etched 'Annabale...', 27cm high (2)
£150 - 250



562



563

Lot 563

A modernist sculpture,
bronze, cast mark 'E Godard Cire Perdue',
on a painted plinth,
26.5cm high
£100 - 150



564

Lot 564

*Mark Brazier-Jones (b.1956),
a pair of 'St James' chairs, 1995, with red
upholstered backs and seats,
80cm wide
63cm deep
80cm high (2)
£1,500 - 2,000



565

Lot 565

*Mark Brazier-Jones (b.1956),
a 'St James' coffee table, 1995, with a shaped
marble chip terrazzo top, raised on cast supports,
80cm square
40cm high
£500 - 700



566

Lot 566

*Mark Brazier-Jones (b.1956),
a set of six 'Fountains' wall lights, 1995, each with
a moulded glass shade, on a torch with laurels to
the side,
68cm high (6)
£1,000 - 1,500

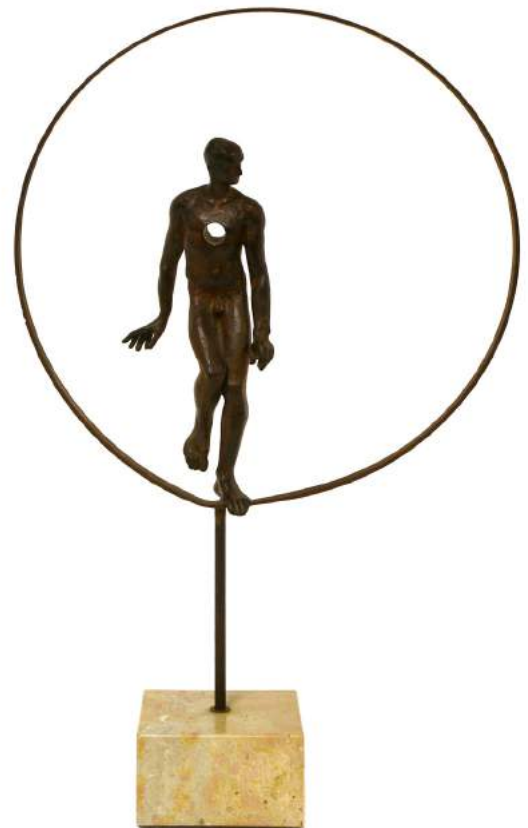
Lot 567

*Mark Brazier-Jones (b.1956),
1995, a bronze and steel 'Ting' lantern, a unique
one-off commission with blossom branch and bat
detail, bronze and steel, with handmade silk shade
by 'Sera of London', signed 'Mark Brazier-Jones',
with certificate of authenticity,
202cm high
£300 - 500

Provenance: Acquired directly from the artist in
2006.



567



568

Lot 568

*Lorenzo Quinn (Italian, b.1966),
'Crossing a Millennium', bronze and steel, signed
and numbered 22/25, on a square marble plinth,
80cm high
£2,000 - 3,000



569



570



571

Lot 569

A G-Plan teak nest of three tables, the rounded rectangular tops on openwork supports, 53cm wide 48cm deep 50cm high £120 - 180

Lot 570

A Barcelona chair, modern, after the original design by Mies van der Rohe, 75cm wide £150 - 200

Lot 571

A set of Vitsoe 606 wall shelves, designed by Dieter Rams, with fourteen shelves in two tiers, 135cm wide approximately 200cm high £300 - 500

Lot 572

An Artek 'Angel Wing' floor light, after a design by Alvar Aalto, the tiered shade, on a leather plinth, 175cm high £300 - 500

Lot 573

An Ingo Maurer Gaku table lamp, with a folded paper shade, 90cm high £200 - 300

Lot 574

A rattan lounge chair, designed by Monika Mulder for IKEA, 46cm wide 90cm deep 47cm high £150 - 200



572



573



574

Lot 575

A Poltrona Frau cream leather armchair, *labelled*, 73cm wide 69.5cm deep 73.5cm high seat 44cm high £200 - 400

Lot 576

An Italian glazed earthenware figural table lamp, by Manna of Torino, the torso-shaped body with glazed abstract designs, *inscribed to the base*, 78cm high £300 - 350

Lot 577

A contemporary Macassar ebony console table, with a leather top, 140cm wide 45cm deep 85cm high £400 - 600

Lot 578

A 'Cartoons' screen, designed by Luigi Baroli for Baleri Italia, with a corrugated cardboard panel and cast aluminium mounts, *with instructions*, 170cm high £150 - 200

Lot 579

A 'Chariot' chaise longue, designed by Paul Tuttle for Strässle in 1972, with a suede slung seat and headrest, 190cm wide 58cm deep 72cm high £1,500 - 2,000

Lot 580

*Michael Gillespie (1929-2012), a bronze sculpture, on a stone pebble plinth, 36.5cm wide 19.5cm high £150 - 200



575



576



578



577



579



580



581



582



583

Lot 581

*Willi Soukop RA (1907-1995), 'Tenderness', carved and painted wood, on a square wood plinth, labelled, 37cm high, together with an accompanying letter to the vendor (2)
£200 - 300

Provenance: Royal Academy Summer Exhibition, 1990, purchased by the vendor

Lot 582

Two Swedish Kroken lounge chairs, designed by Ake Fribytt, with a stained cantilever frame, and brown upholstery, one head support loose (2)
£200 - 400

Lot 583

'The Sex Pistols - The Great Rock n' Roll Swindle,' a poster, 102 x 74cm
£100 - 150

Lot 584

A pair of Murano glass handles, of rectangular form with aluminium mounts, 18cm wide 37.5cm high (2)
£100 - 150

Lot 585

A Barcelona chair, modern, after the original design by Mies van der Rohe, 76cm wide 80cm deep 85cm high
£250 - 350



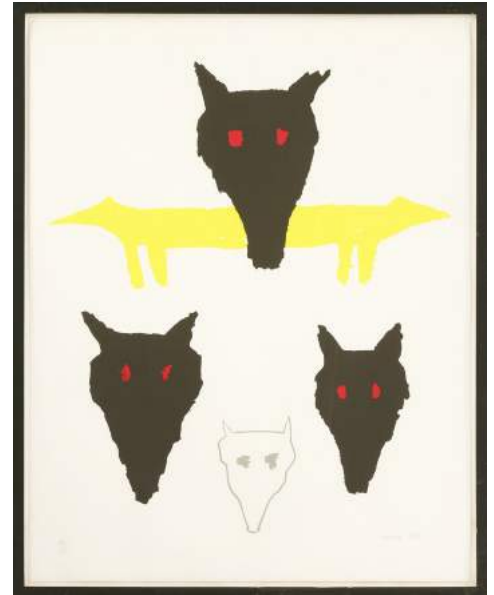
584



585



586



587

Lot 586

Christopher Makos (American, b.1948)
ANDY WARHOL IN DRAG
 Screenprint, c.1980, from an unlimited edition, image from the 'Altered Images' series, on wallpaper
 image 39 x 49cm, framed
 £200 - 300

Lot 587

Zadok Ben-David (Israeli, b.1949)
UNTITLED
 Five lithographs 1988-89, each limited editions, signed in pencil and numbered and dated
 74 x 53cm, framed (5)
 £200 - 400

Lot 590

***After Banksy (British, b.1974)**
TIME OUT NEW YORK
 POSTER
 Offset lithograph in colours, 2010, on satin paper, the full sheet printed to the edges
 sheet 40 x 29.5cm, unframed
 £80 - 120

Created for the American release of 'Exit Through the Gift Shop', directed by Banksy.



588

Lot 588

Barry McGee (American, b.1966)
THE HOLE
 Offset lithographic poster in colours, 2010, from an edition of 50, created for The Hole's POSTERMAT exhibition in conjunction with Levi's and The Hole Gallery, New York, on wove paper
 sheet 61 x 91.5cm, unframed
 £100 - 150

Lot 589

***After Banksy (b.1974)**
BANKSY VS BRISTOL MUSEUM
 Set of four offset lithographic posters printed in colours, 2009, official posters from the artist's Bristol show of the same year, each on satin paper, the full sheets printed to the edges
 each sheet 59 x 42cm, unframed (4)
 £200 - 300



589



590



591



592

Lot 591

Jonas Wood (American, b.1977)
GAGOSIAN NEW YORK POSTER
Offset lithographic poster, 2018, signed and dated in marker pen, on wove paper, with full margins, accompanied by original receipt
76.1 x 61cm, unframed
£250 - 350

Lot 592

Keith Haring (American, 1958-1990)
MONTREUX JAZZ FESTIVAL POSTER, PINK, YELLOW AND GREEN
Three screenprints in colours, 1983, printed by Serigraphie Uldry, Berne, on wove paper, the full sheets printed to the edges
each sheet 100.5 x 70cm, unframed (3)
£300 - 500

Lot 593

***Chris Levine (Canadian-British, b.1960)**
X MARKS THE SPOT 4
Screenprint in colours with glitter overlay, 2018, from the edition of 25, signed in pencil, published by Jealous Gallery, with blindstamp, on Satin Radiant White 410gsm paper, the full sheet
sheet 30 x 30cm, unframed
£300 - 500



593



594



597

Lot 594

***Chris Levine (Canadian-British, b.1960)**
X MARKS THE SPOT 7
Screenprint in colours with glitter overlay, 2018, from the edition of 25, signed in pencil, published by Jealous Gallery, with blindstamp, on Satin Radiant White 410gsm paper, the full sheet
sheet 30 x 30cm, unframed
£300 - 400

Lot 595

Maya Hayuk (American, b.1969)
CHEM TRAILS NYC
Giclée print in colours, 2014, signed, titled, dated and numbered 79/100 in pencil, on Somerset satin heritage wove paper, with full margins
sheet 35.5 x 61cm, unframed
£100 - 150



595



596

Lot 596

***Stik (British, b.1979)**
STANDING FIGURE (YELLOW)
Offset lithograph printed in colours, 2015, signed in black ink, on wove paper folded twice (as issued), with full margins; within the book 'Stik', signed in black ink, published by Century
sheet 75.7 x 23.9cm, unframed
book 26.7 x 22 x 2.5cm
£300 - 500

Lot 597

***Rourke Van Dal (British, b.1969)**
MONROE (GREY)
Screenprint in colours, 2016, signed and numbered 44/75 in pencil, on wove paper, with full margins
sheet 70 x 69.5cm, unframed
£120 - 180



598

Lot 598

A Lurashell armchair, with a light grey upholstered bucket seat, raised on teak supports
£150 - 250

Lot 599

Antony Gormley (b.1950), Coat Peg, two, and Richard Deacon (b.1949), metal sculpture, both for 'At Home with Art'; in partnership with Homebase, in original boxes (3)
£100 - 150



599

Lot 600

A Zanotta 'Greg' sofa, designed by EmaF Progetti, with grey upholstery, 205cm wide, 95cm deep, 69cm high, seat 40cm high approximately
£500 - 700

Lot 601

A Pierre Paulin '555' chair, designed for Artifort, in blue upholstery, maker's label to the underside
£300 - 500



601

Lot 602

A 'Top Pot Hard', plastic, designed by Ron Arad for Serralunga, moulded in red, 100cm high
£100 - 150

Lot 603

A contemporary mahogany, walnut and rosewood inlaid dining table, of rectangular form with rounded ends, centred with a mirrored panel, with leaf inlaid banding, raised on two pedestals, 350cm wide, 108cm deep, 79cm high
£800 - 1,200



602



603

Lot 604

A faux marble coffee table,
on a wrought iron stand,
122cm wide
71cm deep
46cm high
£150 - 250



604

Lot 605

A contemporary chaise,
with castors to one end,
160cm long
£200 - 300



605

Lot 606

A 'Round Rail' bed,
designed by Ron Arad, with Kee
Klamp joints and six strut horizontal
supports, with a 'One-Off' label,
136cm wide
196cm long
67.5cm high
£400 - 600



606



607 part lot



608

Lot 607

A Louis Poulsen PH 2/1 hanging light pendant,
designed by Poul Henningsen, with a blue reflector,
50cm diameter, and
another smaller light pendant,
in red (2)
£100 - 150

Lot 608

A Louis Poulsen PH5 hanging pendant lamp,
designed by Poul Henningsen, in blue,
48cm diameter
£100 - 150

Lot 609

A Danish oak veneered open bookcase,
with two rows of adjustable shelves, labelled 'Omman Jun
Model Nr 6',
120cm wide
29cm deep
144.5cm high
£150 - 200



609



612



613



611



610

Lot 610

A set of six laminated chairs, 1960s, the barrel backs with fret cut details, black leather seats and tubular frames (6)
£250 - 350

Lot 611

An Ercol light elm nest of tables, 65cm wide
44.5cm deep
40cm high
£200 - 300

Lot 612

A Louis Poulsen PH5 hanging pendant lamp, designed by Poul Henningsen, in white with a blue reflector, 48cm diameter
£100 - 150

Lot 613

A Louis Poulsen PH5 hanging pendant lamp, designed by Poul Henningsen, in white with a blue reflector, 48cm diameter
£100 - 150

Lot 614

A brass five-tier freestanding set of shelves, each tier with a smoked glass top, 80cm wide
32cm deep
151cm high
£200 - 300

Lot 615

A pair of oak lounge chairs, designed by Guillerme et Chambron, each with a beige upholstered back and seat, with spindle back supports, 68cm wide
90cm high
seat 46cm high (2)
£400 - 600



614



615





616

Lot 616 S

A rosewood desk,
designed by Gunni Omann, with three drawers, the top
drawers with trays, the reverse with a central cupboard,
flanked with a shelf,
156cm wide
79cm deep
72cm high
£600 - 800



617

Lot 617 S

A Danish rosewood settee,
in the manner of Arne Vodder, with green
upholstery
£1,000 - 1,500



618

Lot 618

'Collage',
a screenprint on rayon, designed by Eduardo
Paolozzi in 1953 for David Whitehead Ltd,
36 x 47cm, mounted and framed
£300 - 500



619



620

Lot 619

'Weald'
a screenprint on textured cotton, designed
by Alan Reynolds, 1959, for the Edinburgh
Weavers,
36 x 47cm, mounted and framed
£200 - 300

Lot 620

'Chiesa della Salute',
a screenprint on Sanderson fabric, designed by
John Piper in 1959 for Sanderson & Sons Ltd.,
29.5 x 42cm, mounted and framed
£200 - 300

Lot 621

A Jaeger-LeCoultre 'Atmos' moonphase mantel clock, with a white enamel chapter ring, with Roman numerals with subsidiary calendar moon phase, contained in a five-glass silvered metal case, 'CAL560', etched to the front of glass panel 'The Dorchester 75th Anniversary', serial number 718874, with original box, instruction manual and guarantee, 23cm high
£2,000 - 3,000

Lot 622

A 'Daffodil' standard lamp, 170cm approximately high
£200 - 300

Lot 623 §

A 'Scandia' teak lounge chair and ottoman, designed by Hans Brattrud for Georg Eknes, on a revolving stand, labelled to the chair 'Georg Eknes Metallinoustri Ejknsvag Bergen', with recovered cushions in Sanderson linen (2)
£2,000 - 3,000

Lot 624 §

A 'Scandia' rosewood lounge chair, c.1970, designed by Hans Brattrud for Georg Eknes, on a revolving stand, labelled 'Georg Eknes Metallinoustri Ejknsvag Bergen', with recovered cushions in Sanderson linen
£3,000 - 5,000



621



622



623



624



625

Lot 625

Five 'Mosquito' model 3105 chairs, designed by Arne Jacobsen for Fritz Hansen (5)
£350 - 450

Lot 626 §

A rosewood desk, designed by Jorge Zalsupin for L'Atelier, with drawers either side, with horizontal leather handles, 190cm wide
94cm deep
75cm high
£1,200 - 1,500

Lot 627 §

A pair of rosewood side cabinets, designed by Jorge Zalsupin for L'Atelier, each with four drawers and a single cupboard, 100cm wide
40cm deep
72cm high (2)
£1,200 - 1,500

Lot 628

A Model 97 'Boomerang' rocking chair, designed by Søren Georg Jensen for Tønder Møbelværk, 63cm wide
82cm deep
77cm high
£200 - 300



626



627



629

Lot 629

Two hanging light pendants, in orange and white, 47cm diameter (2)
£100 - 150

§ FURNITURE MADE OF BRAZILIAN ROSEWOOD (DALBERGIA NEGRA)

To comply with CITES Regulations on post-1947 furniture made of Brazilian Rosewood, all post-war rosewood furniture items have Article 10 certificates.

If you are purchasing rosewood furniture for commercial purposes and not solely for your own use, CITES regulations require you to obtain your own certificate. You would need to contact the Animal Health and Veterinary Laboratories Agency ('AHVLA') and, as part of the process of obtaining your document, it is a requirement that you have seen sight of the Sworders' certificate or are aware of its reference number.

It is therefore the responsibility of commercial buyers to ensure that they obtain a copy of the appropriate certificate, or the certificate reference number, after purchase from Sworders Fine Art Auctioneers.

For confirmation of the certificate number, please refer to our website (www.sworder.co.uk).



628



630



631



632

Lot 630

Two hanging light pendants, the first in red, the second white and chrome, 47.5cm diameter (2)
£100 - 150

Lot 631

Two Louis Poulsen PH 2/1 hanging pendant lights, designed by Poul Henningsen, 38cm diameter (2)
£150 - 200



633



634



635

Lot 632

Two Louis Poulsen PH5 chrome hanging light pendants, designed by Poul Henningsen, one with a mauve interior, the other white, 39 and 48cm (2)
£150 - 200

Lot 633

'Spring' a screenprint on cotton, designed by Pablo Picasso in 1955 for D B Fuller, 24 x 40.5cm, mounted and framed
£100 - 200

Lot 634

'Taliesin - Design 102', a screenprint on linen, designed by Frank Lloyd-Wright in 1954, for Dan Schumacher, 36.5 x 26.5cm, mounted and framed
£100 - 200

Lot 635

*Paolo Serra (Italian, b.1946)
UNTITLED
Oil on canvas
183 x 183cm, unframed
£300 - 500



636



636 sideboard



637

Lot 636

A teak dining suite, comprising:
a dining table, with an extra folding leaf 151cm wide, 212cm extended
six dining chairs, (2+4), and
a sideboard, with a central tambour cupboard, enclosing shelves and three trays, flanked by eight drawers, 235cm wide 45.5cm deep 82cm high (8)
£300 - 500

Lot 637

A teak wall unit, comprising five shelves, three with sides and backs, two drawers and cupboard units, a cupboard with sliding drawers, a cupboard with glass drawers, a drop-down cupboard, and four uprights, 203cm high (14)
£250 - 350

GLOSSARY OF PICTURE CATALOGUING TERMS

A work catalogued with the forename(s) and surname of a recognised destination of an artist is or is probably a work by the artist, eg. David Cox. Nevertheless, intending buyers are reminded that while a full designation is our highest category or authenticity, no unqualified statement as to the authorship is made or intended. A full cataloguing does not necessarily imply a full warranty.

Attributed to David Cox

in our opinion a work of the period of the artist which may be in whole or in part the work of the artist.

Circle of David Cox

in our opinion a work from the period of the artist and showing his influence.

Follower of David Cox

in our opinion a work executed in the style of David Cox

After David Cox

in our opinion a copy of any date after a work by the artist

Signed/inscribed/dated

in our opinion the work has been signed/inscribed/dated by the artist

Bears/with signature, inscription, date

in our opinion the signature/inscription/date are not by the hand of the named artist.

The addition of a question mark (?) after any of the above cataloguing terms indicates an element of doubt.

A work catalogued as 'School' accompanied by the name of a place or country and a date means that in our opinion the work was executed at that time and in the location, eg. South Netherlands School, circa 1750.

All references to signatures, inscriptions and dates refer to the present state of the work, ie. as at the time of inspection for the purpose of cataloguing.

Condition reports are not included in the descriptions.

ARTIST'S RESALE RIGHT (ARR)

What is Artist's Resale Right?

Following a European Directive in 2006, the Artist's Resale Right entitles creators of original works of art to a royalty each time their work is resold, with the involvement of an auction house, for 1,000 Euros or more.

This right covers sales of work by living artists and also the beneficiaries and heirs of artists deceased within the last 70 years of the sale.

How are resale royalties calculated?

The artist's royalty depends on the hammer price (sale price without any VAT or Buyer's Premium). The higher the sale price of the artwork, the lower the overall royalty rate.

The royalty is worked out according to a sliding scale from 4% to 0.25%.

| Hammer Price | Royalty |
|------------------------------|---------|
| From 0 to €50,000 | 4% |
| From €50,000.01 to €200,000 | 3% |
| From €200,000.01 to €350,000 | 1% |
| From €350,000.01 to €500,000 | 0.5% |
| Exceeding €500,000 | 0.25% |

What is the qualifying threshold?

An artwork must sell for more than €1,000 to qualify for a royalty. The law defines the price threshold in Euros and, because the exchange rate between the two currencies changes daily, the equivalent in Pounds Sterling must be worked out according to the exchange rate on the date the artwork was sold.

What nationality must an artist be to qualify?

The Artist's Resale Right applies to the sale of artworks in the European Economic Area (EEA). The following countries are in the EEA:

Austria, Belgium, Bulgaria, Cyprus, Czech Republic, Denmark, Estonia, Finland, France, Germany, Greece, Hungary, Iceland, Ireland, Italy, Latvia, Liechtenstein, Lithuania, Luxembourg, Malta, Netherlands, Norway, Poland, Portugal, Romania, Slovak Republic, Slovenia, Spain, Sweden, United Kingdom.

Artists who are nationals of these countries are therefore generally eligible to receive resale royalties. The nationality criteria only applies to the artist and not to the beneficiaries or heirs.

Are all sales of artwork covered?

The Artist's Resale Right does not apply to all sales of artworks. A royalty is only due if the following conditions are met:

- the artwork is a copyright protected work of graphic or plastic art;
- it is sold for more than €1000;
- it is sold in the secondary market with the involvement of an art market professional (e.g. auction house);
- and it is sold in the UK or another country in the European Economic Area (EEA).

This royalty, where applicable, will be charged to the purchaser. It is exempt of VAT.

TERMS AND CONDITIONS

INFORMATION FOR BUYERS

Introduction

The following notes are intended to assist bidders and buyers, particularly those that are inexperienced or new to our salerooms. All of our auctions are governed by our Conditions of Business incorporating the Terms of Consignment (primarily applicable to sellers), the Terms of Sale (primarily applicable to bidders and buyers) and any notices that are displayed in our salerooms or announced by the auctioneer at the auction. Our Conditions of Business are available for inspection at our salerooms and the Terms of Sale are printed in the back of our auction catalogues. Our staff will be happy to help you if there is anything in our Conditions of Business that you do not fully understand.

Please make sure that you read our Terms of Sale set out in this catalogue or on our website carefully before bidding in the auction. If your bid is successful, you will be obliged to comply with our Terms of Sale.

Methods of Payment

Lots must be paid for before they are collected. For those attending the auction we ask that lots are paid for on the day of the sale. Methods by which we accept payment are detailed on our web site, including online payment upon receipt of your invoice, and these should be paid by 5pm on the Friday following the sale. We accept cash to an upper limit of 10,000 euros equivalent. We accept credit card payments to an upper limit of £5,000. Usually any cheques will need to be cleared before you can take the goods away.

Collection and storage

All lots should be paid for and collected by 5pm on the Friday following the sale. Commission bidders should check the success of their bids and arrange payment and collection within this time. Please note what the Terms of Sale say about collection and storage. Items not removed by 5pm on Friday may be removed at the purchaser's expense and storage charges of £10 as an administration fee and £2 per lot per day may be charged (plus vat). Please note that we will apply these charges strictly to Furniture purchased in our Homes and Interiors Sales.

Dispatch

We are rarely able to pack and dispatch purchases. A choice of shippers is detailed on our web site.

Agency

As auctioneers we usually act on behalf of the seller whose identity, for reasons of confidentiality, is not normally disclosed. If you buy at auction your contract for the goods is with the seller, not with us as auctioneer.

Estimates

Estimates are designed to help you gauge what sort of sum might be involved for the purchase of a particular lot. Estimates may change and should not be thought of as the sale price. The lower estimate may represent the reserve price (the minimum price for which a lot may be sold) and will not be below the reserve price. Estimates do not include the buyer's premium or VAT (where chargeable). Estimates are prepared some time before the auction and may be altered by a saleroom notice or announcement by the auctioneer before the auction of the lot. They are not definitive.

Buyer's Premium

The Terms of Sale oblige you to pay a buyer's premium at 23% on the hammer price of each lot purchased, except for our Fine Wine and Port auctions when it is 15%. In addition, VAT is charged on these premiums (see below).

VAT

Items in our catalogue may be marked with a dagger † or double dagger ‡, which indicates that VAT is payable by the buyer on the hammer price and the buyer's premium at either the standard rate (currently 20%) or a reduced rate (currently 5%), depending upon the legal requirements relating to that lot.

Lots which do not have either of the above symbols have no VAT payable on the hammer price. This is because such lots are sold using the Auctioneers' Margin Scheme. The VAT included within the premium is not recoverable as input tax.

Inspection of goods by the buyer

As we act on behalf of the seller, we are dependent on information provided by the seller about their goods. We may inspect lots and will act reasonably in taking a general view about them. However, we are normally unable to carry out detailed examinations of lots to check their condition in the way a buyer would do. You will have ample opportunity to inspect the goods. You must inspect and investigate lots that you might wish to bid for. **Please note carefully the exclusion of liability for the condition of lots set out in the Terms of Sale at clause 12.4.**

Condition Reports

We may be able to assist buyers unable to view by emailing a condition report, but these are based solely on our own opinion and are for guidance only and no responsibility is accepted for their accuracy. Intending buyers are strongly encouraged to view. Condition reports cannot be prepared on the day of the sale.

Electrical goods

These are sold as 'antiques' only. If you buy electrical goods for use you must ask a qualified electrician to check them for compliance with safety regulations before you use them.

Export of goods

If you intend to export goods you must find out:

- whether an export licence is needed; and
- if there is a prohibition on importing goods of that character e.g. because the goods contain prohibited materials such as ivory.

Bidding

Bidders will be required to register with us before the auction starts. We reserve the right to impose a deadline prior to the auction by which you must register or by which we must receive a commission bid. If you wish to bid on high value lots this deadline may be several days before the auction in order to allow us sufficient time to carry out the necessary checks. Lots will be invoiced to the name and address on the registration form. You will need to provide us with proof of your identity in a form acceptable to us and such other information as we may require. Please enquire in advance about our arrangements for telephone or online bidding. Please note that we may refuse to register you if you do not provide us with all the information and documentation that we ask for or at our discretion.

Commission bidding

You may leave commission bids with us indicating the maximum amount to be bid against a lot (excluding the buyers' premium and/or any applicable VAT). We will execute commission bids as cheaply as possible having regard to the reserve (if any) and competing bids. If two buyers submit identical commission bids we may prefer the first bid received (where this can be reasonably ascertained). We recommend leaving commission bids online via our website, though please contact us about leaving bids by telephone or fax/email. All absentee bids should be received at least 30 minutes before the auction commences; we cannot guarantee to execute commission bids received after this time.

Telephone Bidding

If you are unable to come to the auction it may be possible to bid on the telephone for higher value lots. Please note that this service is for lots with an estimate of £500 or more. The number of lines is limited so we would urge serious telephone bidding only and ask that you be prepared to bid over the top estimate. It is advisable to leave a maximum covering bid in case we are not able to contact you by telephone. All lines must be booked and confirmed in writing before the day of the auction and preferably some time in advance. Telephone bidding involves many variables and whilst we take every care to ensure the smooth operation of this service, we cannot be held liable if your bids are missed for any reason.

Online Bidding

Any lots purchased via a live online bidding service will be subject to an additional commission charge on the hammer price payable by the bidder, in accordance with rates specified by the online service. From 1 November 2018, these charges will be charged at 3% plus VAT while bidding via Sworders website. If bidding through the-saleroom.com this will be charged at 4.95% plus VAT. Both charges will be payable to us on top of the hammer price and our buyer's commission.

IMPORTANT NOTICES

Removal of lots

ALL lots are to be removed from the premises by **5.00pm at the latest on the Friday following each sale**. Sworders retain the right to remove lots remaining after this time into safe storage, for which a charge will be made.

Electrical Goods

All electrical goods offered in this sale have either been tested and certified safe or unsafe by an appropriately qualified electrician. All electrical goods certified safe must be re-commissioned by an appropriately qualified electrician and we recommend those certified safe are similarly re-commissioned.

Post 1950 Upholstered Furniture

All items of furniture included in this sale are offered for sale as works of art. The items may not comply with the Furniture and Furnishings (Fire) Safety Regulations 1988 and for this reason, they should not be used in a private dwelling.

Furniture made of Brazilian Rosewood (Dalbergia Negra)

To comply with CITES Regulations on Post-1947 furniture made of Brazilian Rosewood, all post-war rosewood furniture items have Article 10 certificates.

If you are purchasing rosewood furniture for commercial purposes and not solely for your own use, CITES regulations require you to obtain your own certificate. You would need to contact the Animal Health and Veterinary Laboratories Agency (AHVLA) and, as part of the process of obtaining your document, it is a requirement that you have seen sight of the Sworders' certificate or are aware of its reference number.

It is therefore the responsibility of commercial buyers to ensure that they obtain a copy of the appropriate certificate, or the certificate reference number, after purchase from Sworders Fine Art Auctioneers. Items are marked with this sign §.

TERMS OF SALE

Both the sale of goods at our auctions and your relationship with us are governed by the Terms of Consignment (primarily applicable to sellers) the Terms of Sale (primarily applicable to bidders and buyers) and any notices displayed in the saleroom or announced by us at the auction (collectively, the 'Conditions of Business'). The Terms of Consignment and Terms of Sale are available at our saleroom on request.

Please read these Terms of Sale carefully. Please note that if you register to bid and/or bid at auction this signifies that you agree to and will comply with these Terms of Sale.

Please note that these Terms of Sale relate to auctions held at our premises only. We have separate terms for online only auctions.

1. Definitions and interpretation

1.1 To make these Terms of Consignment easier to read, we have given the following words a specific meaning:

| | |
|----------------------------------|--|
| 'Auctioneer' | means GES & Sons Ltd trading as Sworders Fine Art Auctioneers, a company registered in England and Wales with registration number 6858916 and whose registered office is located at Cambridge Road, Stansted Mountfitchet, Essex CM24 8GE or its authorised auctioneer, as appropriate; |
| 'Bidder' | means a person who places a bid for Goods at our auction; |
| 'Buyer' | means the person who makes the highest bid for the Goods accepted by the Auctioneer; |
| 'Commission' | means the commission that we charge you on the sale of the Goods as set out in Clause 5 below; |
| 'Consumer' | means an individual acting for purposes which are wholly or mainly outside that individual's trade, business, craft or profession; |
| 'Consumer Contracts Regulations' | means the Consumer Contracts (Information, Cancellation and Additional Charges) Regulations 2013; |
| 'Deliberate Forgery' | means: (a) an imitation made with the intention of deceiving as to authorship, origin, date, age, period, culture or source; (b) which is described in the catalogue as being the work of a particular creator without qualification; and (c) which at the date of the auction had a value materially less than it would have had if it had been as described; |
| 'FCA' | means the Financial Conduct Authority; |
| 'Goods' | means the goods that you consign to us for sale at our auction; |
| 'Hammer Price' | means the level of the highest bid for the Goods accepted by the Auctioneer; |
| 'Premium' | means the premium charged to the Buyer on the sale of the Goods in accordance with the Terms of Sale; |
| 'Price' | means the total of the Hammer Price, Premium and any applicable VAT; |
| 'Proceeds' | means the Price less the Commission, the Premium, any expenses incurred to your account and any applicable VAT; |
| 'Reserve' | means the minimum price at which the Goods may be sold; |
| 'Seller' | means the owner of the Goods and any agent who consigns the Goods for sale on the owner's behalf (if applicable); |
| 'Terms of Consignment' | means these terms of consignment; |
| 'Terms of Sale' | means the terms of sale for bidders or buyers at our auctions; |
| 'Trader' | means a Seller who is acting for purposes relating to that Seller's trade, business, craft or profession, whether acting personally or through another person acting in the trader's name or on the trader's behalf (such as an agent and/or the Auctioneer); |
| 'VAT' | means any value added tax or equivalent sales tax; and |
| 'Website' | means our website available at www.sworders.co.uk . |

In these Terms of Sale the words 'you', 'yours', etc. refer to you as the Buyer. The words 'we', 'us', etc. refer to the Auctioneer. Any reference to a 'Clause' is to a clause of these Terms of Sale unless stated otherwise.

2. Information that we are required to give to Consumers

2.1 A description of the main characteristics of each Lot as contained in the auction catalogue.

2.2 Our name, address and contact details as set out herein, in our auction catalogues and/or on our Website.

2.3 The price of the Goods and arrangements for payment as described in Clauses 4, 5, 7 and 8.

2.4 The arrangements for collection of the Goods as set out in Clauses 8 and 9.

2.5 Your right to return a Lot and receive a refund if the Lot is a Deliberate Forgery as set out in Clause 13.

2.6 We and Trader Sellers have a legal duty to supply any Lots to you in accordance with these Terms of Sale.

2.7 If you have any complaints, please send them to us directly at the address set out on our Website.

3. Bidding procedures and the Buyer

3.1 You must register your details with us before bidding and provide us with any requested proof of identity and billing information, in a form acceptable to us. You must also satisfy any security arrangements we have in place before entering the auction room to view or bid.

3.2 We strongly recommend that you attend the auction in person. You are responsible for your decision to bid for a particular Lot. If you bid on a lot, including by telephone and online bidding, or by placing a commission bid, we assume that you have carefully inspected the Lot and satisfied yourself regarding its condition.

3.6 We may bid on Lots on behalf of the Seller up to one bid below the Reserve.

3.7 We may refuse to accept any bid if it is reasonable for us to do so.

3.8 Bidding increments will be at our sole discretion (but will be in line with standard auction practice).

4. The purchase price

As Buyer, you will pay:

- the Hammer Price;
- a premium of 23% plus VAT of the Hammer Price or 15% plus VAT for our Fine Wine and Port Auction;
- any artist's resale right royalty payable on the sale of the Lot; and
- any VAT due.

5. VAT

5.1 You shall be liable for the payment of any VAT applicable on the Hammer Price and premium due for a Lot. Please see the symbols used in the auction catalogue for that Lot and the 'Information for Buyers' in our auction catalogue for further information.

5.2 We will charge VAT at the current rate at the date of the auction.

6. The contract between you and the Seller

6.1 The contract for the purchase of the Lot between you and the Seller will be formed after the hammer falls when the highest bid for the Goods at the auction is written into the Auction book by the Auctioneer.

6.2 You may directly enforce any terms in the Terms of Consignment against a Seller to the extent that you suffer damages and/or loss as a result of the Seller's breach of the Terms of Consignment.

6.3 If you breach these Terms of Sale, you may be responsible for damages and/or losses suffered by a Seller or us. If we are contacted by a Seller who wishes to bring a claim against you, we may in our discretion provide the Seller with information or assistance in relation to that claim.

6.4 We normally act as an agent only and will not have any responsibility for default by you or the Seller (unless we are the Seller of the Lot).

7. Payment

7.1 Immediately following your successful bid on a Lot you will:

7.1.1 give to us, if not already provided to our satisfaction, proof of identity in a form acceptable to us (and any other information that we require in order to comply with our anti-money laundering obligations); and

7.1.2 pay to us the Total Amount Due in any way that we agree to accept payment. Note there is an upper limit of 10,000 euros equivalent for payments in cash.

7.2 If you owe us any money, we may use any payment made by you to repay these debts.

8. Title and collection of purchases

8.1 Once you have paid us in full the Total Amount Due for any Lot, ownership of that Lot will transfer to you. You may not claim or collect a Lot until you have paid for it.

8.2 You will (at your own expense) collect any Lots that you have purchased and paid for not later than 5pm on the Friday following the auction.

8.3 If you do not collect the Lot within this time period, you will be responsible for any reasonable removal and storage charges in relation to that Lot.

8.4 Risk of loss or damage to the Lot will pass to you when you (or your agents) take physical possession of the Lot.

8.5 If you do not collect the Lot that you have paid for within thirty days after the auction, we may sell the Lot. We will pay the proceeds of any such sale to you, but will deduct any storage charges or other sums that we have incurred in the storage and sale of the Lot. We reserve the right to charge you a selling commission at our standard rates on any such resale of the Lot.

9. Remedies for non-payment or failure to collect purchases

9.1 Please do not bid on a Lot if you do not intend to buy it. If your bid is successful, these Terms of Sale will apply to you.

This means that you will have to carry out your obligations set out in these Terms of Sale. If you do not comply with these Terms of Sale we may (acting on behalf of the Seller and ourselves) pursue one or more of the following measures:

9.1.1 take action against you for damages for breach of contract;

9.1.2 reverse the sale of the Lot to you and/or any other Lots sold by us to you;

9.1.3 resell the Lot by auction or private treaty (in which case you will have to pay any difference between the price you should have paid for the Lot and the price we sell it for as well as the charges outlined in Clause 8.5). Please note that if we sell the Lot for a higher amount than your winning bid, the extra money will belong to the Seller;

9.1.4 remove, store and insure the Lot at your expense;

9.1.5 if you do not pay us within **five business days** of your successful bid, we may charge interest at a rate not exceeding 1.5% per month on the total amount due;

9.1.6 keep that Lot or any other Lot sold to you until you pay the Total Amount Due;

9.1.7 reject or ignore bids from you or your agent at future auctions or impose conditions before we accept bids from you; and/or

9.1.8 if we sell any Lots for you, use the money made on these Lots to repay any amount you owe us.

9.2 We will act reasonably when exercising our rights under Clause 9.1. We will contact you before exercising these rights and try to work with you to correct any non-compliance by you with these Terms of Sale.

10. Health and safety

Although we take reasonable precautions regarding health and safety, you are on our premises at your own risk. Please note the lay-out of the premises and security arrangements. Neither we nor our employees or agents are responsible for the safety of you or your property when you visit our premises, unless you suffer any injury to your person or damage to your property as a result of our, our employees' or our agents' negligence.

11. Warranties

11.1 The Seller warrants to us and to you that:

11.1.1 the Seller is the true owner of the Lot for sale or is authorised by the true owner to offer and sell the lot at auction;

11.1.2 the Seller is able to transfer good and marketable title to the Lot to you free from any third party rights or claims; and

11.1.3 as far as the Seller is aware, the main characteristics of the Lot set out in the auction catalogue (as amended by any notice displayed in the saleroom or announced by the Auctioneer at the auction) are correct.

11.2 If, after you have placed a successful bid and paid for a Lot, any of the warranties above are found not to be true, please notify us in writing. Neither we nor the Seller will be liable to pay you any sums over and above the Total Amount Due and we will not be responsible for any inaccuracies in the information provided by the Seller except as set out below.

11.3 Please note that many of the Lots that you may bid on at our auction are second-hand.

11.4 If a Lot is not second-hand and you purchase the Lot as a Consumer from a Seller that is a Trader, a number of additional terms may be implied by law in addition to the Seller's warranties set out at Clause 11.1 (in particular under the Consumer Rights Act 2015). These Terms of Sale do not seek to exclude your rights under law as they relate to the sale of these Lots.

11.5 Save as expressly set out above, all other warranties, conditions or other terms which might have effect between the Seller and you, or us and you, or be implied or incorporated by statute, common law or otherwise are excluded.

12. Descriptions and condition

12.1 Our descriptions of the Lot will be based on: (a) information provided to us by the Seller of the Lot (for which we are not liable); and (ii) our opinion (although it is likely that we will not be able to carry out a detailed inspection of each Lot).

12.2 We will give you a number of opportunities to view and inspect the Lots before the auction. You (and any independent consultants acting on your behalf) must satisfy yourself about the accuracy of any description of a Lot. We shall not be responsible for any failure by you or your consultants to properly inspect a Lot.

12.3 Representations or statements by us as to authorship, genuineness, origin, date, age, provenance, condition or estimated selling price involve matters of opinion. We undertake that any such opinion will be honestly and reasonably held and accept liability for opinions given negligently or fraudulently.

12.4 Please note that Lots (in particular second-hand Lots) are unlikely to be in perfect condition. Lots are sold 'as is' (i.e. as you see them at the time of the auction). Neither we nor the Seller accept any liability for the condition of second-hand Lots or for any condition issues affecting a Lot if such issues are included in the description of a Lot in the auction catalogue (or in any saleroom notice) and/ or which the inspection of a Lot by the Buyer ought to have revealed.

13. Deliberate Forgeries

13.1 You may return any Lot which is found to be a Deliberate Forgery to us within 30 days of the auction provided that you return the Lot to us in the same condition as when it was released to you, accompanied by a written statement identifying the Lot from the relevant catalogue description and a written statement of defects.

13.2 If we are reasonably satisfied that the Lot is a Deliberate Forgery we will refund the money paid by you for the Lot (including any Premium and applicable VAT) provided that if:

13.2.1 the catalogue description reflected the accepted view of experts as at the date of the auction; or

13.2.2 you personally are not able to transfer good and marketable title in the Lot to us, you will have no right to a refund under this Clause 13.2.

13.3 If you have sold the Lot to another person, we will only be liable to refund the price that you paid for the Lot. We will not be responsible for repaying any additional money you may have made from selling the Lot.

13.4 Your right to return a Lot that is a Deliberate Forgery does not affect your legal rights and is in addition to any other right or remedy provided by law or by these Terms of Sale.

14. Our liability to you

14.1 We will not be liable for any loss of opportunity or disappointment suffered as a result of participating in our auction.

14.2 In addition to the above, neither we nor the Seller shall be responsible to you and you shall not be responsible to the Seller or us for any other loss or damage that any of us suffer that is not a foreseeable result of any of us not complying with the Conditions of Business. Loss or damage is foreseeable if it is obvious that it will happen or if at the time of the sale of the Lot, we, you and the Seller knew it might happen.

14.3 Subject to Clause 14.4, if we are found to be liable to you for any reason (including, amongst others, if we are found to be negligent, in breach of contract or to have made a misrepresentation), our liability will be limited to the total purchase price paid by you to us for any Lot.

14.4 Notwithstanding the above, nothing in these Terms of Sale shall limit our liability (or that of our employees or agents) for:

14.4.1 death or personal injury resulting from negligence (as defined in the Unfair Contract Terms Act 1977);

14.4.2 fraudulent misrepresentation; or

14.4.3 any liability which cannot be excluded by law.

15. Notices

15.1 All notices between you and us regarding these Terms of Sale must be in writing and signed by or on behalf of the party giving it.

15.2 Any notice referred in Clause 15.1 may be given:

15.2.1 by delivering it by hand;

15.2.2 by first class pre-paid post or Recorded Delivery; or

15.2.3 by email, provided that receipt of the email is acknowledged by the recipient.

15.3 Notices must be sent:

15.3.1 by hand or registered post:

a. to us, at our address set out in these Terms of Sale or at our registered office address appearing on our Website; and

b. to you, at the last postal address that you have given to us as your contact address in writing; or

15.3.2 by email:

a. to us, by sending the notice to the following email address: auctions@sworder.co.uk

b. to you, by sending the notice to any email address that you have given to us as your contact email address in writing.

15.4 Notices will be deemed to have been received:

15.4.1 if delivered by hand, on the day of delivery;

15.4.2 if sent by first class pre-paid post or Recorded Delivery, two business days after posting, exclusive of the day of posting; or

15.4.3 if sent by email, at the time of transmission unless sent after 17.00 in the place of receipt in which case they will be deemed to have been received on the next business day in the place of receipt (provided that receipt is acknowledged by the recipient).

15.5 Any notice or communication given under these Terms of Sale will not be validly given if sent by fax, email, any form of messaging via social media or text message.

16. Data Protection

We will hold and process any personal data in relation to you in accordance with our current privacy policy, a copy of which is available on our website.

17. General

17.1 We may, acting reasonably, refuse admission to our premises or attendance at our auctions by any person.

17.2 We act as an agent for our Sellers. The rights we have to claim against you for breach of these Terms of Sale may be used by either us, our employees or agents, or the Seller, its employees or agents, as appropriate. Other than as set out in this Clause, these Terms of Sale are between you and us and no other person will have any rights to enforce any of these Terms of Sale.

17.3 We may use special terms in the catalogue descriptions of particular Lots. You must read these terms carefully along with any glossary provided in our auction catalogues.

17.4 Each of the clauses of these Terms of Sale operates separately. If any court or relevant authority decides that any of them are unlawful, the remaining clauses will remain in full force and effect.

17.5 We may change these Terms of Sale from time to time, without notice to you. Please read these Terms of Sale carefully, as they may be different from the last time you read them.

17.6 Except as otherwise stated in these Terms of Sale, each of our rights and remedies are: (a) are in addition to and not exclusive of any other rights or remedies under these Terms of Sale or general law; and (b) may be waived only in writing and specifically. Delay in exercising or non-exercise of any right under these Terms of Sale is not a waiver of that or any other right. Partial exercise of any right under these Terms of Sale will not preclude any further or other exercise of that right or any other right under these Terms of Sale. Waiver of a breach of any term of these Terms of Sale will not operate as a waiver of breach of any other term or any subsequent breach of that term.

17.7 These Terms of Sale and any dispute or claim arising out of or in connection with them (including any non-contractual claims or disputes) shall be governed by and construed in accordance with the laws of England and the parties irrevocably submit to the exclusive jurisdiction of the English courts.

These terms are based upon the recommended terms of sale by the Society of Fine Art Auctioneers and Valuers







www.sworder.co.uk

The Stansted Auction Rooms
Cambridge Road
Stansted Mountfitchet
Essex CM24 8GE
Tel 01279 817778
Fax 01279 817779
Email auctions@sworder.co.uk

Hertford Office
42 St Andrew Street
Hertford SG14 1JA
Tel 01992 583508
Fax 01992 586074
Email hertfordoffice@sworder.co.uk

London Office
15 Cecil Court
London
WC2N 4EZ
Tel 0203 971 2500
Email london@sworder.co.uk

Kent Office
Tel 01732 757675
Email kent@sworder.co.uk

